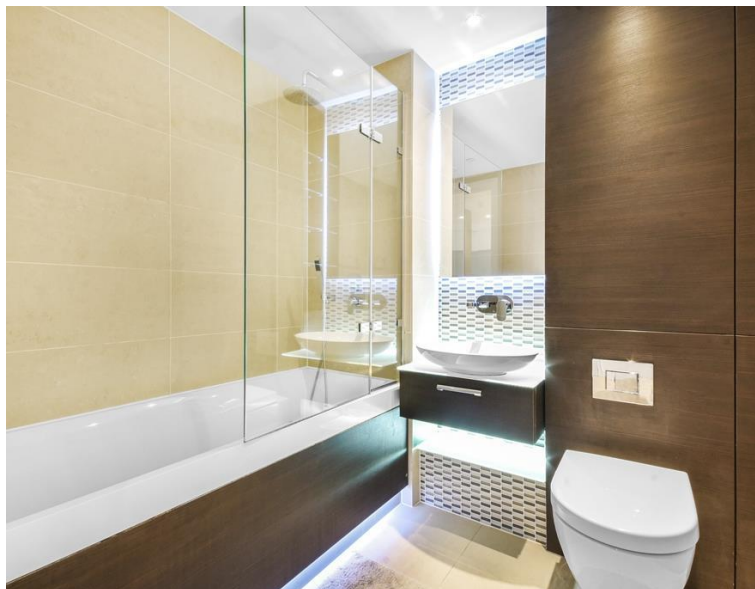




## Commercial Street, London E1

Price £475 per week - Furnished









# Description

A luxury studio apartment in the sought after Cityscape development.

This stunning studio apartment is situated on the 6th floor and offers approximately 419 sq ft of living space. The apartment comprises a spacious living / sleeping area with access onto a generous sized, south facing balcony, large fitted wardrobes, contemporary fully fitted kitchen, contemporary bathroom with porcelain and glass tiling, wooden flooring and excellent storage space. The apartment benefits from floor to ceiling windows maximising natural light and views.

The development is a short walk from the City of London. Located in Zone 1 and approximately 0.1 mile from Aldgate East station. Residents also benefit from 24 hour concierge service and on site gym.

Rent is payable on a monthly basis and you may be required to pay more than a month's rent in advance, depending on your circumstances. You will be required to pay a 1 week holding deposit following a successful offer. Utility bills, council tax, telephone line and broadband are not included in the rent. As well as paying the rent, you may also be required to make some additional permitted payments. If your tenancy does not q

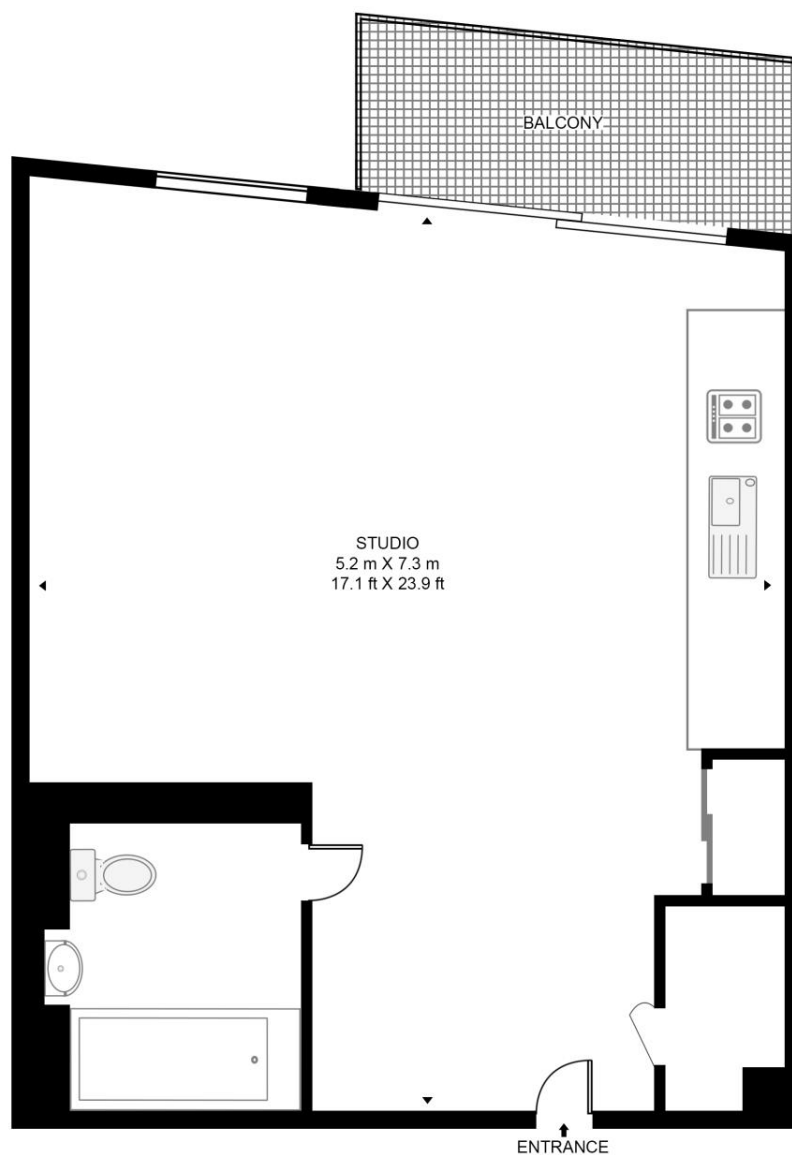
- Studio
- 1 Bathroom
- 6th floor
- Balcony
- On site gym
- 24 Hour concierge
- 0.1 mile from Aldgate East station
- Approx. 419 sq ft (38.9 sq m)
- Furnished
- EPC: B

# Floorplan

419 sq ft | 39 sq m

## KENSINGTON APARTMENTS

APPROXIMATE GROSS INTERNAL FLOOR AREA 419 SQ.FT (38.9 SQ.M)



SIXTH FLOOR



This floor plan has been defined by the RICS Code of Measurement. This floor plan and all others are for approximate representative purposes only and upon usage is agreed to as such by the client.  
WWW: [hdvirtualart.com](http://hdvirtualart.com) | TEL: 0203.974.1567 | EMAIL: [info@hdvirtualart.com](mailto:info@hdvirtualart.com)

City  
25 Walbrook The Walbrook  
Building,  
London EC4N 8AF  
+4420 7337 4000

*Urban living, your way.*

[jll.co.uk/residential](http://jll.co.uk/residential)

© 2019 Jones Lang LaSalle IP, Inc. All rights reserved. All information contained herein is from sources deemed reliable; however, no representation or warranty is made to the accuracy thereof.

