

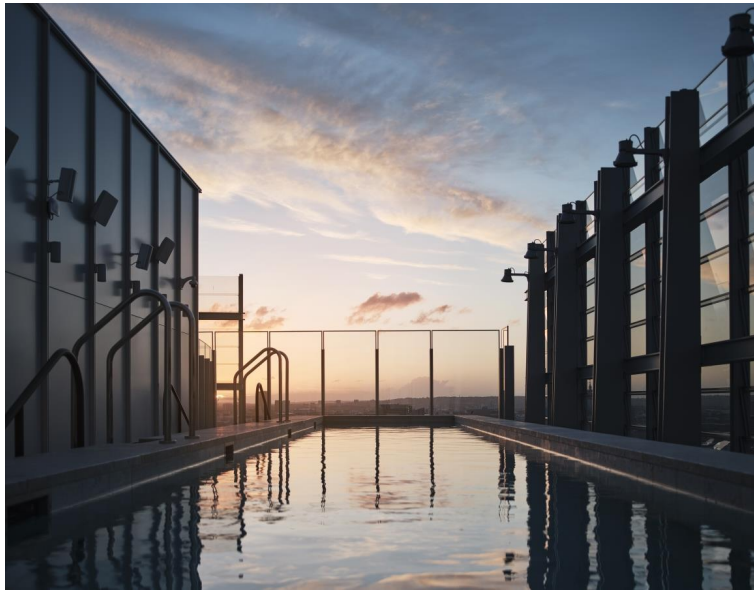
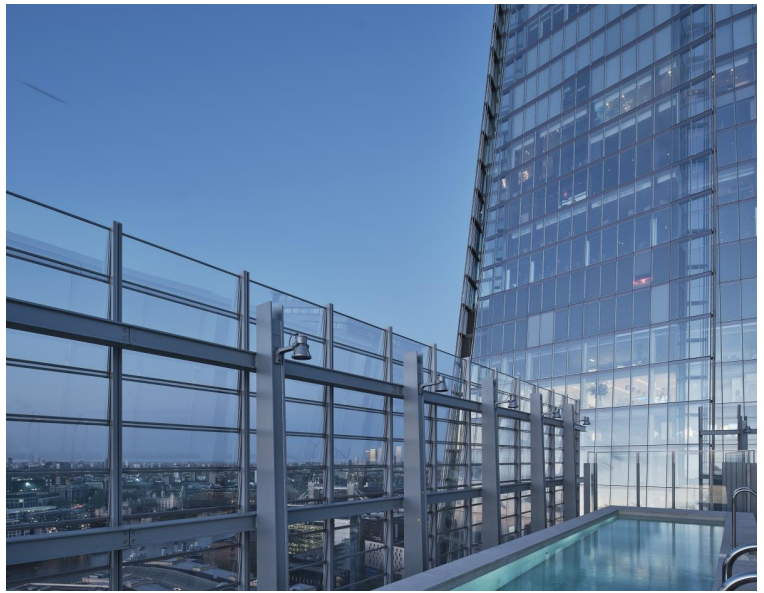


London Bridge Street, London SE1

Price £1,200 per week - Furnished







Description

Exclusive to the market! JLL are excited to present Shard Place. A meticulously designed selection of two bedroom apartments, nestled beside the iconic Shard building in the heart of London.

Discover an unparalleled living experience at Shard Place, an exclusive collection of meticulously designed apartments at Shard Quarter.

Each apartment has bespoke oak furniture throughout, integrated Siemens kitchen appliances, fitted wardrobes, floor-to-ceiling windows, and underfloor heating/ comfort cooling. A selection of apartments come with naturally ventilated winter gardens offering a sophisticated space for living and relaxation.

Residents are free to enjoy London's highest heated rooftop swimming pool and sun deck, offering a serene retreat high above the City streets. The private wellness suite complete with a steam room & sauna is found alongside the cutting-edge gym facilities equipped with the latest Technogym equipment.

Other outstanding amenities include a stunning double-height orangery with a south-facing terrace and private residents lounge, providing the ideal settings to unwind.

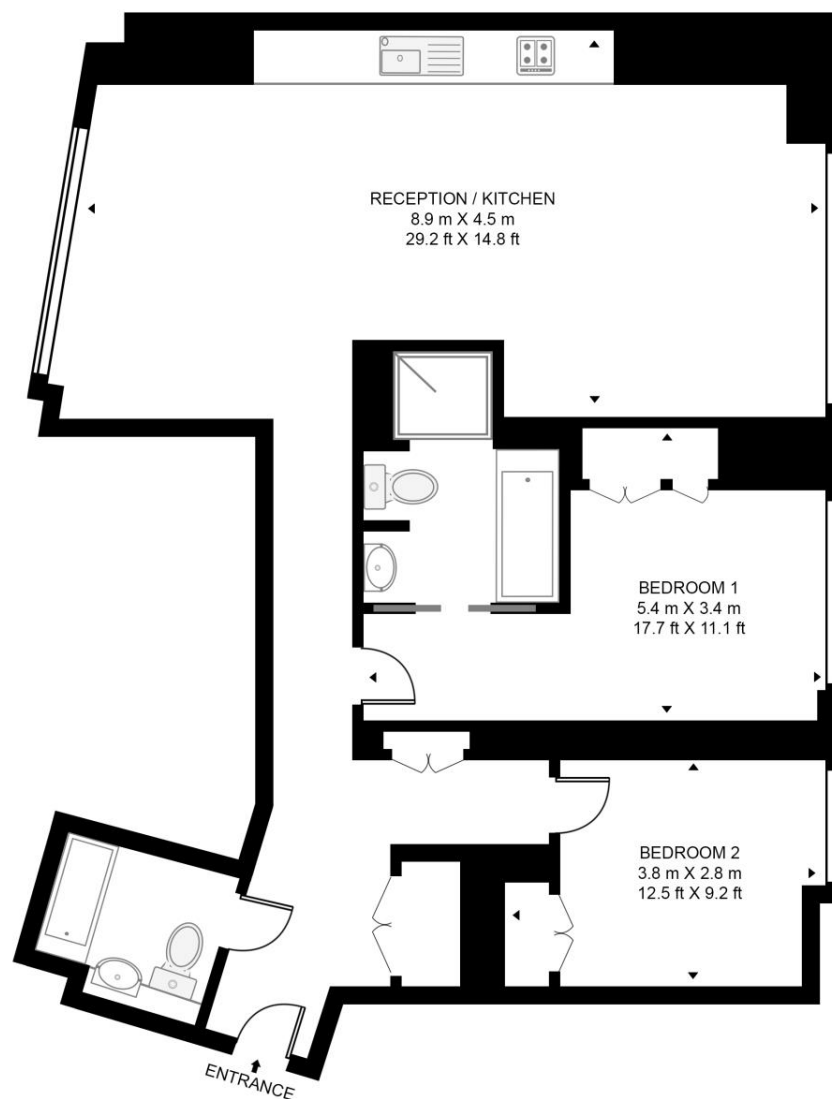
- Two double bedrooms
- One family bathroom and one en-suite
- Private winter garden
- 24-hour concierge & security
- Amenities such as a private gym, pool, cinema, residents lounge, and orangery
- Minutes away from London Bridge Station
- Fully furnished with bespoke oak furniture
- EPC: B
- Council tax band: H

Floorplan

sq ft | sq m

SHARD PLACE, SHARD QUARTER

APPROXIMATE GROSS INTERNAL FLOOR AREA 1003 SQ.FT (93.2 SQ.M)



SIXTH FLOOR



This floor plan has been defined by the RICS Code of Measurement. This floor plan and all others are for approximate representative purposes only and upon usage is agreed to as such by the client.
WWW: hdvirtualart.com | TEL: 0203.974.1567 | EMAIL: info@hdvirtualart.com

City
25 Walbrook The Walbrook
Building,
London EC4N 8AF
+4420 7337 4000

Urban living, your way.

jll.co.uk/residential

© 2019 Jones Lang LaSalle IP, Inc. All rights reserved. All information contained herein is from sources deemed reliable; however, no representation or warranty is made to the accuracy thereof.

