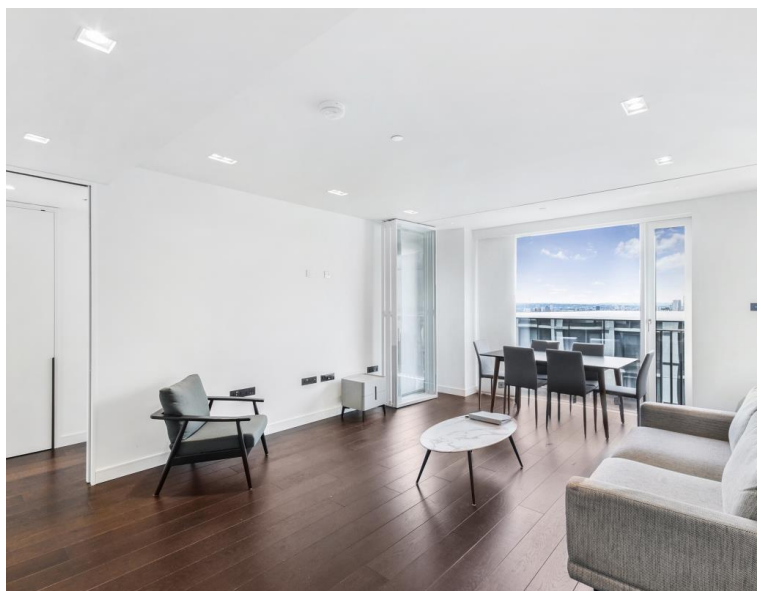




Casson Square, London SE1

Price £1,165 per week - Furnished







Description

JLL are delighted to present this 2 bedroom apartment situated on the 22nd floor of the sought after 8 Casson Square a luxury development moments from Waterloo Station, SE1.

This stunning 2 bedroom apartment is situated on the 22nd floor and comprises 2 double bedrooms with large fitted wardrobes to each, living area with a fully fitted open plan kitchen to include Miele and Siemens appliances, balcony with stunning views, wood flooring and excellent storage space. The property has a high specification throughout featuring comfort cooling, underfloor heating and smart home technology.

8 Casson Square is in the heart of Southbank and on the doorstep of Waterloo Station (0.2 miles) with access to over ground routes, Bakerloo, Waterloo and City, Jubilee and Northern lines which provide easy access to Central London. The development benefits from luxury amenities which include an on-site gym, swimming pool with spa, exclusive resident's lounge and 24-hour concierge.

We understand that cooling / heating is delivered via a communal system for which separate charges apply.

Rent is payable on a monthly basis and you may be required to

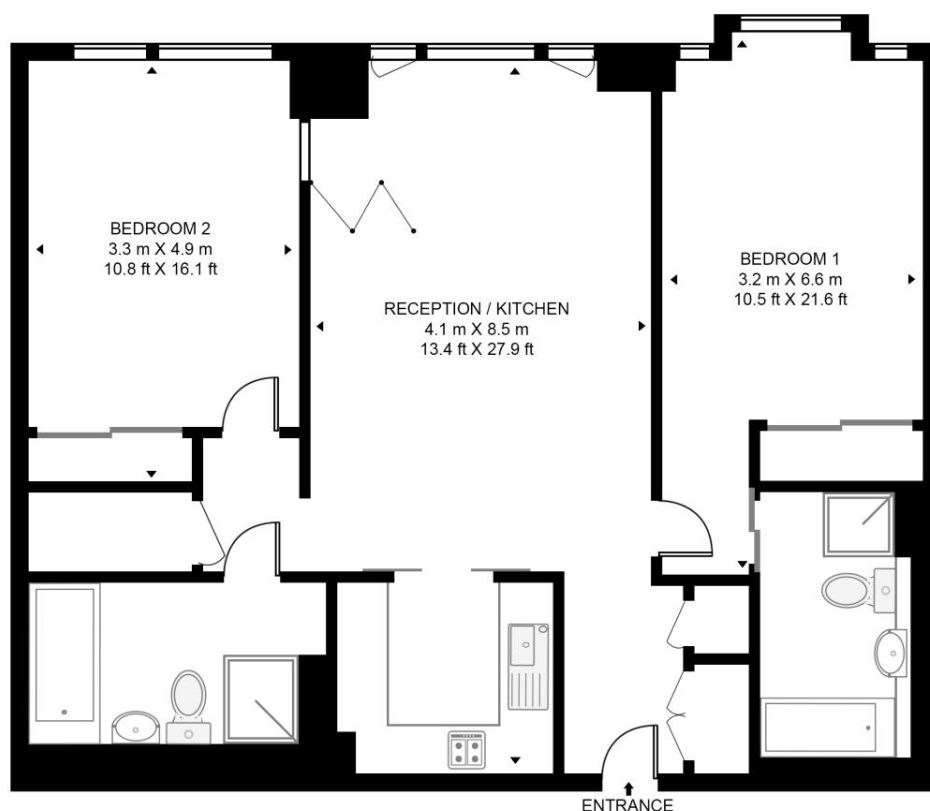
- 2 Bedrooms
- 2 Bathrooms
- 22nd floor
- Balcony with stunning views
- Underfloor heating
- 24 hour concierge
- On-site leisure facilities including spa, cinema and gym
- 0.2 miles from Waterloo Station
- Approx. 956 sq ft (88 sq m)
- Furnished

Floorplan

956 sq ft | 89 sq m

CASSON SQUARE

APPROXIMATE GROSS INTERNAL FLOOR AREA 956 SQ.FT (88.8 SQ.M)



TWENTY SECOND FLOOR



This floor plan has been defined by the RICS Code of Measurement. This floor plan and all others are for approximate representative purposes only and upon usage is agreed to as such by the client.

WWW: hdvirtualart.com | TEL: 0203.974.1567 | EMAIL: info@hdvirtualart.com

City
25 Walbrook The Walbrook
Building,
London EC4N 8AF
+4420 7337 4000

Urban living, your way.

jll.co.uk/residential

© 2019 Jones Lang LaSalle IP, Inc. All rights reserved. All information contained herein is from sources deemed reliable; however, no representation or warranty is made to the accuracy thereof.

