



**Marcia Road, London SE1**

Price £900 per week - Furnished











## Description

A stunning four double bedroom, two bathroom house in a pleasant residential street in Zone 1.

Located on Marcia Road, this furnished house benefits from residential parking (permit required) and offers plenty of space, including a separate kitchen and lounge area with large windows offering plenty of natural light. The kitchen overlooks a private patio garden, perfect for summer BBQ's. The house is spread over three stories and includes a downstairs WC, one bathroom and one en-suite.

The house is being re-painted throughout and is located next to a main bus route on Old Kent Road. Bus routes include 453 to the West End, 21 to London Bridge and 168 to Waterloo. The house is conveniently located a short walk away from a large Tesco Supermarket.

As well as paying the rent, you may also be required to make some additional permitted payments. If your tenancy does not qualify as an AST, additional fees may apply. Please visit [jll.co.uk/fees](http://jll.co.uk/fees) for details of fees which may be payable when renting a property.

- 4 Bedrooms
- 2 Bathrooms
- Terraced house
- Private patio garden
- Permit parking
- 1.1 mile to Bermondsey tube station
- Approx. 1,174 sq ft (109 sq m)
- Furnished
- EPC: C

# Floorplan

sq ft | sq m

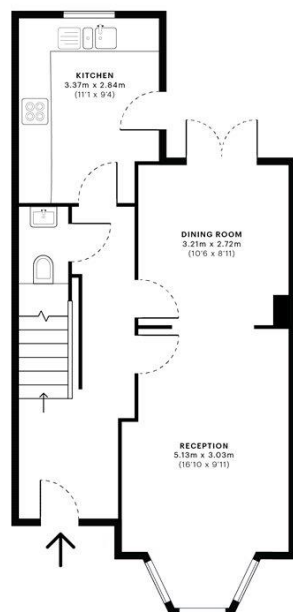
Marcia Road, SE1

Gross Internal Area

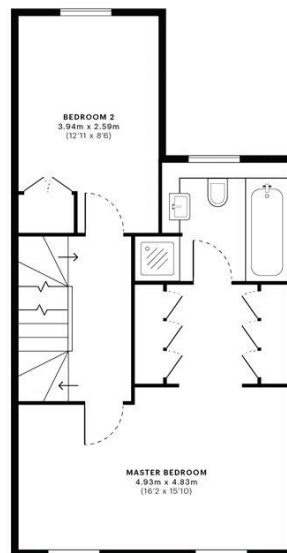
114.1 Sqm / 1227.8 Sqft

Net Internal Area

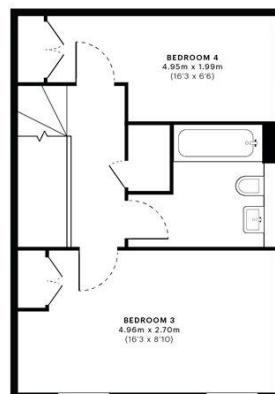
109.1 Sqm / 1174.9 Sqft



— Ground Floor



— First Floor



— Second Floor

This floor plan was captured for JLL, Elephant & Castle on 12/04/2018. Architectural features to scale, derived from millions of laser scan points, accurate to +/- 3cm and produced in accordance with the Royal Institute of Chartered Surveyors Property Measurement standards. Gross Internal Area is measured from the internal faces of external walls and includes internal walls/obstructions. Net Internal Area excludes internal walls/obstructions. Please perform your own checks before relying on these figures in any transaction.



City  
25 Walbrook The Walbrook  
Building,  
London EC4N 8AF  
+4420 7337 4000

*Urban living, your way.*

[jll.co.uk/residential](http://jll.co.uk/residential)

© 2019 Jones Lang LaSalle IP, Inc. All rights reserved. All information contained herein is from sources deemed reliable; however, no representation or warranty is made to the accuracy thereof.

