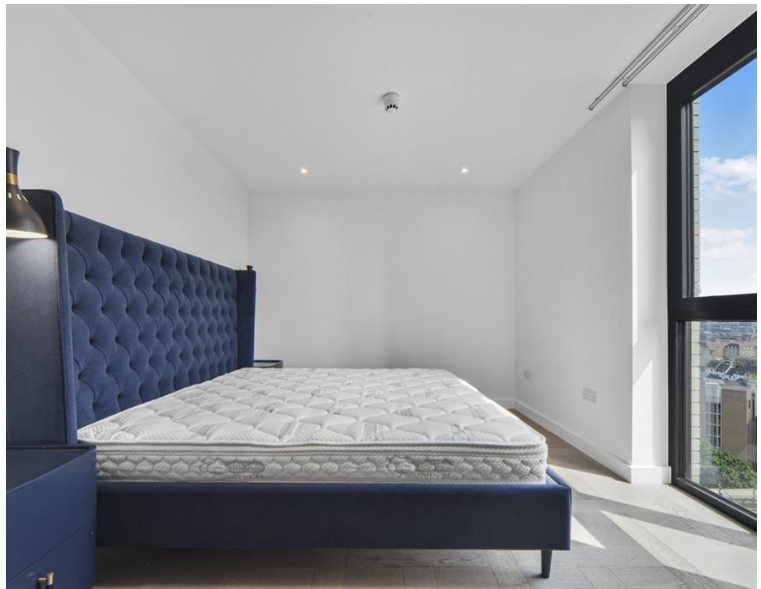
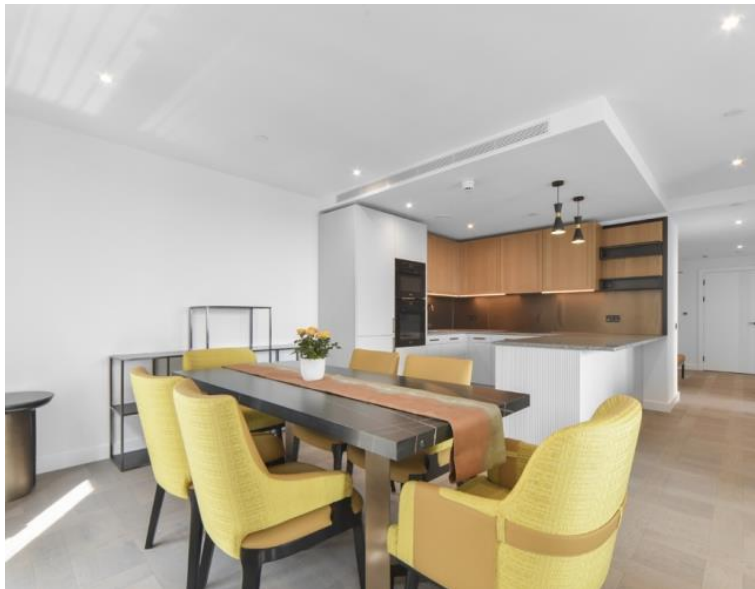


## Boxwood Gardens, London E1W

Price £1,338 per week - Furnished









## Description

This brand new three bedroom property has been both finished and furnished to the highest standard with luxurious fixtures and fittings throughout.

The property benefits from an open plan reception room with fully fitted kitchen and leading to a private balcony.

There are three spacious double bedrooms with the master benefitting from great storage and an ensuite bathroom. The property also benefits from 5\* onsite leisure facilities, water gardens and 24 hour concierge.

London Dock is situated a short walk from Waitrose, local coffee shops and pubs, Tower Hill and Fenchurch Street stations.

We understand that cooling / heating is delivered via a communal system for which separate charges apply.

Rent is payable on a monthly basis and you may be required to pay more than a month's rent in advance, depending on your circumstances. You will be required to pay a 1 week holding deposit following a successful offer.

- Brand new
- 3 Bedrooms
- 2 Bathrooms, plus 1 ensuite
- 12th floor with stunning views
- Private Balcony
- Amenities including swimming pool, sauna, steam room, gym, squash court, cinema & virtual golf
- 24 hour concierge
- 0.7 miles from Tower Hill station (District/ Circle line)
- 0.8 miles from Shadwell Station (Overground/DLR)
- One allocated parking space

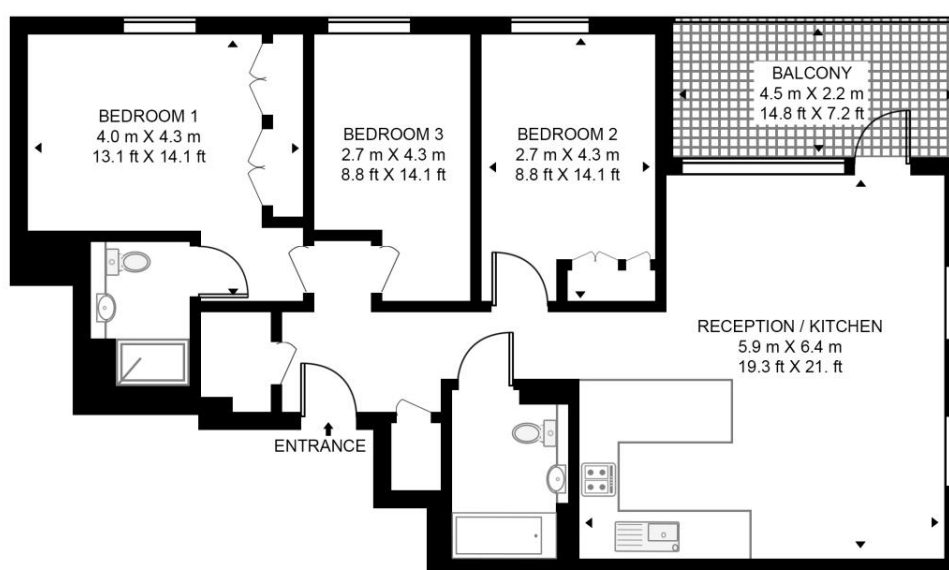


# Floorplan

1,068 sq ft | 99 sq m

## BOXWOOD GARDENS

APPROXIMATE GROSS INTERNAL FLOOR AREA 1068 SQ.FT (99.2 SQ.M)



## TWELFTH FLOOR



This floor plan has been defined by the RICS Code of Measurement. This floor plan and all others are for approximate representative purposes only and upon usage is agreed to as such by the client.

WWW: [hdvirtualart.com](http://hdvirtualart.com) | TEL: 0203.974.1567 | EMAIL: [info@hdvirtualart.com](mailto:info@hdvirtualart.com)

City  
25 Walbrook The Walbrook  
Building,  
London EC4N 8AF  
+4420 7337 4000

*Urban living, your way.*

[jll.co.uk/residential](http://jll.co.uk/residential)

© 2019 Jones Lang LaSalle IP, Inc. All rights reserved. All information contained herein is from sources deemed reliable; however, no representation or warranty is made to the accuracy thereof.

