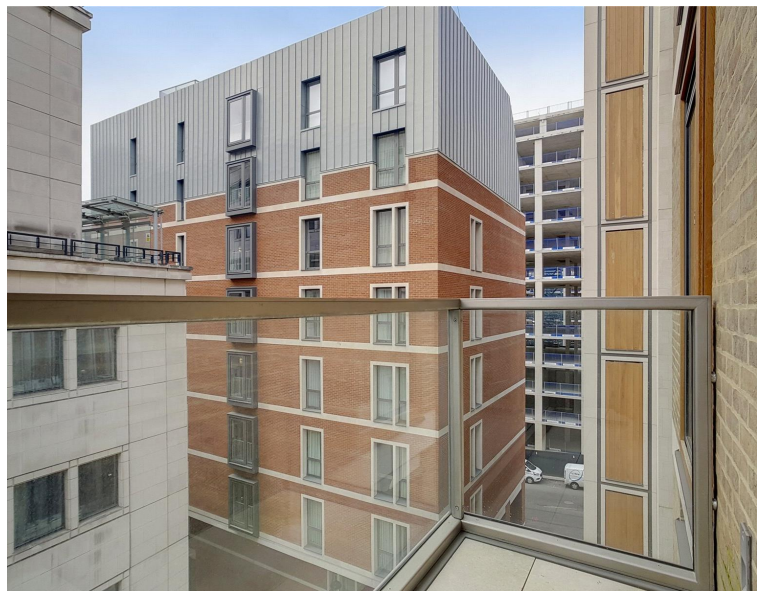




Strand, London WC2R

Price £1,060 per week - Furnished







Description

A stunning 1 bedroom apartment in the sought after 190 Strand, WC2.

Offering approximately 641 sq ft of living space, this spacious 1 bedroom apartment is situated on the 3rd floor, offered fully furnished and comprises a large reception area, contemporary open plan kitchen, double bedroom with large fitted wardrobes, contemporary bathroom with marble finish, wood flooring and excellent storage.

The development offers on site leisure facilities, including gymnasium, swimming pool, private cinema, business / conference facilities and 24 hour concierge. The development is situated on the world famous Strand, Westminster WC2, 0.2 miles from Temple station and 0.5 miles from Covent Garden.

We understand that cooling / heating is delivered via a communal system for which separate charges apply.

Rent is payable on a monthly basis and you may be required to pay more than a month's rent in advance, depending on your circumstances. You will be required to pay a 1 week holding deposit following a successful offer. Utility bills, council tax, telephone line and broadband are not included in the rent. As w

- 1 Bedroom
- 1 Bathroom
- 3rd Floor
- Balcony
- Open-plan kitchen
- 24 hour concierge
- On site leisure facilities
- 0.2 mile from Temple Station
- Approx. 659.3 sq ft (61.3 sq m)
- Furnished

Floorplan

659 sq ft | 61 sq m

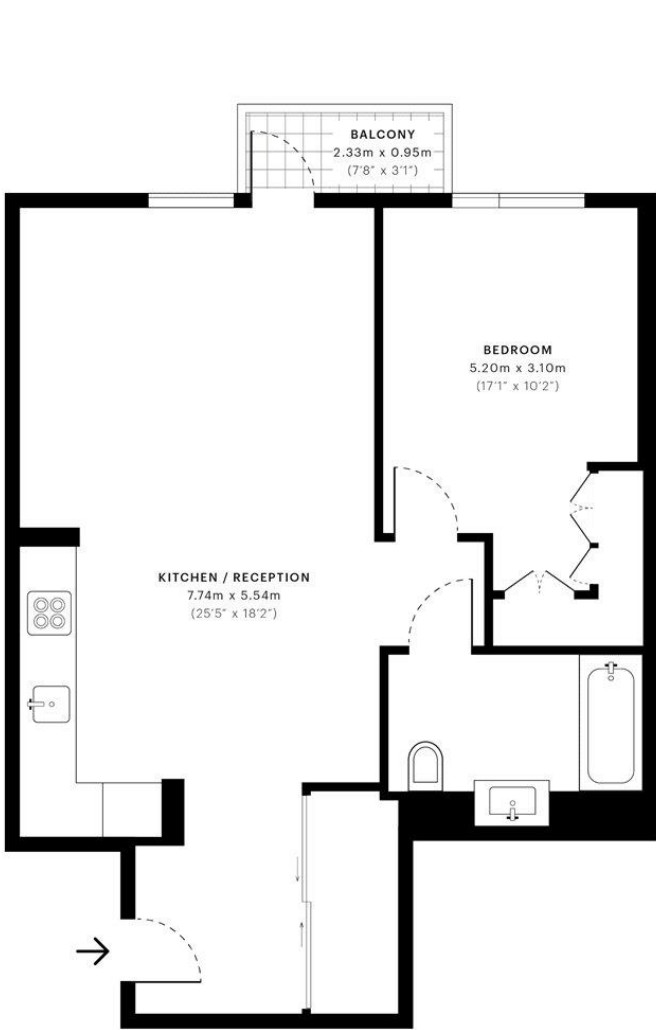


Milford House, WC2R

CAPTURE DATE
28/02/2019

LASER SCAN POINTS
24,059,756

GROSS INTERNAL AREA
61.3 Sqm / 659.3 Sqft



— Third Floor

 GROSS INTERNAL AREA
The footprint of the property
61.3 Sqm / 659.3 Sqft

 NET AREA (INTERNAL)
Excludes walls and external features
59.6 Sqm / 641.3 Sqft

 EXTERNAL STRUCTURAL FEATURES
Balconies, terraces, verandas etc.
2.2 Sqm / 24.0 Sqft

 RESTRICTED HEAD HEIGHT
Limited use areas under 1.5m
0.0 Sqm / 0.0 Sqft



Spec floor plans are produced in accordance with Royal Institution of Chartered Surveyors Property Measurement Standards. If you intend to rely on any measurement in a transaction you should perform your own checks. Plot/Gardens illustrative only and excluded from all area calculations.

IPMS 3B RESIDENTIAL
64.0 Sqm / 689.0 Sqft
IPMS 3C RESIDENTIAL
62.3 Sqm / 670.9 Sqft

SPEC ID
5c7570163ectfd0a077619af

City
25 Walbrook The Walbrook
Building,
London EC4N 8AF
+4420 7337 4000

Urban living, your way.

jll.co.uk/residential

© 2019 Jones Lang LaSalle IP, Inc. All rights reserved. All information contained herein is from sources deemed reliable; however, no representation or warranty is made to the accuracy thereof.

