

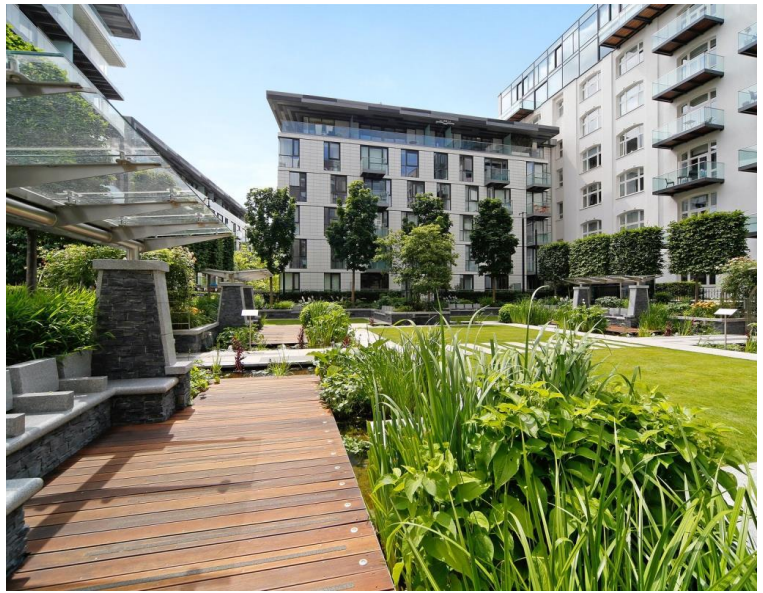


**Piazza Walk, London E1**  
Price £585 per week - Furnished









## Description

A stunning studio apartment in Neroli House at Goodmans Fields, conveniently located on the doorstep of the City of London.

Situated on the 8th floor, this spacious studio apartment is approximately 444 sq ft and comprises open plan living / sleeping area, large fitted wardrobes, high specification with solid wooden flooring, contemporary kitchen with Siemens appliances, luxury shower room with Porcelain tiled finish and excellent storage space.

Benefits include on-site leisure facilities with the gym, swimming pool and 5 star healthcare centre, private cinema room, business / conference facilities and 24 hour concierge. Approximately 0.1 mile from Aldgate East and located in Zone 1.

We understand that cooling / heating is delivered via a communal system for which separate charges apply.

Rent is payable on a monthly basis and you may be required to pay more than a month's rent in advance, depending on your circumstances. You will be required to pay a 1 week holding deposit following a successful offer. Utility bills, council tax, tele

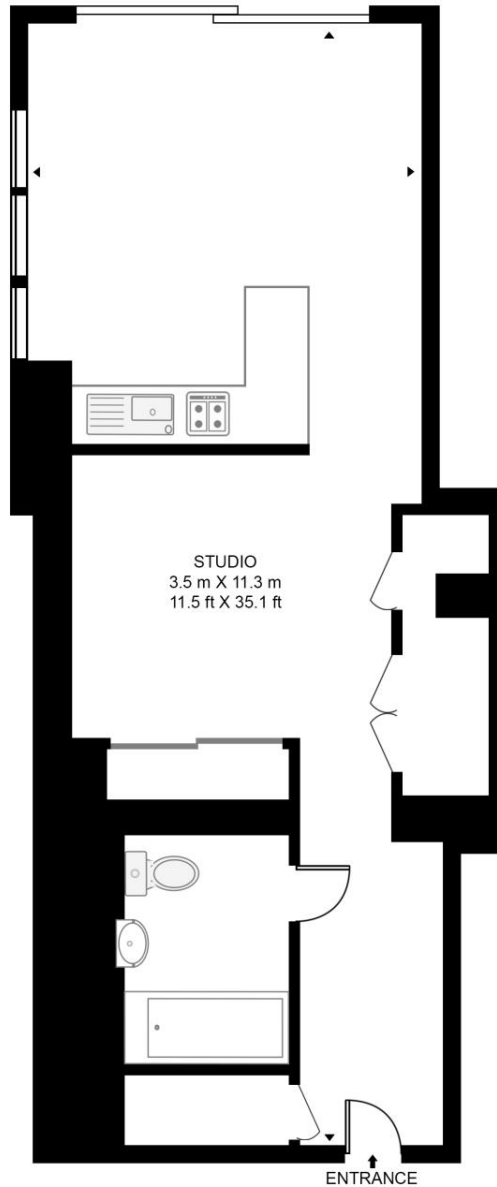
- Studio
- 1 Bathroom
- 8th Floor
- Open-plan living area
- Balcony
- 24 hour concierge
- On-site leisure facilities including swimming pool, gym and cinema
- 0.3 miles from Aldgate Station
- Approx. 444 sq ft (41.3 sq m)
- Furnished

# Floorplan

444 sq ft | 41 sq m

## NEROLI HOUSE, GOODMAN'S FIELD

APPROXIMATE GROSS INTERNAL FLOOR AREA 444 SQ.FT (41.3 SQ.M)



EIGHTH FLOOR



This floor plan has been defined by the RICS Code of Measurement. This floor plan and all others are for approximate representative purposes only and upon usage is agreed to as such by the client.  
WWW: [hdvirtualart.com](http://hdvirtualart.com) | TEL: 0203.974.1567 | EMAIL: [info@hdvirtualart.com](mailto:info@hdvirtualart.com)

City  
25 Walbrook The Walbrook  
Building,  
London EC4N 8AF  
+4420 7337 4000

*Urban living, your way.*

[jll.co.uk/residential](http://jll.co.uk/residential)

© 2019 Jones Lang LaSalle IP, Inc. All rights reserved. All information contained herein is from sources deemed reliable; however, no representation or warranty is made to the accuracy thereof.

