

**Southwark Bridge Road, London SE1**

Price £535 per week - Furnished









## Description

A stunning studio apartment in one of Elephant & Castle's most sought after developments, Two Fifty One (251).

Situated in the 17th floor, this spacious studio apartment offers approximately 438 sq ft of living space and boasts Easterly views. This stunning studio apartment is offered on a fully furnished basis and comprise a large open plan reception / sleeping area, fully fitted kitchen with Siemens appliances, contemporary shower room with Italian marble finish, wood Oak flooring and excellent storage space.

Two Fifty One (251) is located in the heart of Southwark, zone 1 and well situated for the City of London with Elephant & Castle station just 0.1 miles away. Residents also benefit from 24 hour concierge, on site gymnasium, private cinema and private club / dining areas.

We understand that cooling / heating is delivered via a communal system for which separate charges apply.

Rent is payable on a monthly basis and you may be required to pay more than a month's rent in advance, depending on your circumstances. You will be required to pay a 1 week holding deposit following a successful offer. Utility bills, council tax, tele

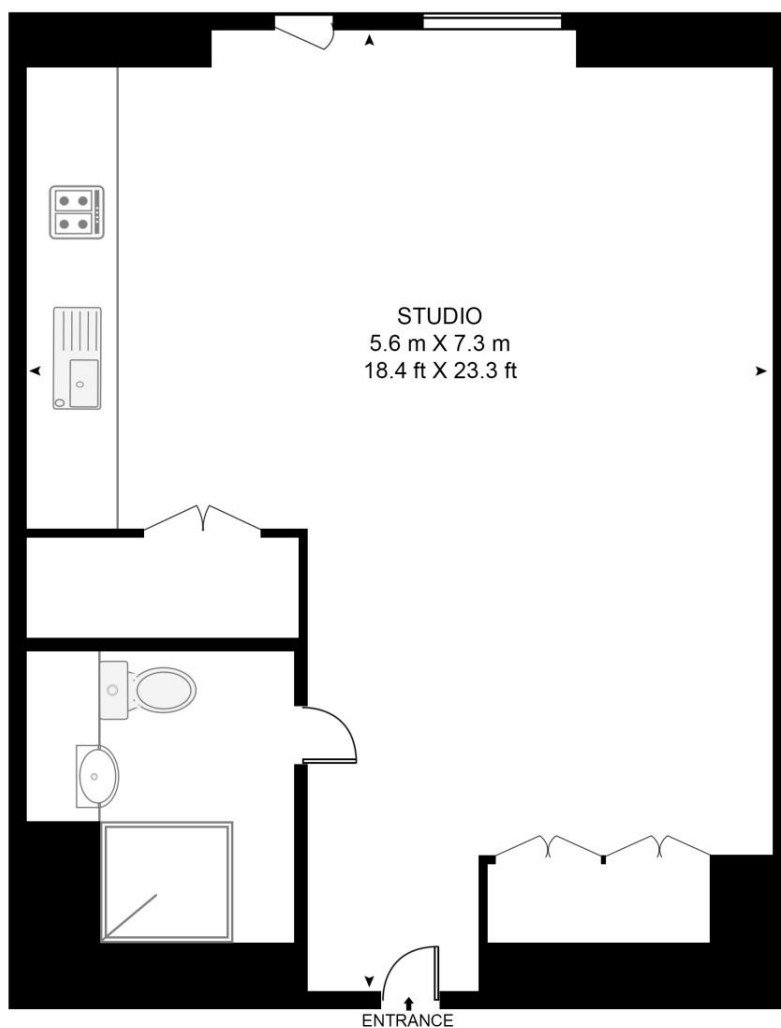
- Studio
- 1 Bathroom
- 17th Floor
- Gym
- On-site leisure facilities
- 24 hour concierge
- 0.1 miles from Elephant & Castle Station
- Approx. 438 sq ft (40.7 sqm)
- Furnished
- EPC: B

# Floorplan

438 sq ft | 41 sq m

**TWO FIFTY ONE, SOUTHWARK BRIDGE ROAD**

APPROXIMATE GROSS INTERNAL FLOOR AREA 438 SQ.FT (40.7 SQ.M)



SEVENTEENTH FLOOR



This floor plan has been defined by the RICS Code of Measurement. This floor plan and all others are for approximate representative purposes only and upon usage is agreed to as such by the client.  
WWW: [hdvirtualart.com](http://hdvirtualart.com) | TEL: 0203.974.1567 | EMAIL: [info@hdvirtualart.com](mailto:info@hdvirtualart.com)

City  
25 Walbrook The Walbrook  
Building,  
London EC4N 8AF  
+4420 7337 4000

*Urban living, your way.*

[jll.co.uk/residential](http://jll.co.uk/residential)

© 2019 Jones Lang LaSalle IP, Inc. All rights reserved. All information contained herein is from sources deemed reliable; however, no representation or warranty is made to the accuracy thereof.

