

Southwark Bridge Road, London SE1

Price £600 per week - Furnished







Description

A sought after 1 bedroom apartment in Elephant & Castle's latest tower, Two Fifty One (251).

This luxury 1 bedroom apartment is offered furnished, offering approximately 520 sq ft of living space and is situated on the 15th floor. The property comprises 1 double bedroom with large fitted wardrobes, large open plan reception with fully fitted kitchen, contemporary bathroom, wood flooring and good storage space.

Two Fifty One (251) is located in the heart of Southwark, zone 1 and well situated for the City of London with Elephant & Castle station just 0.1 miles away. Residents also benefit from 24 hour concierge, on site gymnasium, private cinema and private club / dining areas.

We understand that cooling / heating is delivered via a communal system for which separate charges apply.

Rent is payable on a monthly basis and you may be required to pay more than a month's rent in advance, depending on your circumstances. You will be required to pay a 1 week holding deposit following a successful offer. Utility bills, council tax, telephone line and broadband are not included in the rent.

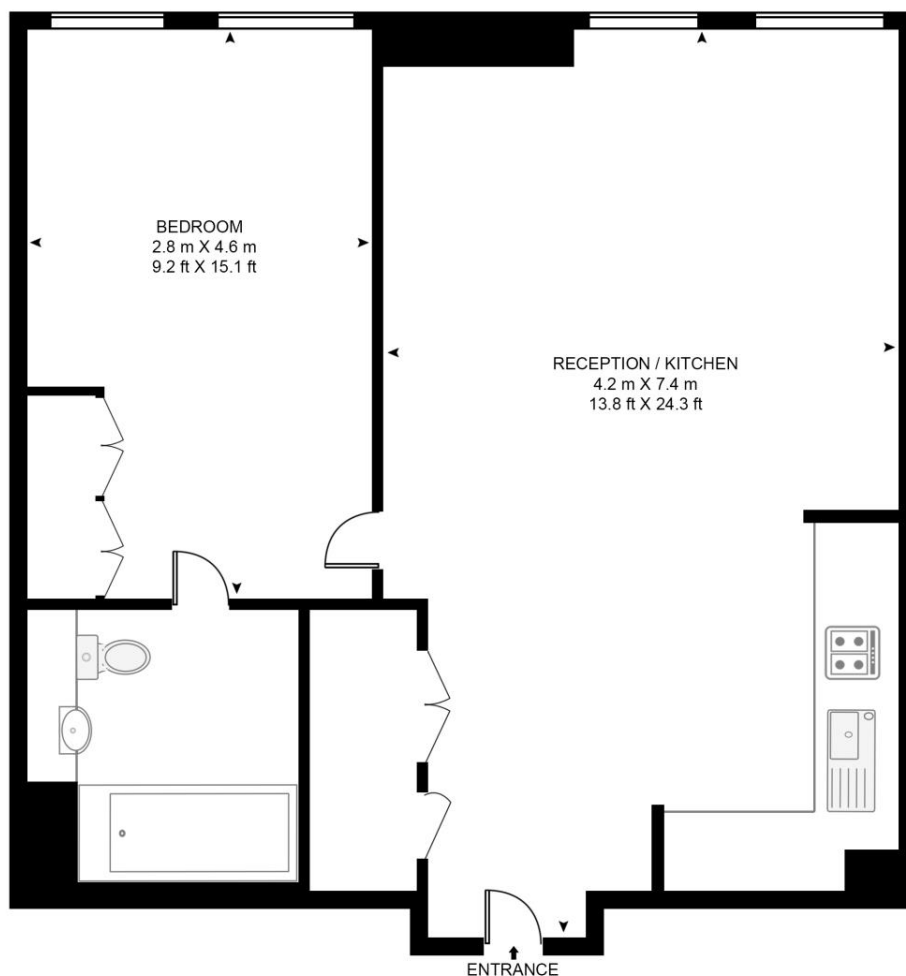
- 1 Bedroom
- 1 Bathroom
- 15th Floor
- 24 hour concierge
- On site leisure facilities
- 0.1 miles away from Elephant & Castle Station
- Approx. 525 sq ft (48.8 sq m)
- Furnished
- EPC: B
- Council tax: Band D

Floorplan

525 sq ft | 49 sq m

TWO FIFTY ONE

APPROXIMATE GROSS INTERNAL FLOOR AREA 525 SQ.FT (48.8 SQ.M)



FIFTEENTH FLOOR

HDVA

This floor plan has been defined by the RICS Code of Measurement. This floor plan and all others are for approximate representative purposes only and upon usage is agreed to as such by the client.

WWW: hdvirtualart.com | TEL: 0203.974.1567 | EMAIL: info@hdvirtualart.com

City
25 Walbrook The Walbrook
Building,
London EC4N 8AF
+4420 7337 4000

Urban living, your way.

jll.co.uk/residential

© 2019 Jones Lang LaSalle IP, Inc. All rights reserved. All information contained herein is from sources deemed reliable; however, no representation or warranty is made to the accuracy thereof.

