

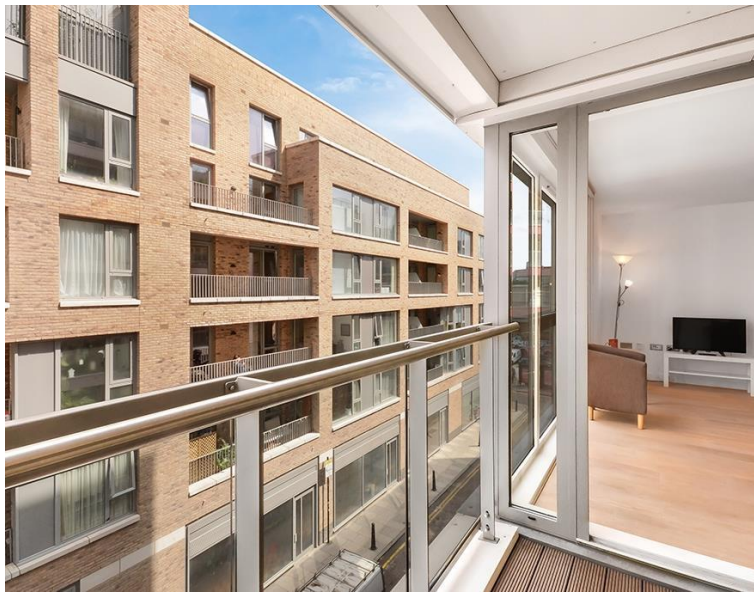


Avantgarde Place, London E1

Price £620 per week - Furnished







Description

A stunning 1 bedroom apartment in the Avantgarde development, in the heart of Shoreditch. Offering approximately 519 sq ft of living space, this spacious 1 bedroom apartment is situated on the 3rd floor and offers reception and dining area with access to balcony, large double bedroom with fitted wardrobes, open plan kitchen with Siemens appliances to include wine cooler, contemporary Roca bathroom, wood veneer flooring and excellent storage.

This luxury development has a high specification to include comfort cooling, resident's lounge, on site leisure facilities and 24 hour concierge. Based in the stylish hub of Shoreditch, the development is located in Zone 1, with local transport links such as Shoreditch High Street, Old Street, Hoxton and Aldgate.

We understand that cooling / heating is delivered via a communal system for which separate charges apply.

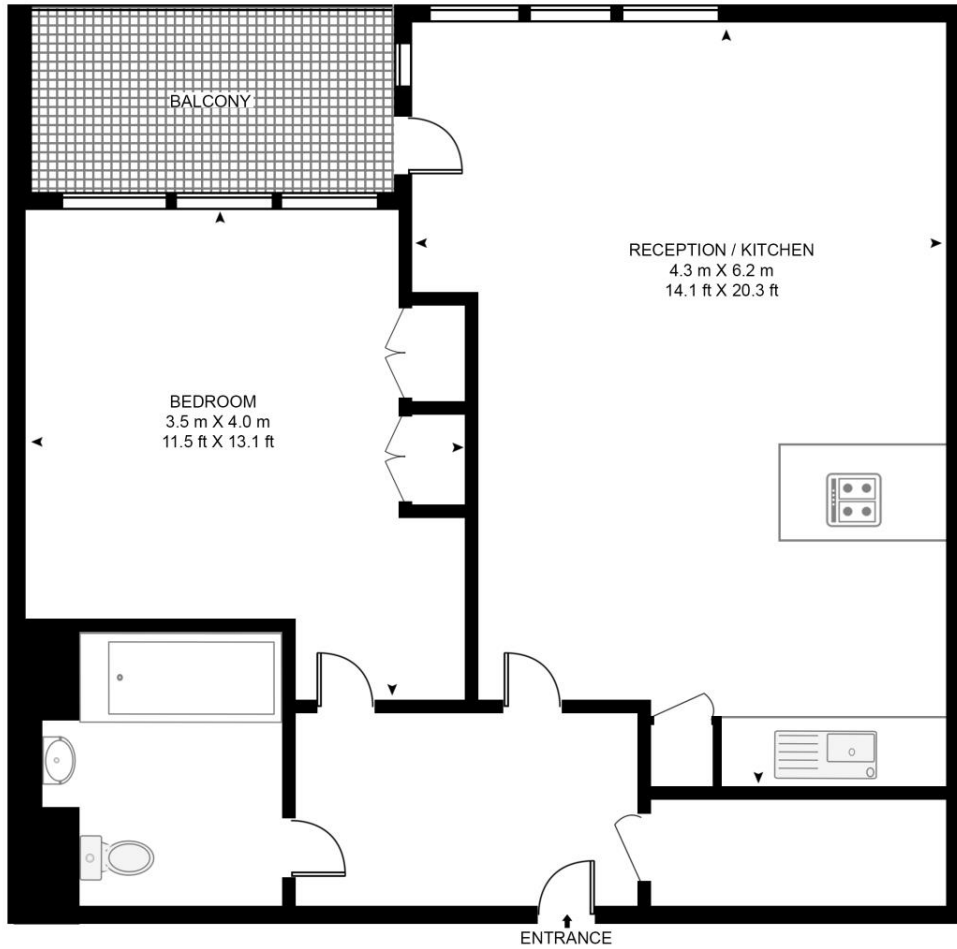
Rent is payable on a monthly basis and you may be required to pay more than a month's rent in advance, depending on your circumstances. You will be required to pay a 1 week holding deposit following a successful offer. Utility bills, council tax, telephone line and broadband are not included in the rent. As w

- 1 Bedroom
- 1 Bathroom
- 3rd floor
- Balcony
- 24 hour concierge
- 0.1 mile from Shoreditch High Street Overground Station
- Approx. 515 sq ft (47.9 sq m)
- Furnished
- EPC: B
- Council tax: Band C

Floorplan

515 sq ft | 48 sq m

COURTYARD APARTMENTS, 3 AVANTGARDE PLACE, LONDON, E1 6GU
APPROXIMATE GROSS INTERNAL FLOOR AREA 515 SQ.FT (47.9 SQ.M)



THIRD FLOOR

HDVA

This floor plan has been defined by the RICS Code of Measurement. This floor plan and all others are for approximate representative purposes only and upon usage is agreed to as such by the client.
WWW: hdvirtualart.com | TEL: 0203.974.1567 | EMAIL: info@hdvirtualart.com

City
25 Walbrook The Walbrook
Building,
London EC4N 8AF
+4420 7337 4000

Urban living, your way.

jll.co.uk/residential

© 2019 Jones Lang LaSalle IP, Inc. All rights reserved. All information contained herein is from sources deemed reliable; however, no representation or warranty is made to the accuracy thereof.

