



## Casson Square, London SE1

Price £865 per week - Furnished









## Description

A stunning 1 bedroom apartment in 8 Casson Square, a luxury development moments from Waterloo Station, SE1.

Offered fully furnished, this luxury 1 bedroom apartment is situated on the 13th floor and comprises large double bedroom with fully fitted wardrobes, spacious living area with floor to ceiling glazing maximising natural light, south facing winter garden, fully fitted open plan kitchen to include Miele and Siemens appliances, contemporary bathroom, wood flooring and excellent storage space. The property has a high specification throughout featuring comfort cooling, underfloor heating and smart home technology.

The development benefits from top of the range amenities which include an on-site gym, swimming pool with spa, exclusive resident's lounge and 24-hour concierge. 8 Casson Square is in the heart of Southbank and on the doorstep of Waterloo Station (0.2 miles) and moments from the iconic London Eye. The City of London is within easy reach as is London's famous West End.

We understand that cooling / heating is delivered via a communal system for which separate charges apply.

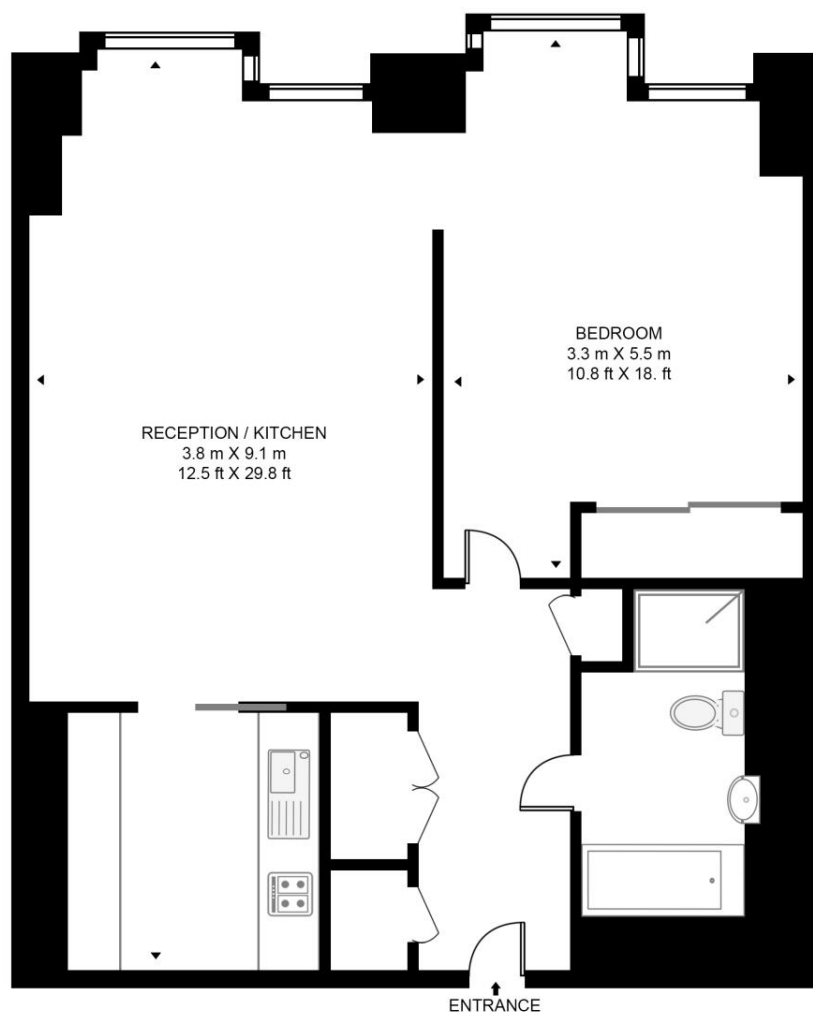
- 1 Bedroom
- 1 Bathroom
- 18th Floor
- Winter Garden
- Luxury fitted kitchen with Miele appliances
- 24 hour concierge
- Approx. 670 sq ft (62.3 sq m)
- 0.2 mile from Waterloo Station
- Luxury residents facilities
- Furnished

# Floorplan

670 sq ft | 62 sq m

## CASSON SQUARE

APPROXIMATE GROSS INTERNAL FLOOR AREA 670 SQ.FT (62.3 SQ.M)



## EIGHTEENTH FLOOR



This floor plan has been defined by the RICS Code of Measurement. This floor plan and all others are for approximate representative purposes only and upon usage is agreed to as such by the client.

WWW: [hdvirtualart.com](http://hdvirtualart.com) | TEL: 0203.974.1567 | EMAIL: [info@hdvirtualart.com](mailto:info@hdvirtualart.com)

City  
25 Walbrook The Walbrook  
Building,  
London EC4N 8AF  
+4420 7337 4000

*Urban living, your way.*

[jll.co.uk/residential](http://jll.co.uk/residential)

© 2019 Jones Lang LaSalle IP, Inc. All rights reserved. All information contained herein is from sources deemed reliable; however, no representation or warranty is made to the accuracy thereof.

