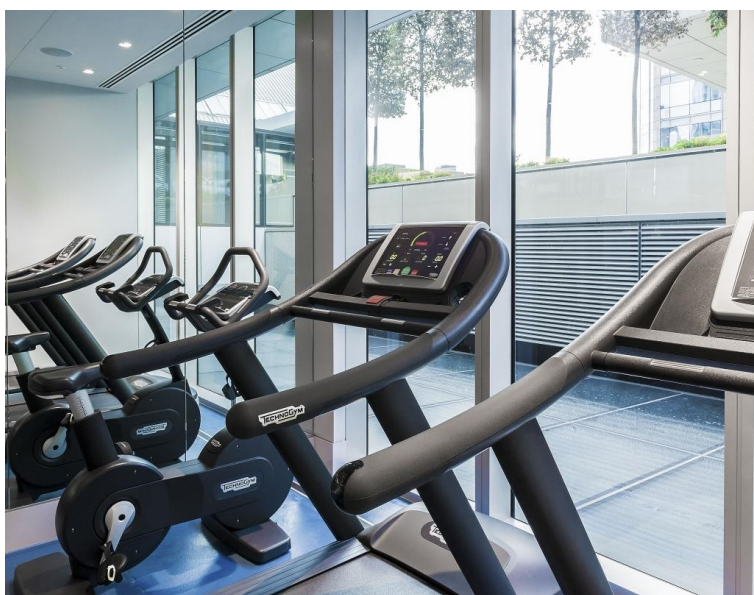


Moor Lane, London EC2Y
Price £615 per week - Furnished







Description

A beautifully finished West-facing Galley suite apartment on a high floor of the iconic Heron development, located in the heart of the City.

This modern and luxurious apartment offers a west-facing balcony, partitioned sleeping area with a desk/working space, open plan kitchen fully fitted with Miele appliances, wood veneer flooring throughout and luxury shower room with pearlised mosaic walls. The property has a high specification featuring comfort cooling and smart home technology including an iPod docking system, ceiling speakers and central control panel. The property is well designed to utilise all available space and maximise storage.

The development also benefits from an on-site gym, exclusive resident's club, 24 hour security and concierge. The Heron is located within zone 1, approximately 0.1 mile from Moorgate station.

We understand that cooling / heating is delivered via a communal system for which separate charges apply.

Rent is payable on a monthly basis and you may be required to pay more than a month's rent in advance, depending on your ci

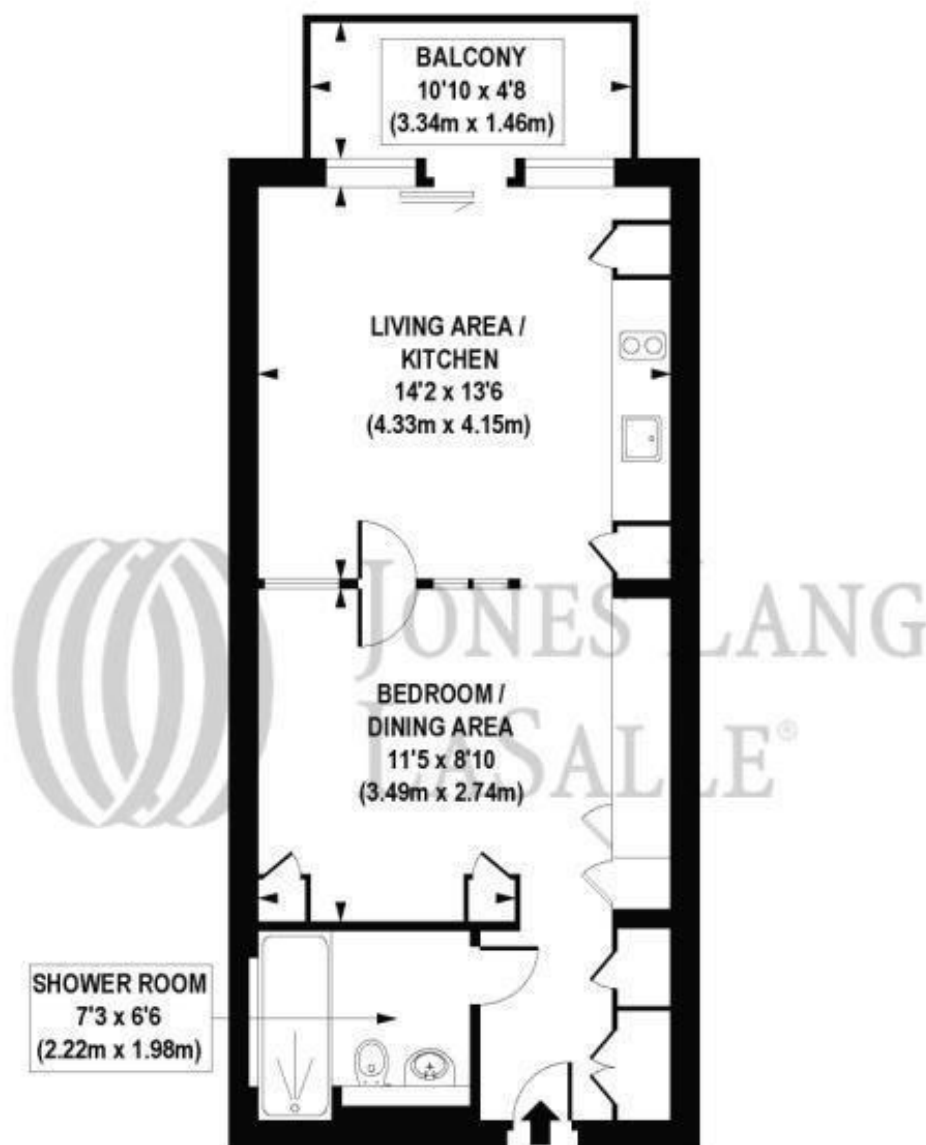
- Studio
- 1 Bathroom
- Balcony
- 24 hour concierge
- On-site leisure facilities including gym, swimming pool and resident's club
- 0.1 miles from Moorgate station
- Approx. 408 sq ft (38 sq m)
- Furnished
- EPC: C
- Council tax: Band E

Floorplan

408 sq ft | 38 sq m

* *Typical Galley Suite*

* *Balconies on selected units*



APPROX. GROSS INTERNAL FLOOR AREA 408 sq. ft / 38.00 sq. m

COMPLIANT WITH RICS CODE OF MEASURING PRACTICE Floorplan is for illustrative purposes only and is not to scale. Every attempt has been made to ensure the accuracy of the floorplan shown, however all measurements, fixtures, fittings and data shown are an approximate interpretation for illustrative purposes only. Liability for errors, omissions or mis-statement through negligence or otherwise is hereby excluded.



City
25 Walbrook The Walbrook
Building,
London EC4N 8AF
+4420 7337 4000

Urban living, your way.

jll.co.uk/residential

© 2019 Jones Lang LaSalle IP, Inc. All rights reserved. All information contained herein is from sources deemed reliable; however, no representation or warranty is made to the accuracy thereof.

