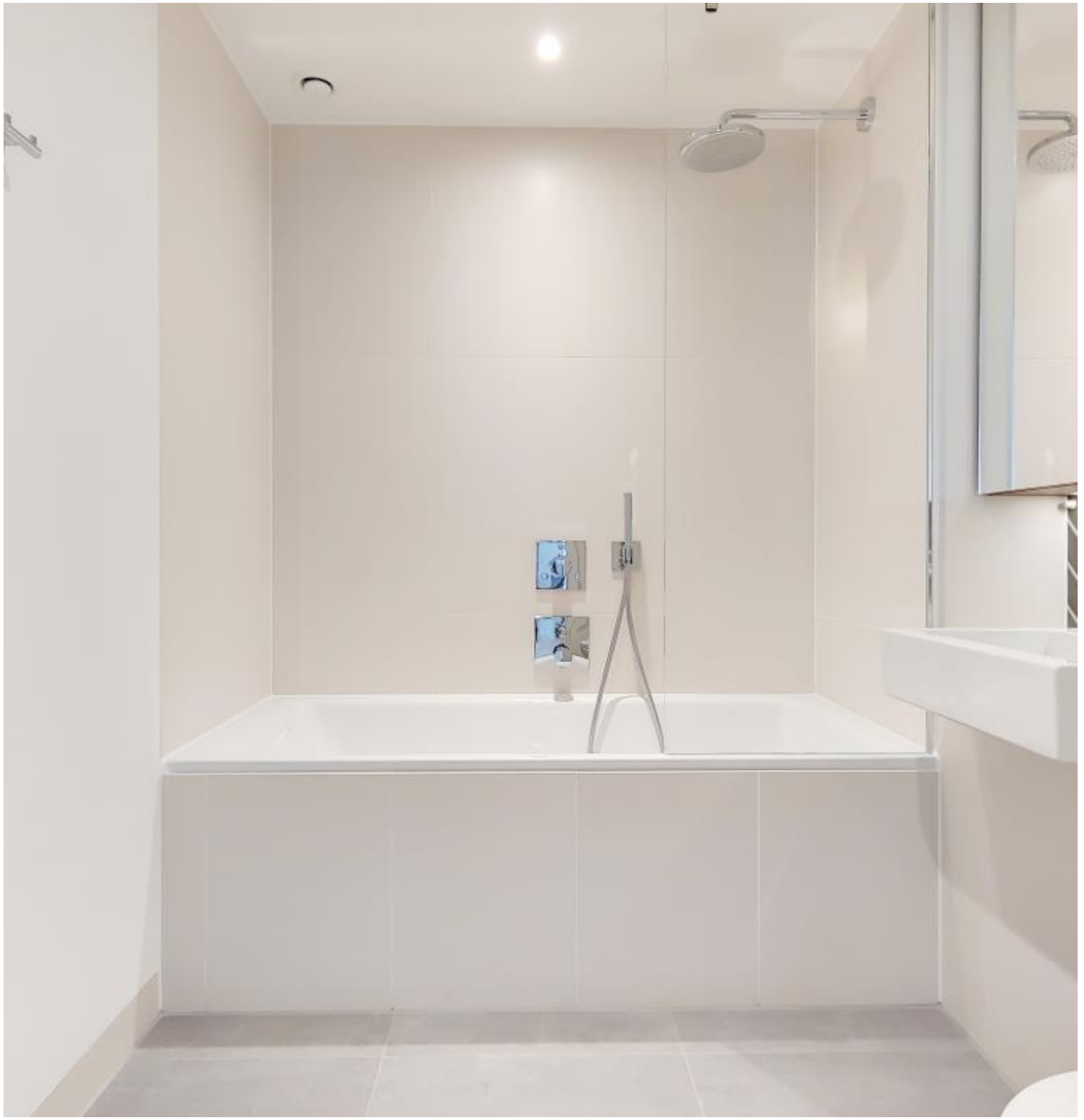


City Road, London EC1V

Price £735 per week - Furnished







Description

This luxury 1 bedroom apartment boasts approximately 540 sq ft of living space. The apartment comprises a large open plan reception with fully fitted kitchen, large East facing balcony, bedroom with large fitted wardrobe, luxury bathroom with Porcelain finish and solid wood flooring.

The Atlas Building is next to Old Street station (0.1 mile) and ideally situated for the City, Hoxton, Shoreditch and Angel. The development offers top of the range amenities which includes pool, spa, gymnasium, private cinema room, resident's only business lounge and 24 hour concierge.

We understand that cooling / heating is delivered via a communal system for which separate charges apply.

Rent is payable on a monthly basis and you may be required to pay more than a month's rent in advance, depending on your circumstances. You will be required to pay a 1 week holding deposit following a successful offer. Utility bills, council tax, telephone line and broadband are not included in the rent. As well as paying the rent, you may also be required to make some additional permitted payments. If your tenancy does not qualify as an AST, additional fees may apply. Please visit jll.co.uk/fees for details of fees which may be payable when ren

- 1 Bedroom
- 1 Bathroom
- 3rd Floor
- Large Balcony
- On-site leisure facilities including pool, spa and cinema
- 24 hour concierge
- 0.1 miles from Old Street Station
- Approx. 538 sq ft (50.0 sq m)
- Furnished
- EPC: B

Floorplan

538 sq ft | 50 sq m

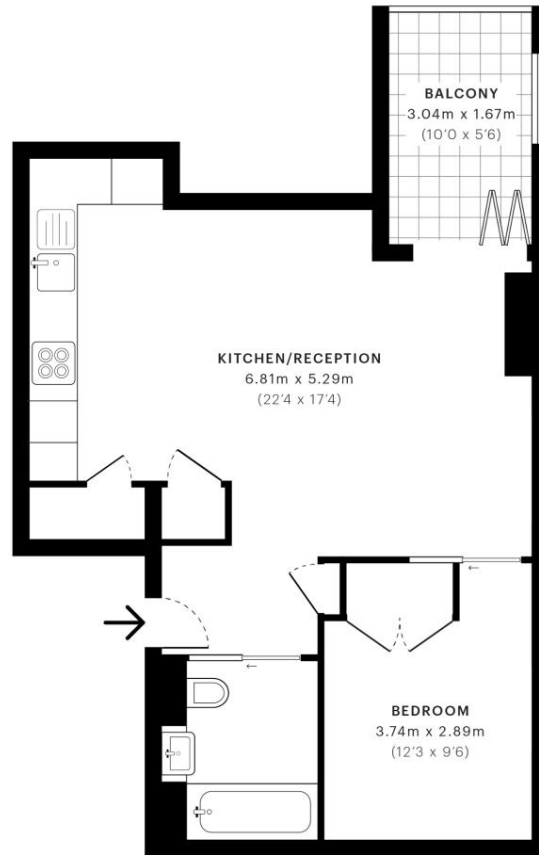


City Road, EC1V

CAPTURE DATE
16/07/2019

LASER SCAN POINTS
25,675,359

GROSS INTERNAL AREA
49.4 Sqm / 532.2 Sqft



— Third Floor

 GROSS INTERNAL AREA
The footprint of the property
49.4 Sqm / 532.2 Sqft

 NET AREA (INTERNAL)
Excludes walls and external features
47.5 Sqm / 511.4 Sqft

 EXTERNAL STRUCTURAL FEATURES
Balconies, terraces, verandas etc.
5.1 Sqm / 54.6 Sqft

 RESTRICTED HEAD HEIGHT
Limited use area under 1.5m
0.0 Sqm / 0.0 Sqft



Spec floor plans are produced in accordance with the Royal Institution of Chartered Surveyors' Property Measurement Standards. Plots and gardens are illustrative only and are excluded from all area calculations. Due to rounding, numbers may not add up precisely.



IPMS 3B RESIDENTIAL
54.5 Sqm / 586.9 Sqft

IPMS 3C RESIDENTIAL
52.6 Sqm / 566.1 Sqft

SPEC ID
5d275d88d7841909f2796b97

City
25 Walbrook The Walbrook
Building,
London EC4N 8AF
+4420 7337 4000

Urban living, your way.

jll.co.uk/residential

© 2019 Jones Lang LaSalle IP, Inc. All rights reserved. All information contained herein is from sources deemed reliable; however, no representation or warranty is made to the accuracy thereof.

