



Tapestry Way, London E1

Price £765 per week - Furnished







Description

A spacious, double aspect 2 bedroom apartment in Jacquard Point, part of the sought after Silk District, E1, well connected for the City of London.

Offered fully furnished, this spacious 2 bedroom apartment comprises a large open plan living / dining area, private balcony, 2 double bedrooms with fitted wardrobes to master, 2 luxury bathrooms, fully fitted kitchen with Oak effect finish, tiled flooring and excellent storage space.

The Silk District is a development from Mount Anvil and offers residents fantastic amenities which include 24 hour concierge, on site gym, cinema room, rooftop gardens and resident's lounge. The development is within easy reach of the City of London and in the heart of the Whitechapel regeneration area, approximately 0.3 miles from Whitechapel Underground / Crossrail station.

We understand that cooling / heating is delivered via a communal system for which separate charges apply.

Rent is payable on a monthly basis and you may be required to pay more than a month's rent in advance, depending on your circumstances.

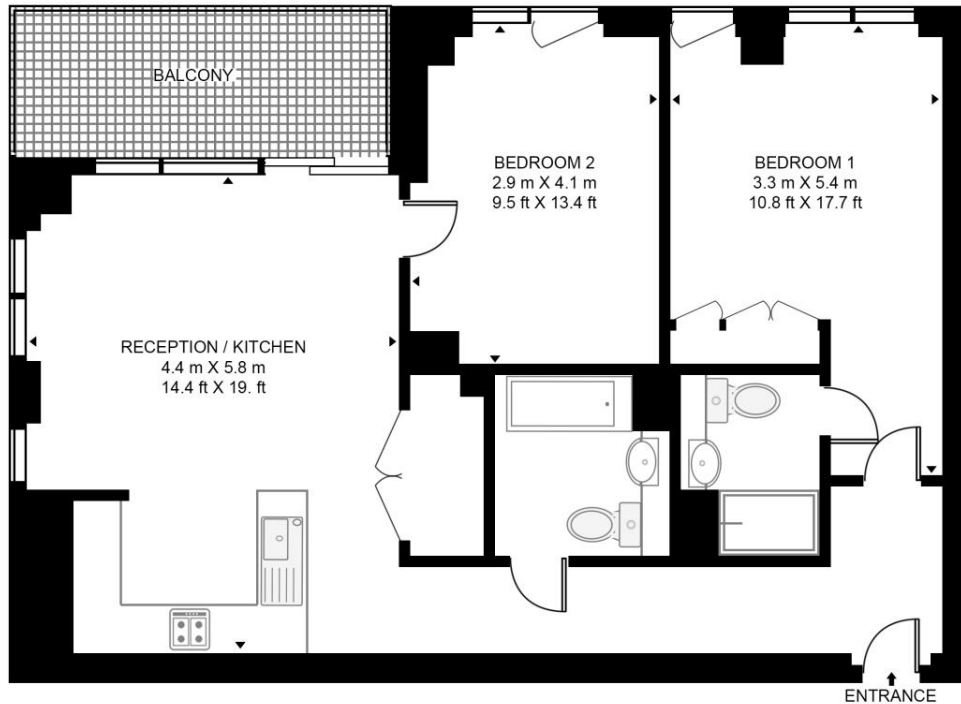
- 2 double bedrooms
- 2 luxury bathrooms
- 7th floor
- Private balcony
- Rooftop gardens
- 24 hour concierge
- On-site leisure facilities including cinema and gym
- 0.3 miles from Whitechapel Station
- Approx. 770 sq ft (71.5 sq m)
- Furnished

Floorplan

770 sq ft | 72 sq m

JAQUARD POINT, THE SILK DISTRICT

APPROXIMATE GROSS INTERNAL FLOOR AREA 770 SQ.FT (71.5 SQ.M)



SEVENTH FLOOR



This floor plan has been defined by the RICS Code of Measurement. This floor plan and all others are for approximate representative purposes only and upon usage is agreed to as such by the client.
WWW: hdvirtualart.com | TEL: 0203.974.1567 | EMAIL: info@hdvirtualart.com

City
25 Walbrook The Walbrook
Building,
London EC4N 8AF
+4420 7337 4000

Urban living, your way.

jll.co.uk/residential

© 2019 Jones Lang LaSalle IP, Inc. All rights reserved. All information contained herein is from sources deemed reliable; however, no representation or warranty is made to the accuracy thereof.

