

Strand, London WC2R

Price £1,200 per week - Furnished







Description

A stunning 1 bedroom apartment with parking in the sought after 190 Strand, WC2.

Offering approximately 756 sq ft of living space, this spacious 1 bedroom apartment is situated on the 4th floor comprises a large reception area, contemporary open plan kitchen, double bedroom with large fitted wardrobes, contemporary bathroom with marble finish, wood flooring and excellent storage.

The development offers on site leisure facilities, including gymnasium, swimming pool, private cinema, business / conference facilities and 24 hour concierge. The development is situated on the world famous Strand, Westminster WC2, 0.2 miles from Temple station and 0.5 miles from Covent Garden.

Rent is payable on a monthly basis and you may be required to pay more than a month's rent in advance, depending on your circumstances. You will be required to pay a 1 week holding deposit following a successful offer. Utility bills, council tax, telephone line and broadband are not included in the rent. As well as paying the rent, you may also be required to make some additional permitted payments. If your tenancy does not qualify as an AST, additional fees may apply. Please visit jll.co.uk/fees for details of fees which may be payable when ren

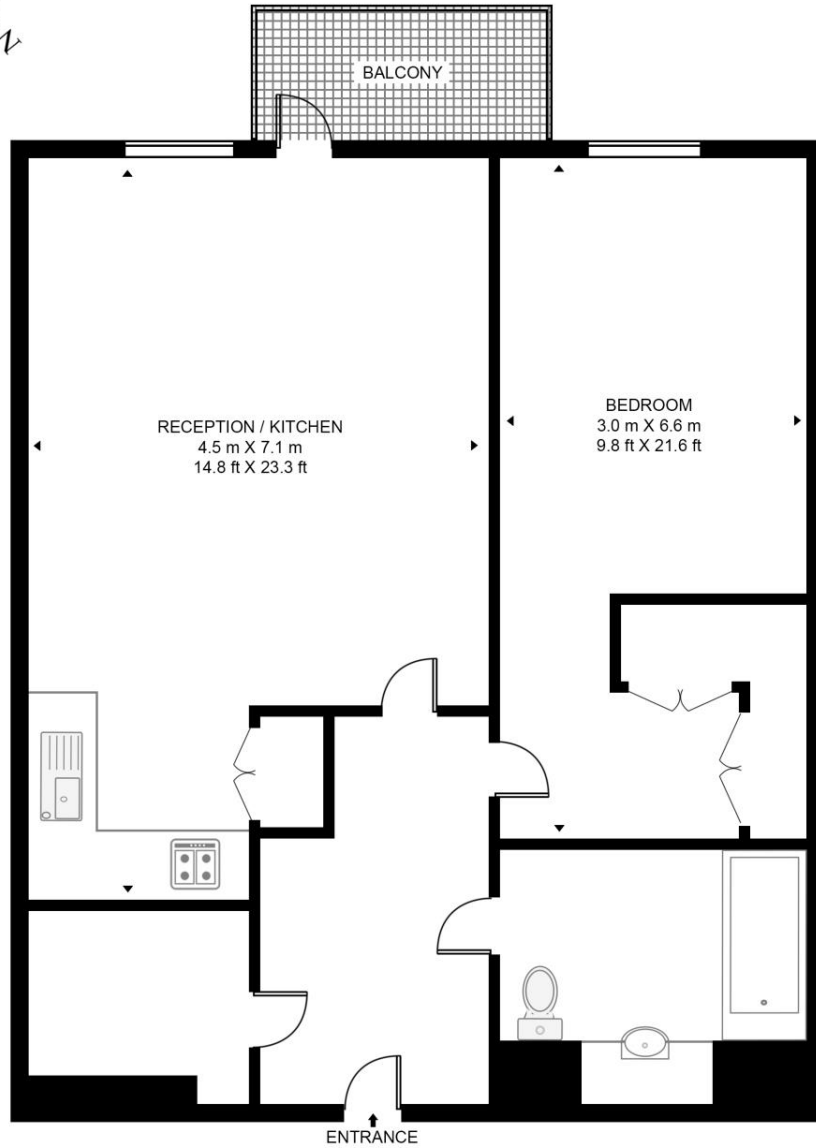
- 1 Bedroom
- 1 Bathroom
- Parking
- 24 hour concierge
- On-site leisure facilities
- 0.2 miles from Temple Station
- Approx. 750 sq ft (69.7 sq m)
- Leasehold
- EPC : B
- Council tax: Band G

Floorplan

750 sq ft | 70 sq m

MILFORD HOUSE, 190 THE STRAND

APPROXIMATE GROSS INTERNAL FLOOR AREA 750 SQ.FT (69.7 SQ.M)



FOURTH FLOOR



This floor plan has been defined by the RICS Code of Measurement. This floor plan and all others are for approximate representative purposes only and upon usage is agreed to as such by the client.
WWW: hdvirtualart.com | TEL: 0203.974.1567 | EMAIL: info@hdvirtualart.com

City
25 Walbrook The Walbrook
Building,
London EC4N 8AF
+4420 7337 4000

Urban living, your way.

jll.co.uk/residential

© 2019 Jones Lang LaSalle IP, Inc. All rights reserved. All information contained herein is from sources deemed reliable; however, no representation or warranty is made to the accuracy thereof.

