



The Heron, London EC2Y

£600,000 Leasehold







Description

Set on the 24th floor, this luxury apartment extends to a well proportioned 547 sq ft, offers a good sized open plan reception room with floor to ceiling windows and skyline views towards the Shard. A spacious double bedroom has a partitioned dressing area fitted wardrobes, whilst a luxury bathroom is offered off a welcoming hallway.

The property has a high specification featuring comfort cooling and smart home technology including iPod docking system.

The development is located in the heart of the City of London and is within easy reach of stations such as Bank (0.5 miles) and Moorgate (0.2 miles). The Heron benefits from an on-site gym, exclusive resident's club and 24 hour concierge.

We understand that cooling / heating is delivered via a communal system for which separate charges apply.

Leasehold 174 years (exp. 21/03/2199)

Ground Rent: £500 pa

Service Charge: £11,560 pa

Council Tax Band: C

EPC Rating: C

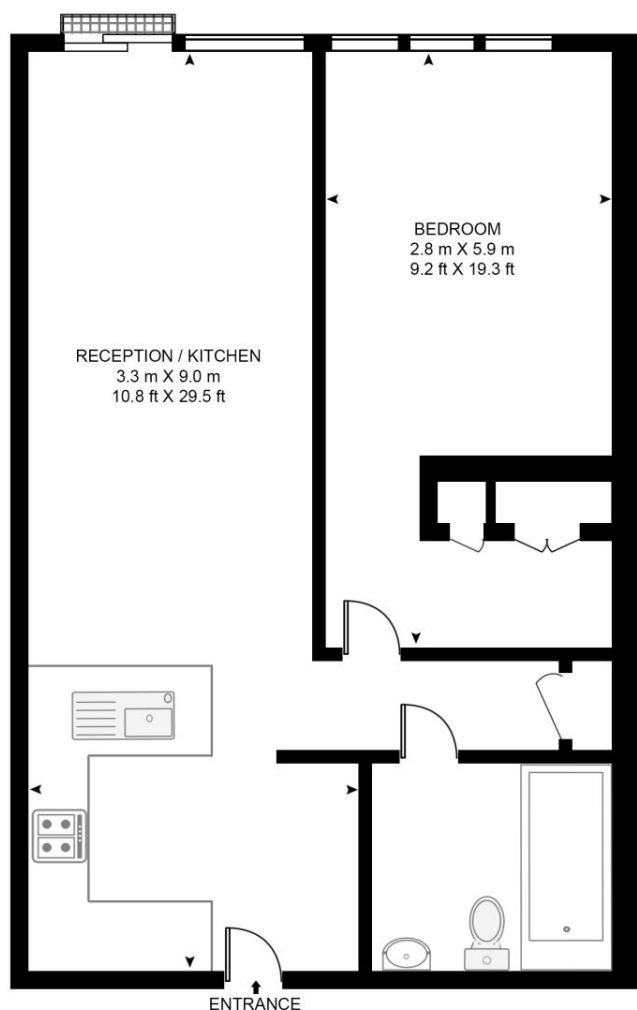
- 1 Bedroom
- 1 Bathroom
- 24th floor skyline views
- Flowing natural light throughout
- Secure underground car parking
- Partitioned dressing area
- 24hr Concierge
- Ideally located
- A host of communal facilities
- Approx. 547 sq ft / 51.5 sq m

Floorplan

547 sq ft | 51 sq m

THE HERON, 5 MOOR LANE

APPROXIMATE GROSS INTERNAL FLOOR AREA 555 SQ.FT (51.5 SQ.M)



TWENTY FOURTH FLOOR

HDVA

This floor plan has been defined by the RICS Code of Measurement. This floor plan and all others are for approximate representative purposes only and upon usage is agreed to as such by the client.

WWW: hdvirtualart.com | TEL: 0203.974.1567 | EMAIL: info@hdvirtualart.com

City
25 Walbrook The Walbrook
Building,
London EC4N 8AF
+4420 7337 4000

Urban living, your way.

jll.co.uk/residential

© 2019 Jones Lang LaSalle IP, Inc. All rights reserved. All information contained herein is from sources deemed reliable; however, no representation or warranty is made to the accuracy thereof.

