

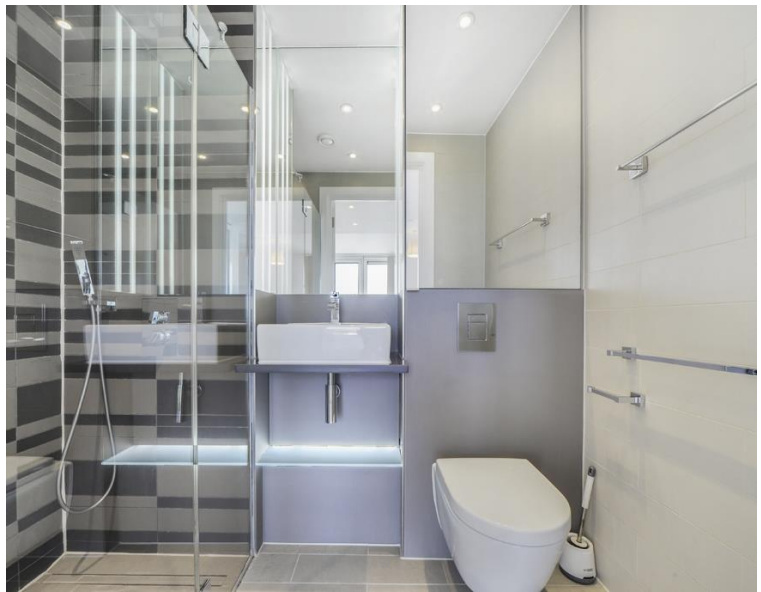


Avantgarde Place, London E1

Asking price £950,000 Leasehold







Description

Based in the stylish hub of Shoreditch, Avantgarde Tower is located in Zone 1, with local transport links such as Shoreditch High Street and Old Street. .

Offering approx. 926 sq ft of living space the apartment has a spacious open plan reception, fully fitted kitchen with Siemens appliances and private balcony. Principal bedroom with fitted wardrobes and en suite, second double bedroom with fitted wardrobes, further bedroom. Contemporary bathroom and excellent storage.

This luxury development has a high specification to include comfort cooling, resident's lounge, on site gym and 24 hour concierge.

Leasehold, EPC: B, Council tax band: F

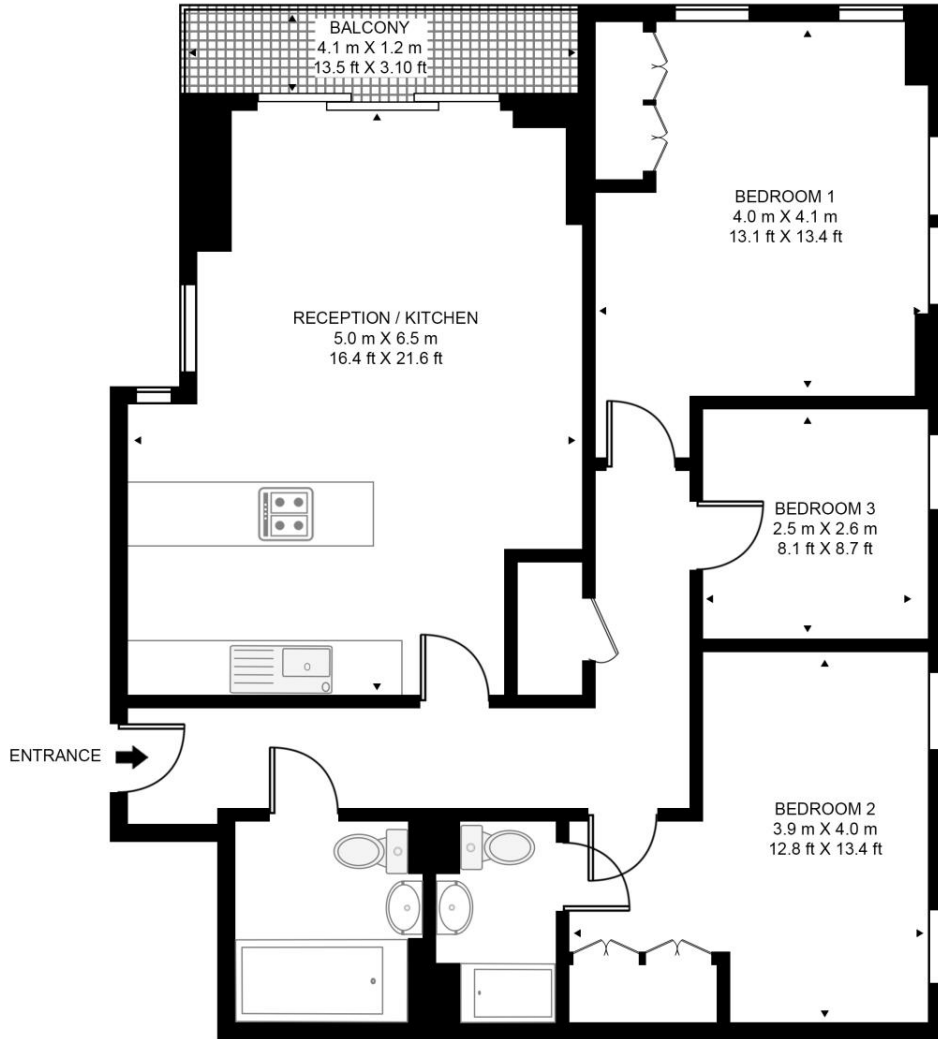
- Bright, 3 Bedroom apartment
- South West facing balcony
- Approx. 926 sq ft
- Well-proportioned rooms
- Dual aspect reception room
- Dual aspect bedroom
- 24 Hour concierge
- Residents gym and lounge
- EPC: B

Floorplan

926 sq ft | 86 sq m

AVANTGARDE TOWER

APPROXIMATE GROSS INTERNAL FLOOR AREA 926 SQ.FT (86 SQ.M)



SIXTEENTH FLOOR



This floor plan has been defined by the RICS Code of Measurement. This floor plan and all others are for approximate representative purposes only and upon usage is agreed to as such by the client.

WWW: hdvirtualart.com | TEL: 0203.974.1567 | EMAIL: info@hdvirtualart.com

City
25 Walbrook The Walbrook
Building,
London EC4N 8AF
+4420 7337 4000

Urban living, your way.

jll.co.uk/residential

© 2019 Jones Lang LaSalle IP, Inc. All rights reserved. All information contained herein is from sources deemed reliable; however, no representation or warranty is made to the accuracy thereof.

