



## City Road, London EC1V

Price £3,700 per week - Furnished







## Description

JLL are very excited to present to the market, The Atlas Building penthouse.

The apartment has been interior designed with a luxury bespoke furniture package, and takes up the entire 38th floor of Old Street's most iconic development, Atlas. The penthouse combines top of the range in home technology, luxury living, breath-taking views, an abundance of internal and external space (approximately 2729 sq ft) and brings together City living at its finest.

Internally, the apartment comprises 3 bedrooms each with luxury en-suite and fitted wardrobes; spacious living room, kitchen and dining area with large balcony, study room, utility room and lots of storage space. Externally, the property boasts two huge terraces and has 360 degree panoramic views of the City skyline, West London, Canary Wharf and towards the Olympic Park.

The Atlas Building is next to Old Street station (0.1 mile) and ideally situated for the City, Hoxton, Shoreditch and Angel. The development offers fantastic amenities which include pool, spa, gymnasium, private cinema room, resident's only business lounge and 24 hour concierge.

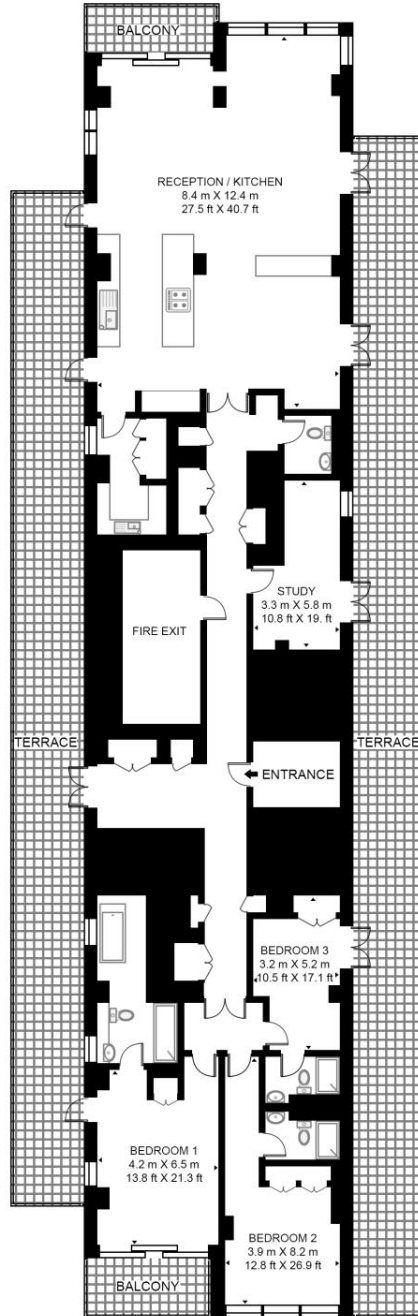
- Penthouse
- 3 Bedrooms
- 4 Bathrooms
- Study
- Entire top (38th) floor of the Atlas Building
- Two Large Terraces
- Two Balconies
- Stunning panoramic views
- High specification
- On-site leisure facilities including pool, spa and cinema

# Floorplan

2,729 sq ft | 254 sq m

## ATLAS BUILDING, 145 CITY ROAD

APPROXIMATE GROSS INTERNAL FLOOR AREA 2729 SQ.FT (253.5 SQ.M)



THIRTY EIGHTH FLOOR

**HDVA**

This floor plan has been defined by the RICS Code of Measurement. This floor plan and all others are for approximate representative purposes only and upon usage is agreed to as such by the client.

WWW: [hdvirtualart.com](http://hdvirtualart.com) | TEL: 0203.974.1567 | EMAIL: [info@hdvirtualart.com](mailto:info@hdvirtualart.com)

City  
25 Walbrook The Walbrook  
Building,  
London EC4N 8AF  
+4420 7337 4000

*Urban living, your way.*

[jll.co.uk/residential](http://jll.co.uk/residential)

© 2019 Jones Lang LaSalle IP, Inc. All rights reserved. All information contained herein is from sources deemed reliable; however, no representation or warranty is made to the accuracy thereof.

