



# Tower Bridge Road, London SE1

Price £795 per week - Furnished







## Description

A great opportunity to rent a 2 bedroom apartment in SE1, situated close to London Bridge and Tower Bridge, on the doorstep of the City of London.

Offered on a furnished basis, the apartment is situated on 7th floor and comprises 2 bedrooms each with fitted wardrobes, 2 luxury en-suite bathrooms, reception room, fully fitted kitchen and Amtico walnut plank flooring throughout living areas and bedrooms. Benefitting Sonos Play One multi-room speaker technology with Sonos Play Bar providing hi-fi quality sound and wireless music streaming to living/dining room (subject to subscription).

Situated at on Tower Bridge Road, the apartment is approximately 0.5 miles from London Bridge Station and approximately 0.4 miles from Tower Bridge and has a 12 hour concierge service.

Rent is payable on a monthly basis and you may be required to pay more than a month's rent in advance, depending on your circumstances. You will be required to pay a 1 week holding deposit following a successful offer. Utility bills, council tax, telephone line and broadband are not included in the rent. As well as paying the rent, you may also be required to make som

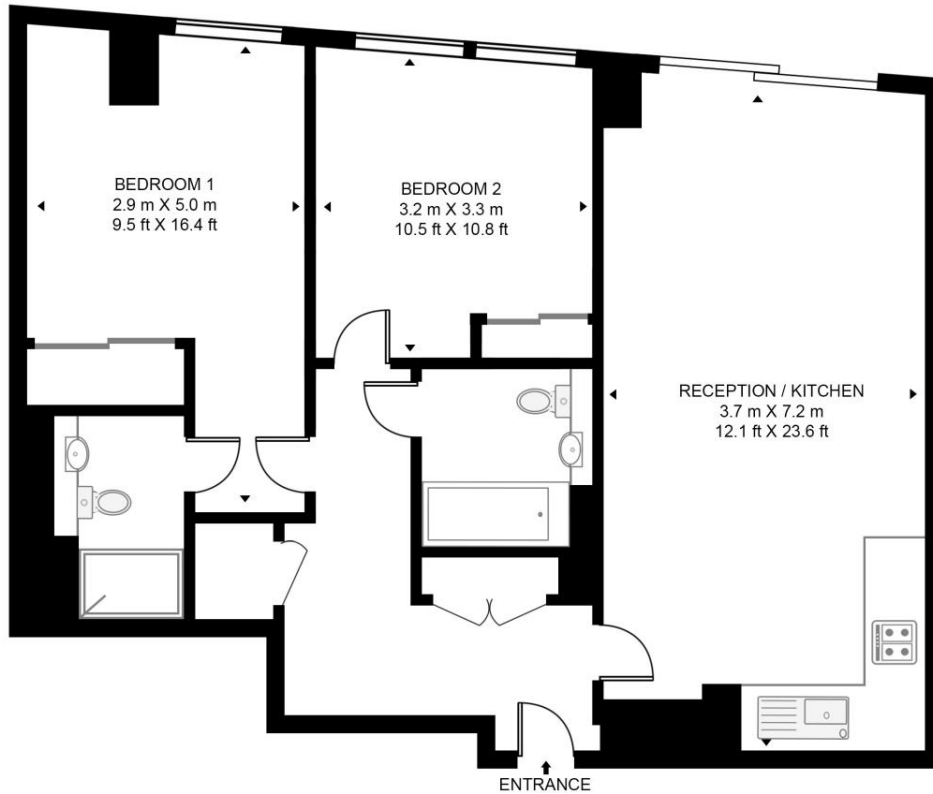
- 2 Bedroom
- 2 Bathroom
- 7th Floor
- On-site concierge
- 0.5 miles from London Bridge Station
- Approx. 780 sq.ft (72.5 sq m)
- Furnished
- EPC: B
- Council tax: Band E
- A holding deposit of 1 week's rent is payable

# Floorplan

780 sq ft | 73 sq m

153 TOWER BRIDGE ROAD

APPROXIMATE GROSS INTERNAL FLOOR AREA 780 SQ.FT (72.5 SQ.M)



SEVENTH FLOOR



This floor plan has been defined by the RICS Code of Measurement. This floor plan and all others are for approximate representative purposes only and upon usage is agreed to as such by the client.  
WWW: [hdvirtualart.com](http://hdvirtualart.com) | TEL: 0203.974.1567 | EMAIL: [info@hdvirtualart.com](mailto:info@hdvirtualart.com)

City  
25 Walbrook The Walbrook  
Building,  
London EC4N 8AF  
+4420 7337 4000

*Urban living, your way.*

[jll.co.uk/residential](http://jll.co.uk/residential)

© 2019 Jones Lang LaSalle IP, Inc. All rights reserved. All information contained herein is from sources deemed reliable; however, no representation or warranty is made to the accuracy thereof.

