

New Oxford Street, London WC1A

Asking price £2,500,000 Leasehold







Description

A wonderful ninth floor apartment, situated in Centre Point, a Landmark building in the heart of the west end.

The apartment comprises of a spacious open plan reception with fully fitted kitchen, master bedroom with en suite shower room and fitted wardrobes, second double bedroom with en suite bathroom and fitted wardrobes, guest cloakroom, excellent storage.

In an excellent central location for the theatres of West End, the shops of Oxford Street and the restaurants of Soho, Centre Point has excellent residents facilities including a 24 hour concierge, 30 metre infinity pool, spa, gym, cinema room and residents lounge.

Centre Point Residences benefits from being situated at the intersection of the four most iconic neighbourhoods, Bloomsbury, Fitzrovia, Covent Garden and Soho and is right next to Tottenham Court Road station boasting the Crossrail connection which enables travel to Heathrow in under 30 minutes.

Leasehold, EPC: ,

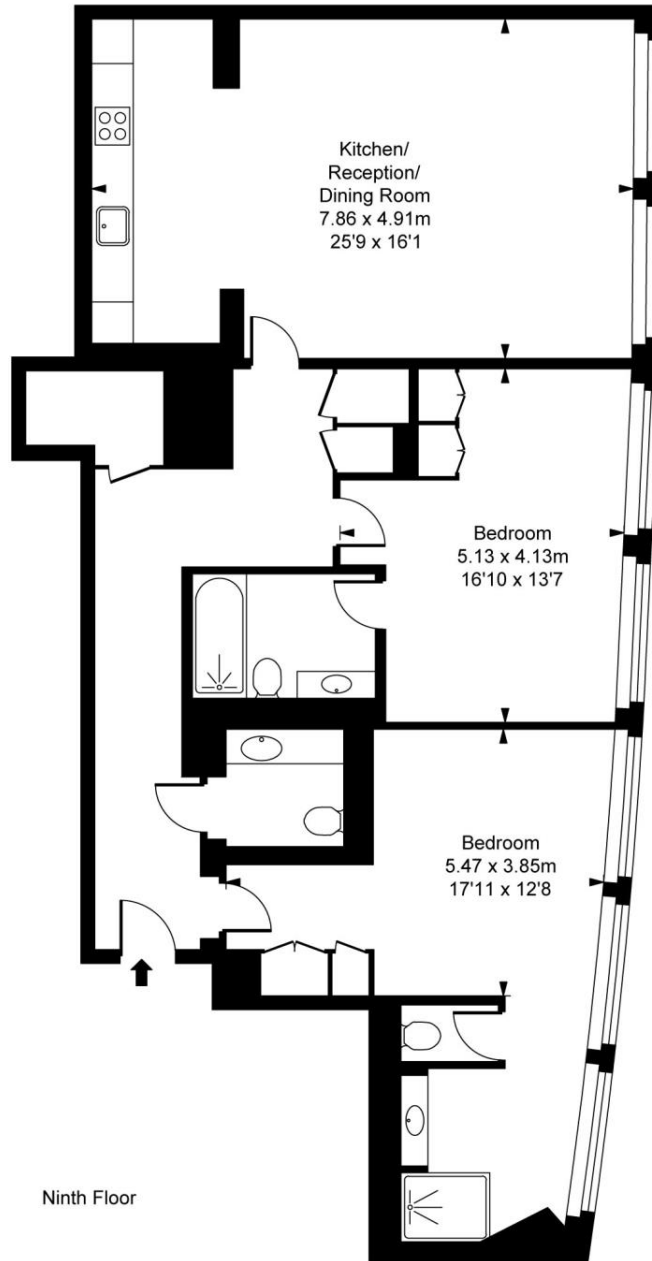
- 2 Bedrooms
- 2 Bathrooms + WC
- 24 Hour Concierge
- Residents 30 metre pool
- Residents spa facilities
- Residents cinema
- Residents Lounge and meeting rooms
- Approx. 1253 sq ft (116.41 sq m)
- Leasehold
- EPC: ,

Floorplan

1,253 sq ft | 116 sq m



Centre Point,
St Giles High Street, WC1H
Approximate Gross Internal Area
116.41 sq m / 1,253 sq ft



This plan is not to scale. It is for guidance and not for valuation purposes.
All measurements and areas are approximate only, and have been prepared in accordance with the current edition of the RICS Code of Measuring Practice.
© Fulham Performance

City
25 Walbrook The Walbrook
Building,
London EC4N 8AF
+4420 7337 4000

Urban living, your way.

jll.co.uk/residential

© 2019 Jones Lang LaSalle IP, Inc. All rights reserved. All information contained herein is from sources deemed reliable; however, no representation or warranty is made to the accuracy thereof.

