

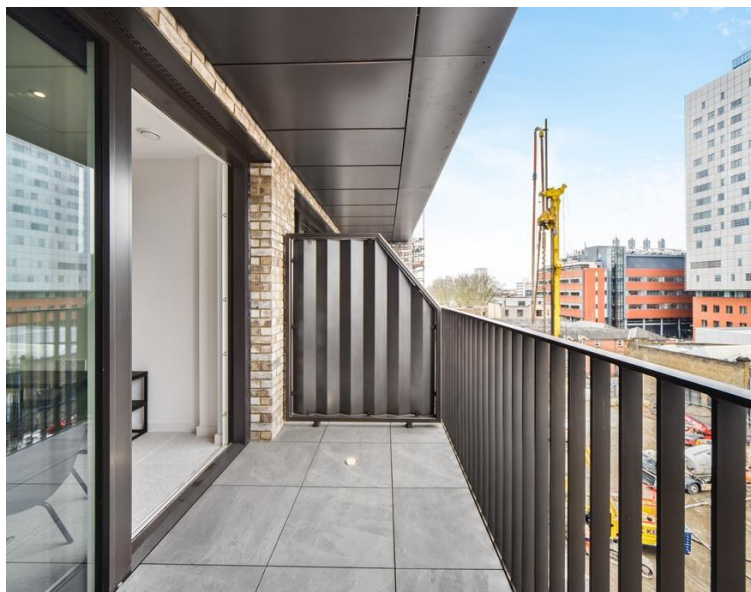


Cendal Crescent, London E1

Price £570 per week - Furnished







Description

JLL are delighted to present this furnished 1 bedroom apartment in Georgette Apartments, the Silk District.

This furnished apartment is situated on the 5th floor and boasts open plan living / dining area, large balcony, double bedroom with large fitted wardrobes, luxury bathroom, fully fitted kitchen with Oak effect finish, tiled flooring and excellent storage space.

The Silk District is a development from Mount Anvil and offers residents fantastic amenities which include 24 hour concierge, on site gym, cinema room, rooftop gardens and resident's lounge. The development is within easy reach of the City of London and in the heart of the Whitechapel regeneration area, approximately 0.3 miles from Whitechapel Underground / Crossrail station.

As well as paying the rent, you may also be required to make the following permitted payments. If your tenancy does not qualify as an AST, additional fees may apply. Please visit jll.co.uk/fees for details of fees which may be payable when renting a property.

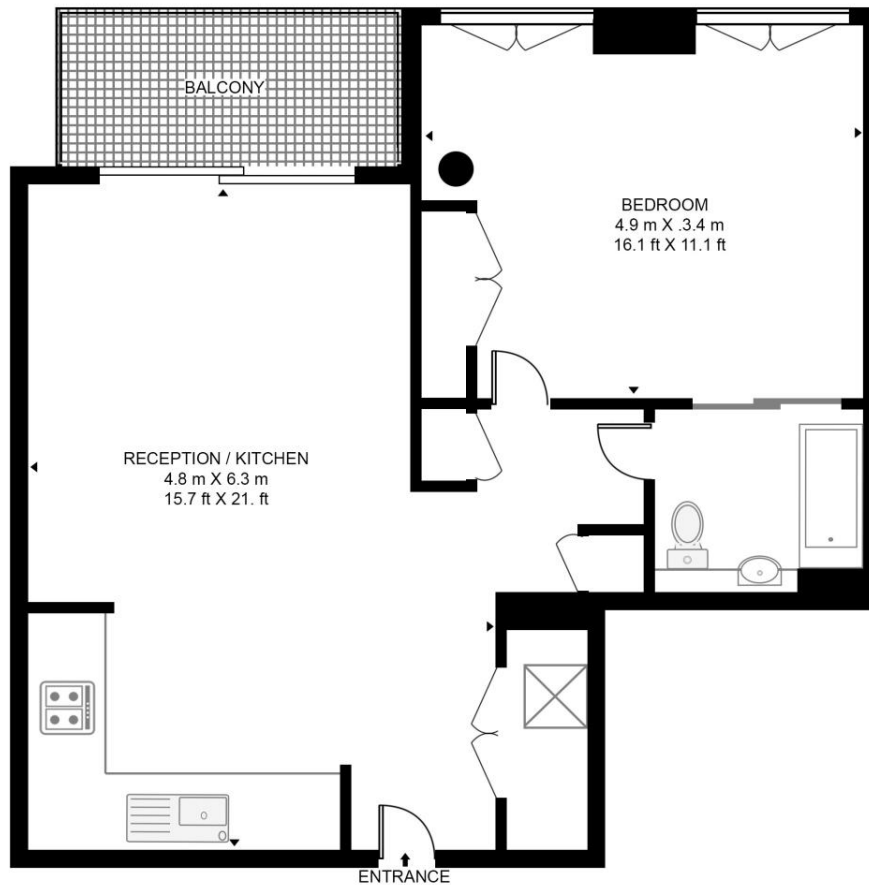
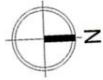
- 1 Bedroom
- 1 Bathroom
- 5th Floor
- Balcony
- On-site amenities including cinema, gym and resident's lounge
- 24 hour concierge
- 0.3 miles from Whitechapel Station
- Approx. 603 sq ft (56.0 sq m)
- Furnished
- EPC: B

Floorplan

603 sq ft | 56 sq m

GEORGETTE APARTMENTS, SILK DISTRICT

APPROXIMATE GROSS INTERNAL FLOOR AREA 603 SQ.FT (56 SQ.M)



HDVA

This floor plan has been defined by the RICS Code of Measurement. This floor plan and all others are for approximate representative purposes only and upon usage is agreed to as such by the client.

WWW: hdvirtualart.com | TEL: 0203.974.1567 | EMAIL: info@hdvirtualart.com

City
25 Walbrook The Walbrook
Building,
London EC4N 8AF
+4420 7337 4000

Urban living, your way.

jll.co.uk/residential

© 2019 Jones Lang LaSalle IP, Inc. All rights reserved. All information contained herein is from sources deemed reliable; however, no representation or warranty is made to the accuracy thereof.

