



City Road, London EC1V

Price £675 per week - Furnished





Description

A fully furnished 1 bedroom apartment in the Atlas Building, situated next to Old Street, EC1.

This well presented 1 bedroom apartment offers approximately 545 sq ft of living space and comprises a large open plan reception with fully fitted kitchen, large West facing balcony, bedroom with large fitted wardrobe, luxury bathroom with Porcelain finish and solid wood flooring.

The development offers top of the range amenities which includes pool, spa, gymnasium, private cinema room, resident's only business lounge and 24 hour concierge. Each apartment also benefits from comfort cooling / heating. The Atlas Building is next to Old Street station (0.1 mile) and a short walk to the City, Hoxton, Shoreditch and Angel.

We understand that cooling / heating is delivered via a communal system for which separate charges apply.

Rent is payable on a monthly basis and you may be required to pay more than a month's rent in advance, depending on your circumstances. You will be required to pay a 1 week holding deposit following a successful offer. Utility bills, council tax, telephone line and broadband are not included in the rent. As well as paying the rent, you may also be required to make some additional permitted payments. If your tenancy does not qualify as an AST, additional fees may apply. Please visit jll.co.uk/fees for details of fees which may be payable when renting a property.

- 1 Bedroom
- 1 Bathroom
- 5th floor
- Private balcony
- On-site leisure facilities including pool, spa and cinema
- 24 hour concierge
- 0.1 miles from Old Street Station
- Approx. 523.4 sq ft (48.6 sq m)
- Furnished
- EPC: B



Floorplan

523 sq ft | 49 sq m

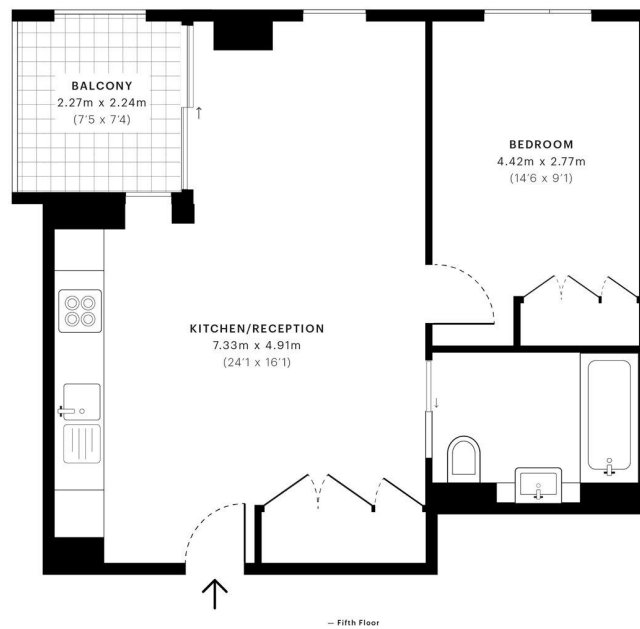


City Road, EC1V

CAPTURE DATE
11/07/2019

LASER SCAN POINTS
18,821,290

GROSS INTERNAL AREA
48.6 Sqm / 523.4 Sqft



GROSS INTERNAL AREA
The footprint of the property
48.6 Sqm / 523.4 Sqft

NET AREA (INTERNAL)
Excludes walls and internal features
47.2 Sqm / 508.1 Sqft

EXTERNAL STRUCTURAL FEATURES
Balconies, terraces, verandas, etc.
5.1 Sqm / 54.4 Sqft

RESTRICTED HEAD HEIGHT
Limited use area under 1.5m
0.0 Sqm / 0.0 Sqft



Spec floor plans are produced in accordance with the Royal Institution of Chartered Surveyors' Property Measurement Standards. Plots and gardens are illustrative only and are excluded from all area calculations. Due to rounding, numbers may not add up precisely.



IPMS 3B RESIDENTIAL
54.2 Sqm / 582.9 Sqft
IPMS 3C RESIDENTIAL
52.7 Sqm / 567.6 Sqft

SPEC ID
5d248ds01820bd0a0ffe8f14

City
25 Walbrook The Walbrook
Building,
London EC4N 8AF
+4420 7337 4000

Urban living, your way.

jll.co.uk/residential

© 2019 Jones Lang LaSalle IP, Inc. All rights reserved. All information contained herein is from sources deemed reliable; however, no representation or warranty is made to the accuracy thereof.

