



Ratcliffe Cross Street, London E1

Price £485 per week - Furnished







Description

A well-presented 1 bedroom apartment in the located close to Limehouse Station.

Situated on the 4th floor, the apartment is offered fully furnished and comprises spacious reception area with semi-open plan fitted kitchen, 1 double bedroom with fitted wardrobes, large balcony, contemporary bathroom and wood flooring.

Wheeler's House is ideally located for Limehouse station (0.1 miles)

Rent is payable on a monthly basis and you may be required to pay more than a month's rent in advance, depending on your circumstances. You will be required to pay a 1 week holding deposit following a successful offer. Utility bills, council tax, telephone line and broadband are not included in the rent. As well as paying the rent, you may also be required to make some additional permitted payments. If your tenancy does not qualify as an AST, additional fees may apply. Please visit jll.co.uk/fees for details of fees which may be payable when renting a property.

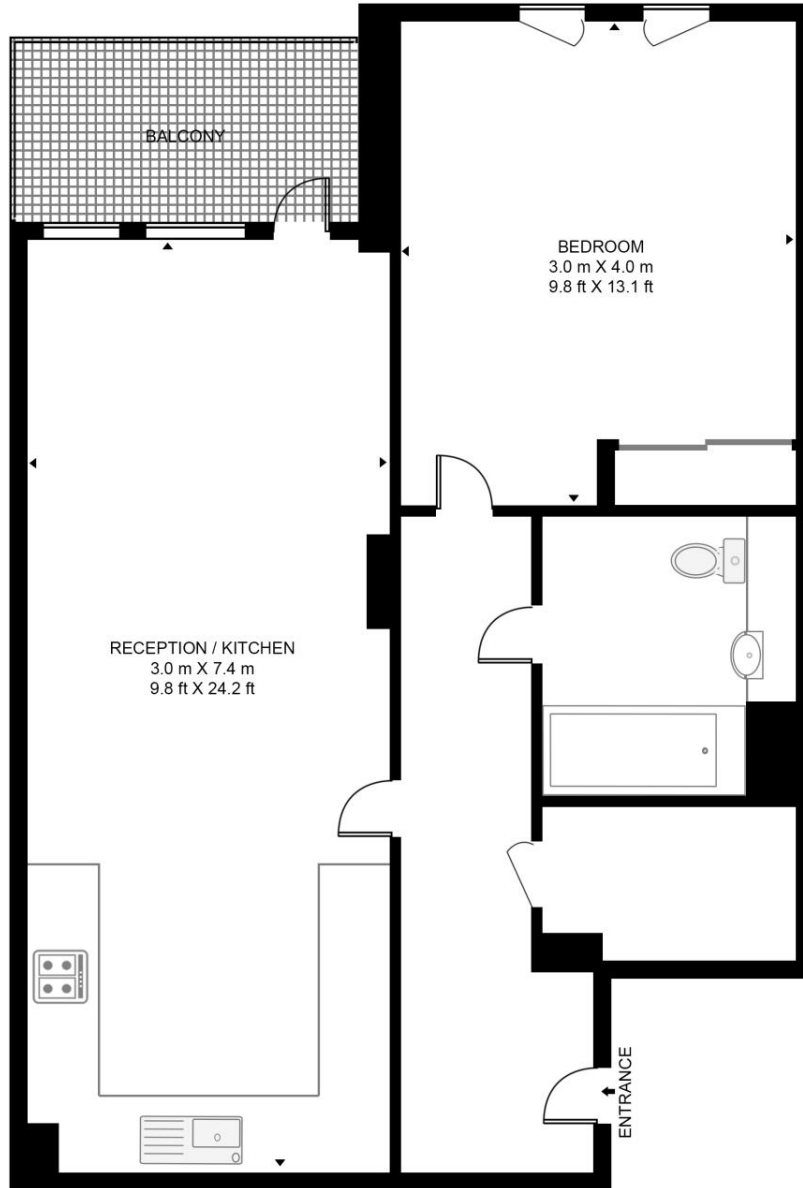
- One double bedroom
- Spacious reception area
- Open plan fitted kitchen
- Bathroom
- Large balcony
- Wood flooring
- Furnished
- Approx: 535 sq ft (49.7 sq m)
- EPC: B
- Council tax: Band D

Floorplan

535 sq ft | 50 sq m

WHEELERS HOUSE

APPROXIMATE GROSS INTERNAL FLOOR AREA 535 SQ.FT (49.7 SQ.M)



FOURTH FLOOR



This floor plan has been defined by the RICS Code of Measurement. This floor plan and all others are for approximate representative purposes only and upon usage is agreed to as such by the client.
WWW: hdvirtualart.com | TEL: 0203.974.1567 | EMAIL: info@hdvirtualart.com

City
25 Walbrook The Walbrook
Building,
London EC4N 8AF
+4420 7337 4000

Urban living, your way.

jll.co.uk/residential

© 2019 Jones Lang LaSalle IP, Inc. All rights reserved. All information contained herein is from sources deemed reliable; however, no representation or warranty is made to the accuracy thereof.

