



## Moor Lane, London EC2Y

Price £620 per week - Furnished







## Description

A luxury Galley Suite on the 18th floor of the prestigious Heron development.

This luxury apartment offers a well sized reception area with West facing balcony, partitioned sleeping area with a desk / working space, open plan, fully fitted kitchen, Walnut flooring throughout and luxury shower room. The property has a high specification with comfort cooling, iPod docking system, ceiling speakers and central control panel.

The development is located in the heart of the City of London and is within easy reach of stations such as Bank (0.5 miles) and Moorgate (0.2 miles). The Heron benefits from an on-site gym, exclusive resident's club, 24 hour security and concierge. Offered fully furnished.

We understand that cooling / heating is delivered via a communal system for which separate charges apply.

Rent is payable on a monthly basis and you may be required to pay more than a month's rent in advance, depending on your circumstances. You will be required to pay a 1 week holding deposit following a successful offer. Utility bills, council tax, telephone line and broadband are not included in the rent. As w

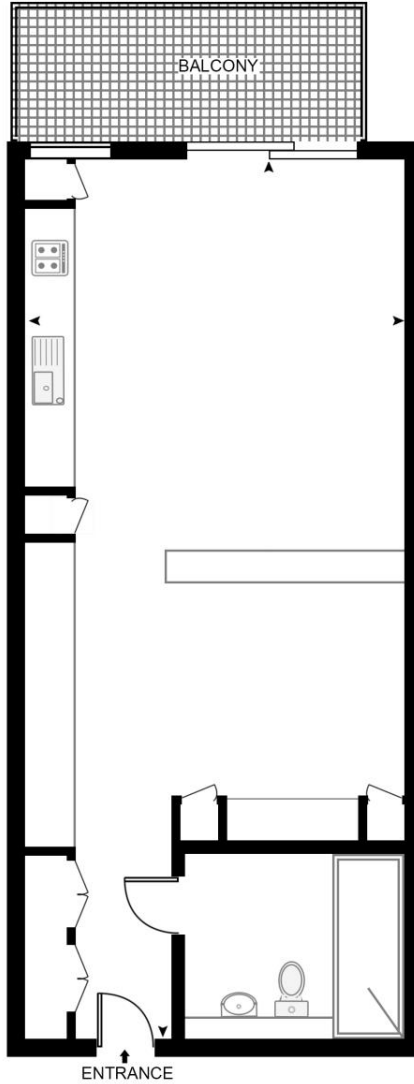
- Studio
- 1 Bathroom
- 18th floor
- West facing balcony
- 24 hour concierge
- On-site leisure facilities including gym, pool and cinema
- 0.2 miles from Moorgate station
- Approx. 426 sq ft (39.6 sq m)
- Furnished
- EPC: C

# Floorplan

426 sq ft | 40 sq m

## THE HERON, MOOR LANE

APPROXIMATE GROSS INTERNAL FLOOR AREA 426 SQ.FT (39.6 SQ.M)



EIGHTEENTH FLOOR



This floor plan has been defined by the RICS Code of Measurement. This floor plan and all others are for approximate representative purposes only and upon usage is agreed to as such by the client.  
WWW: [hdvirtualart.com](http://hdvirtualart.com) | TEL: 0203.974.1567 | EMAIL: [info@hdvirtualart.com](mailto:info@hdvirtualart.com)

City  
25 Walbrook The Walbrook  
Building,  
London EC4N 8AF  
+4420 7337 4000

*Urban living, your way.*

[jll.co.uk/residential](http://jll.co.uk/residential)

© 2019 Jones Lang LaSalle IP, Inc. All rights reserved. All information contained herein is from sources deemed reliable; however, no representation or warranty is made to the accuracy thereof.

