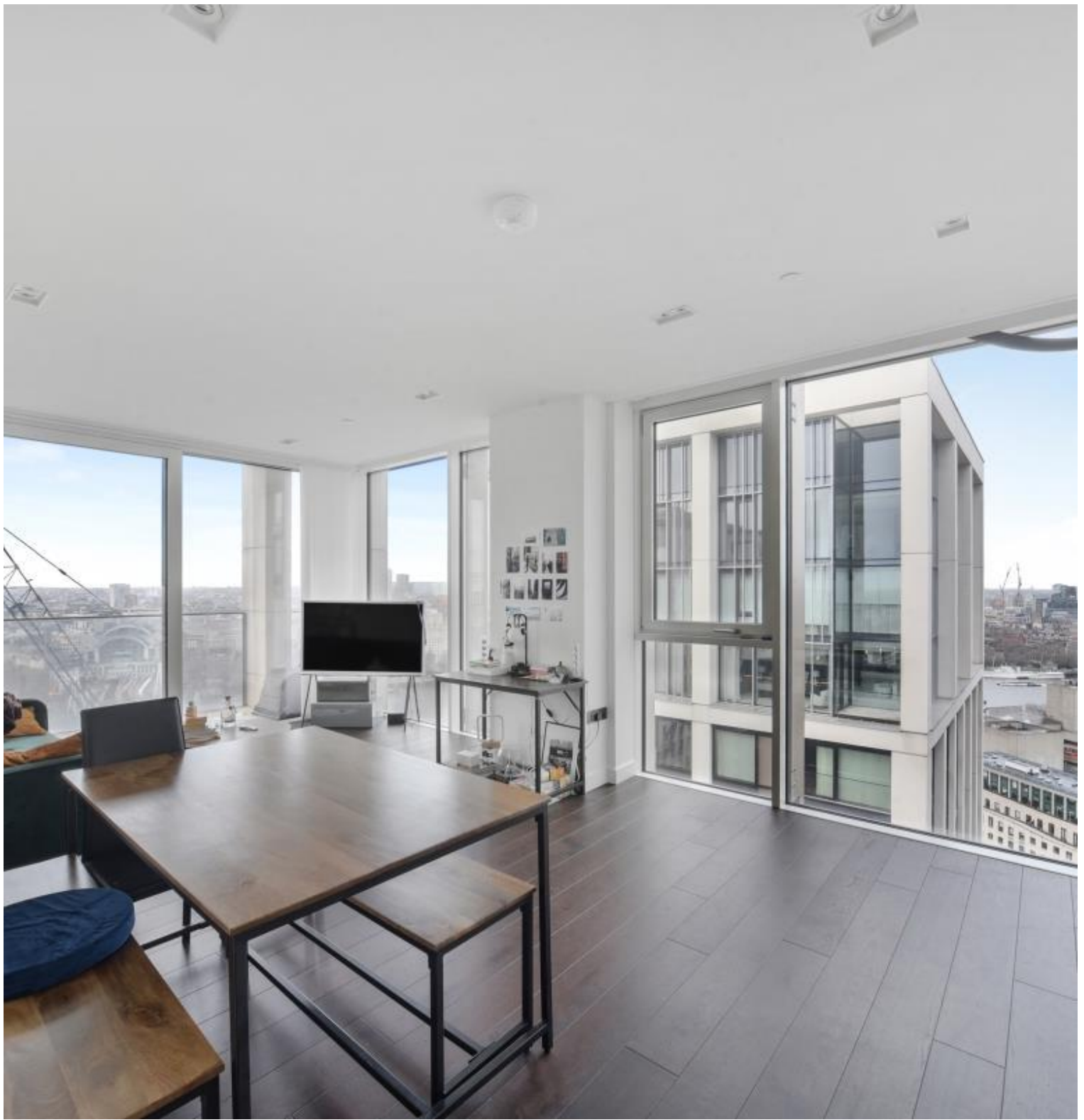


## Southbank Place, London SE1

Price £1,400 per week - Furnished







## Description

A luxurious 2 bedroom apartment in the sought after 8 Casson Square a luxury development moments from Waterloo Station, SE1.

This double aspect 2 bedroom apartment is situated on the 27th floor and boasts stunning views towards the London Eye and the river. The apartment comprises 2 double bedrooms with large fitted wardrobes to each, living area with a fully fitted open plan kitchen to include Miele and Siemens appliances, balcony with stunning views, wood flooring and excellent storage space. The property has a high specification throughout featuring comfort cooling, underfloor heating and smart home technology.

The development benefits from top of the range amenities which include an on-site gym, swimming pool with spa, exclusive resident's lounge and 24-hour concierge. 8 Casson Square is in the heart of Southbank and on the doorstep of Waterloo Station (0.2 miles) and moments from the iconic London Eye. The City of London is within easy reach as is London's famous West End.

We understand that cooling / heating is delivered via a communal system for which separate charges apply.

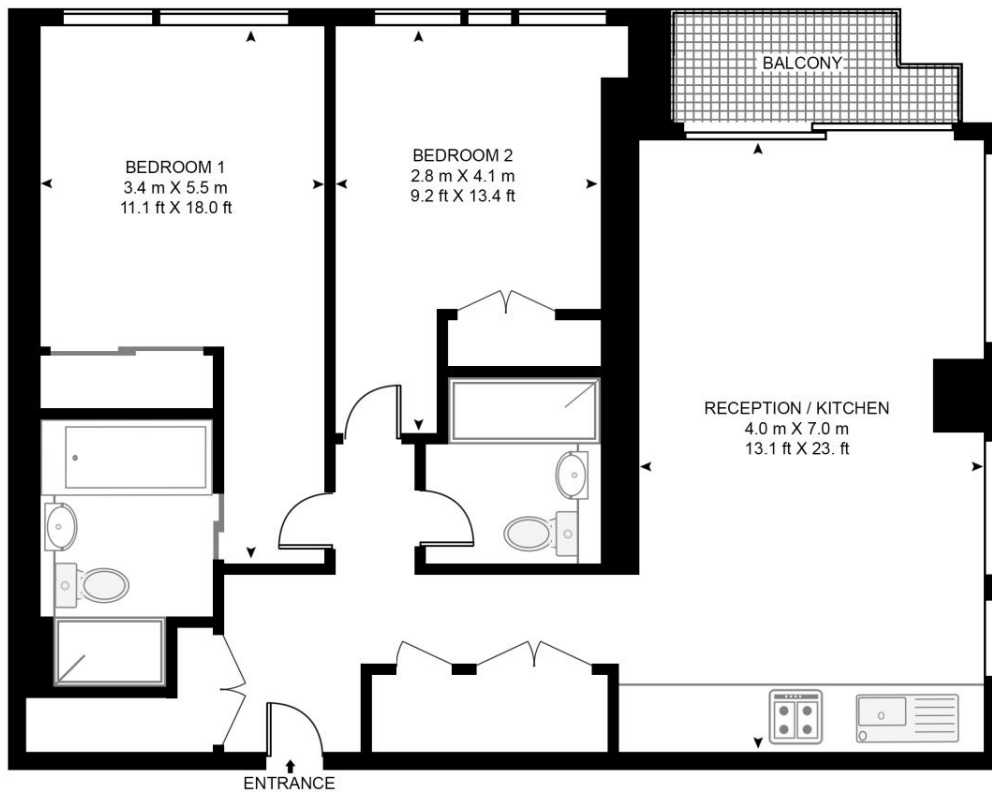
- 2 Bedrooms
- 2 Bathrooms
- 27th floor
- Balcony with stunning views
- Underfloor heating
- Furnished
- 24 hour concierge
- On-site leisure facilities including spa, cinema and gym
- 0.2 miles from Waterloo Station
- Approx. 875 sq ft (81.3 sq m)

# Floorplan

875 sq ft | 81 sq m

## 8 CASSON SQUARE

APPROXIMATE GROSS INTERNAL FLOOR AREA 875 SQ.FT (81.3 SQ.M)



## TWENTY SEVENTH FLOOR



This floor plan has been defined by the RICS Code of Measurement. This floor plan and all others are for approximate representative purposes only and upon usage is agreed to as such by the client.  
WWW: [hdvirtualart.com](http://hdvirtualart.com) | TEL: 0203.974.1567 | EMAIL: [info@hdvirtualart.com](mailto:info@hdvirtualart.com)

City  
25 Walbrook The Walbrook  
Building,  
London EC4N 8AF  
+4420 7337 4000

*Urban living, your way.*

[jll.co.uk/residential](http://jll.co.uk/residential)

© 2019 Jones Lang LaSalle IP, Inc. All rights reserved. All information contained herein is from sources deemed reliable; however, no representation or warranty is made to the accuracy thereof.

