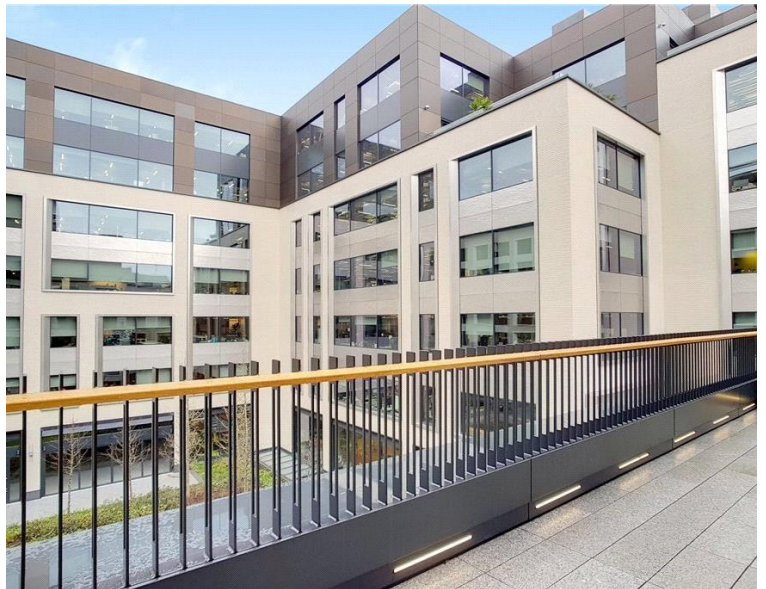
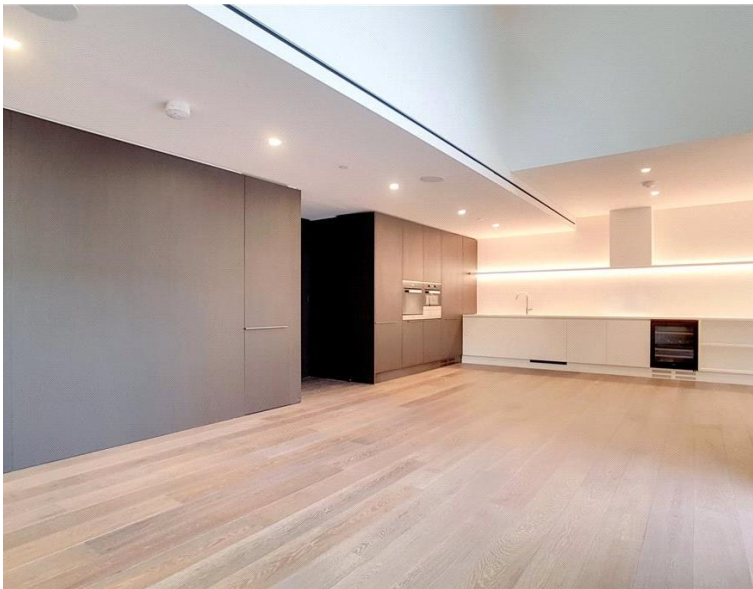
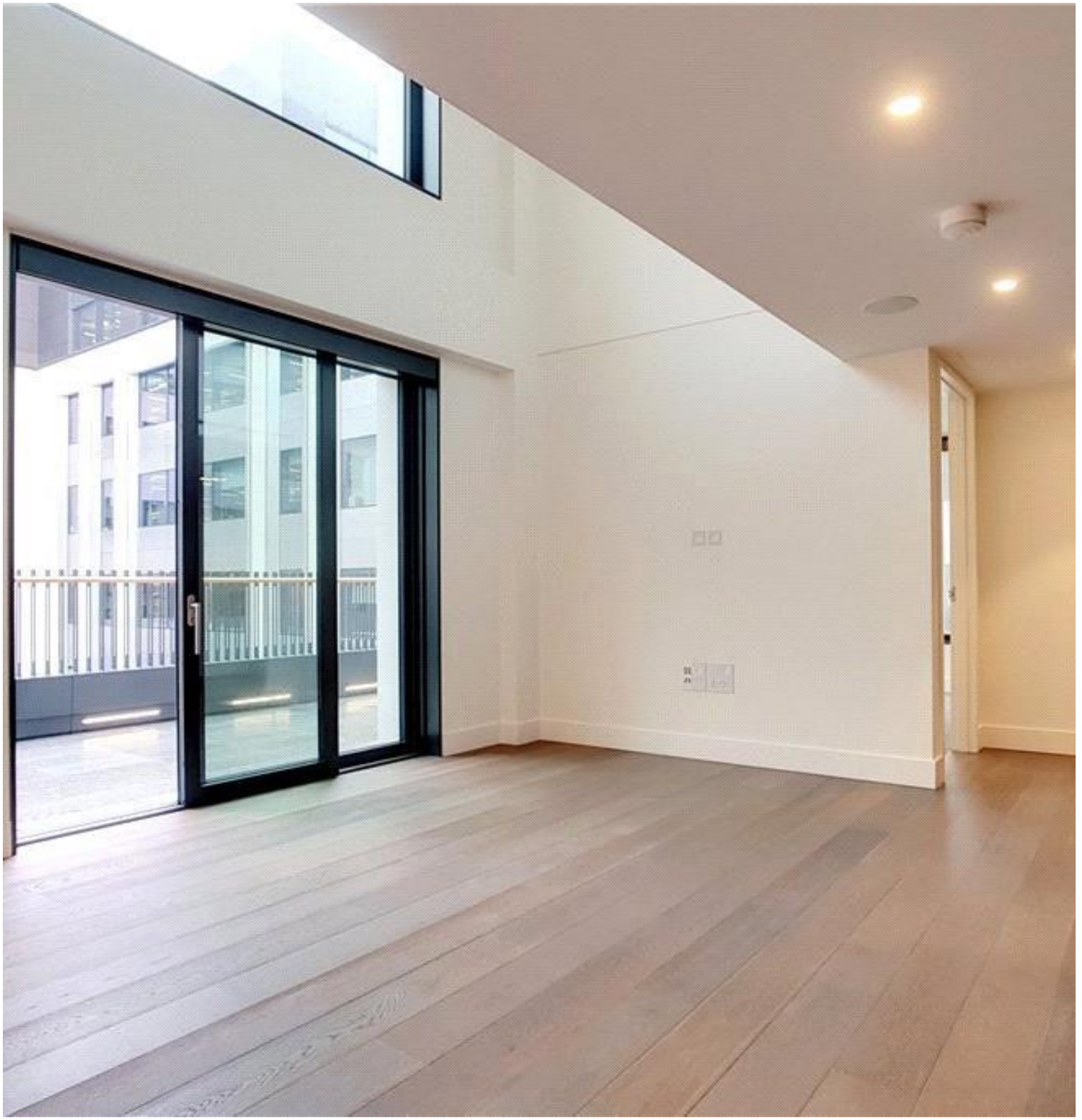


Rathbone Place, London W1T

Guide price £3,500,000 Leasehold







Description

On the 3rd and 4th floor this three bedroom duplex apartment with private terrace boasts approx. 1492 sq ft of living space.

The apartment comprises an open plan reception room with fully fitted kitchen, private terrace, master bedroom with dressing area and en-suite bathroom, second double bedroom with fitted wardrobes and en-suite bathroom, third double bedroom, separate shower room.

Residents have use of the 24 hour concierge, access to beautiful gardens, residents' gym, swimming pool, sauna and steam room, screening room, lounge, wine storage and tasting room. Rathbone Square has been designed to offer a tranquil environment, whilst being ideally located moments from Oxford Street.

Situated in the heart of London's West End, ideal for transport links in and around London, with The City and West London being just 10 minutes away via the underground.

- Modern Development
- Duplex Apartment
- Private terrace
- 24 Hour concierge
- Residents gym
- Residents pool and spa
- Residents screening room
- Approx. 1,492 sq ft (138 sq m)

Floorplan

1,492 sq ft | 139 sq m



This floor plan was captured for JLL, knightsbridge on 12/03/2018. Architectural features to scale, derived from millions of laser scan points, accurate to +/- 3cm and produced in accordance with the Royal Institute of Chartered Surveyors Property Measurement standards. Gross Internal Area is measured from the internal faces of external walls and includes internal walls/obstructions. Net Internal Area excludes internal walls/obstructions. Please perform your own checks before relying on these figures in any transaction.



City
25 Walbrook The Walbrook
Building,
London EC4N 8AF
+4420 7337 4000

Urban living, your way.

jll.co.uk/residential

© 2019 Jones Lang LaSalle IP, Inc. All rights reserved. All information contained herein is from sources deemed reliable; however, no representation or warranty is made to the accuracy thereof.

