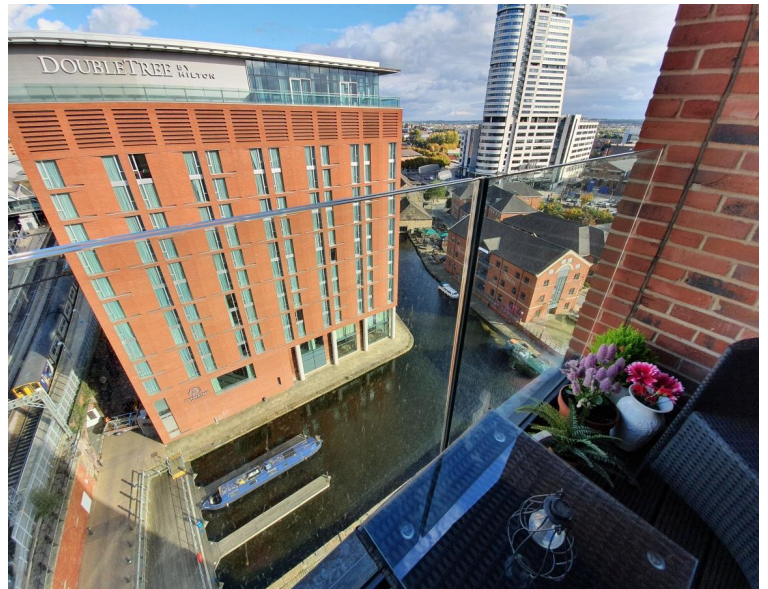




Candle House, Leeds LS1

Asking price £187,500 Leasehold







Description

A one bedroom apartment within Candle House; a striking cylindrical tower at Granary Wharf, a waterside development offering direct access to Leeds station and consisting of two residential buildings, a hotel and a number of amenities including shops and restaurants.

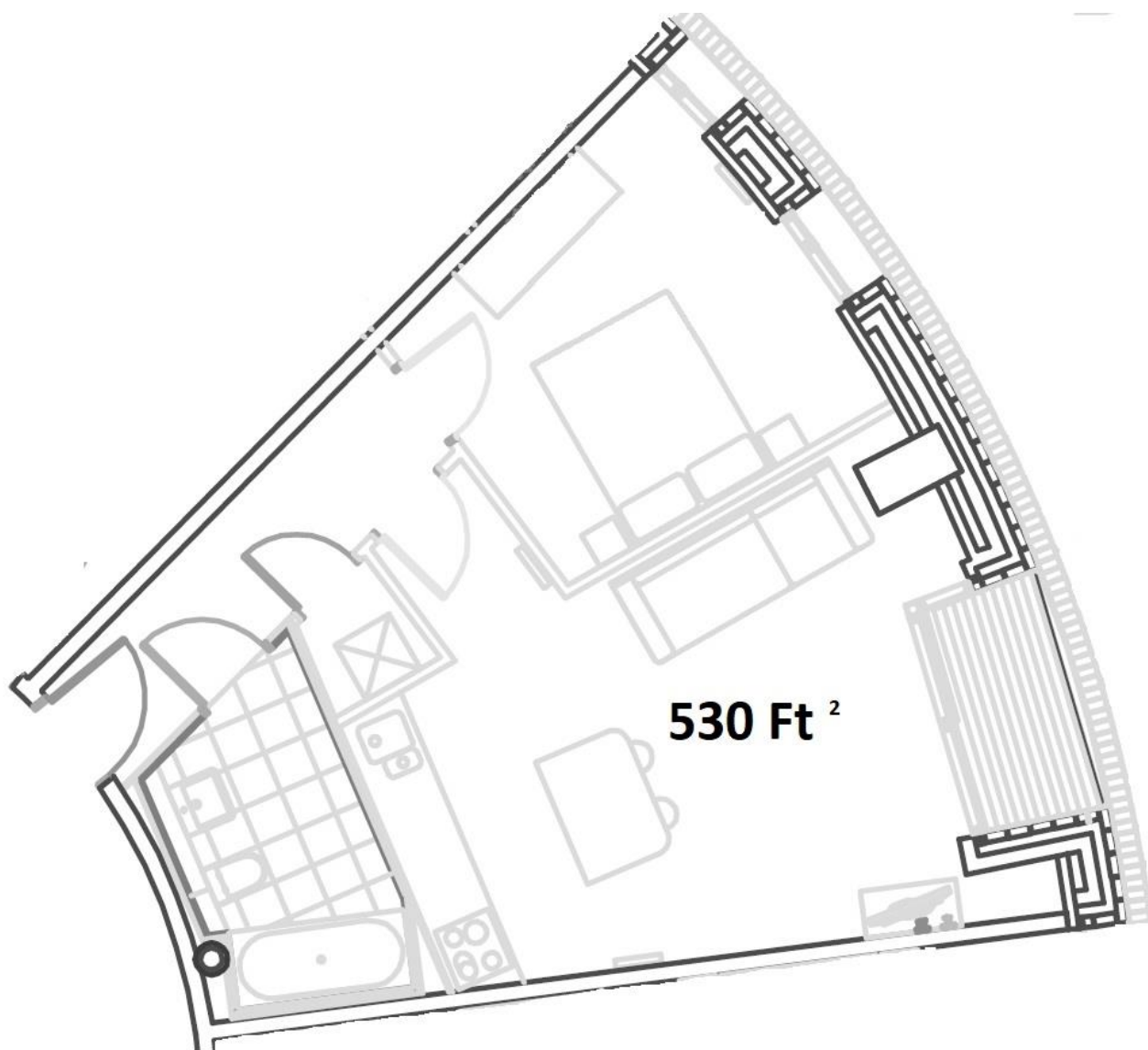
This very well presented 11th floor one bedroom apartment extends to approximately 530 square feet and benefits from a well-designed kitchen with granite worktops throughout and benefiting from a range of integrated NEFF appliances including fridge with separate freezer, dishwasher, microwave and useful island unit. There is a balcony off the living area with views across the city; residents also have exclusive use of the 21st floor communal roof terrace.

Lease Length: 250 Years from 1st January 2007
Service charge: £2036 Per Annum
Ground rent: £275 Per Annum

- 1 bedroom and 1 bathroom
- Brand new flooring and fully redecorated
- Balcony
- Sought after waterfront location
- Communal roof garden
- 11th floor
- 530 sq ft
- Leasehold
- EPC: B

Floorplan

530 sq ft | 49 sq m



Leeds
32 Park Place,
Leeds LS1 2SP
0113 205 3333

Urban living, your way.

jll.co.uk/residential

© 2019 Jones Lang LaSalle IP, Inc. All rights reserved. All information contained herein is from sources deemed reliable; however, no representation or warranty is made to the accuracy thereof.

