



Candle House, Leeds LS1

Asking price £249,950 Freehold







Description

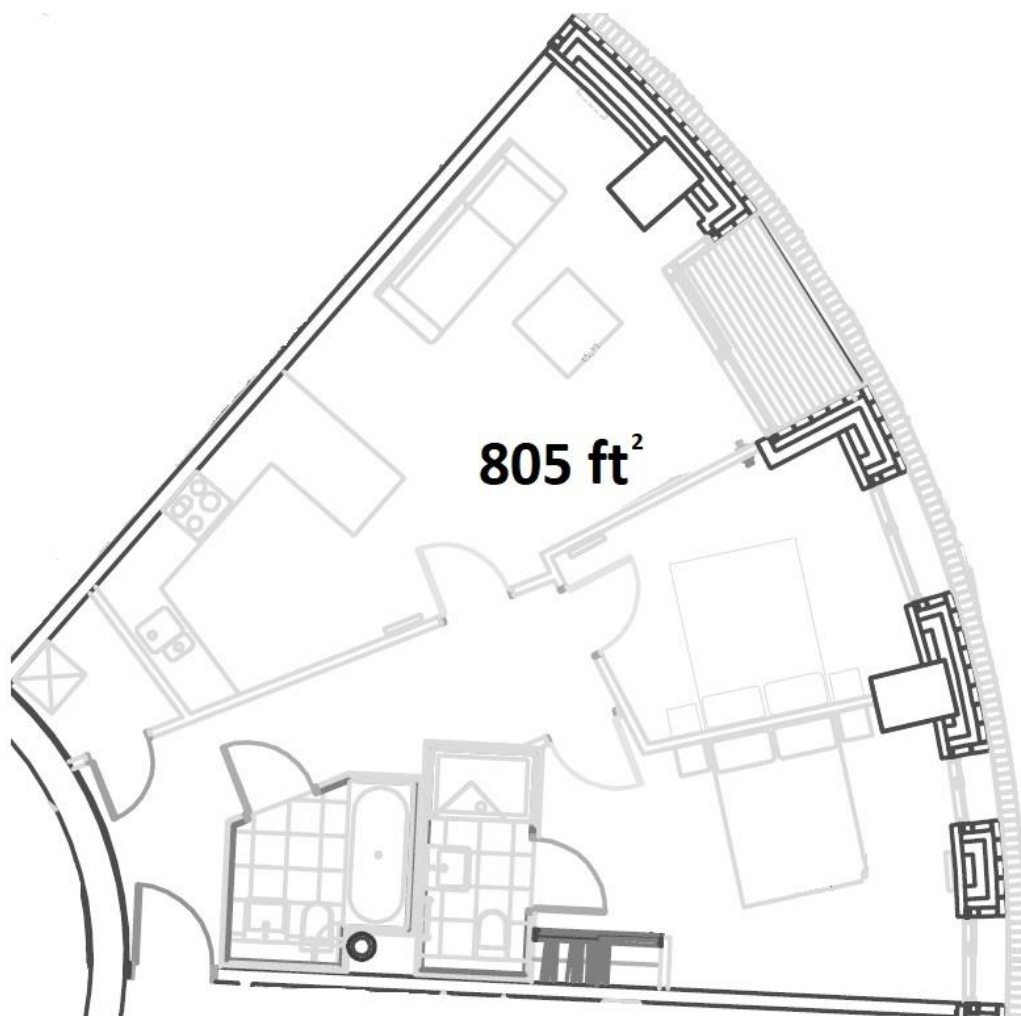
A two bedroom and two bathroom apartment on the 7th floor of the highly sought after Candle House a striking 21 floor cylindrical tower positioned at the edge of the canal and docks. Leeds train station is only 200 metres from the building and can be accessed via the southern entrance providing direct access from the development. This spacious apartment measures in excess of 800 ft². There are floor to ceiling windows throughout offering views towards the city. The high specification kitchen has a breakfast bar with granite work tops and NEFF integrated appliances including separate fridge and freezer, integrated dishwasher and microwave. The building also boasts a large communal roof terrace offering spectacular panoramic views of the city.

Ground Rent: £275 Per Annum
 Service charge: Approx. £3000 Per Annum
 Lease length: Lease 250 Years from 1st January 2007

- 2 Bedrooms
- 2 Bathrooms
- Ensuite recently re-tiled
- Adjacent to canal
- Balcony
- Communal roof terrace
- Approx. 805 sq ft
- Leasehold
- EPC:-B

Floorplan

805 sq ft | 75 sq m



Leeds
32 Park Place,
Leeds LS1 2SP
0113 205 3333

Urban living, your way.

jll.co.uk/residential

© 2019 Jones Lang LaSalle IP, Inc. All rights reserved. All information contained herein is from sources deemed reliable; however, no representation or warranty is made to the accuracy thereof.

