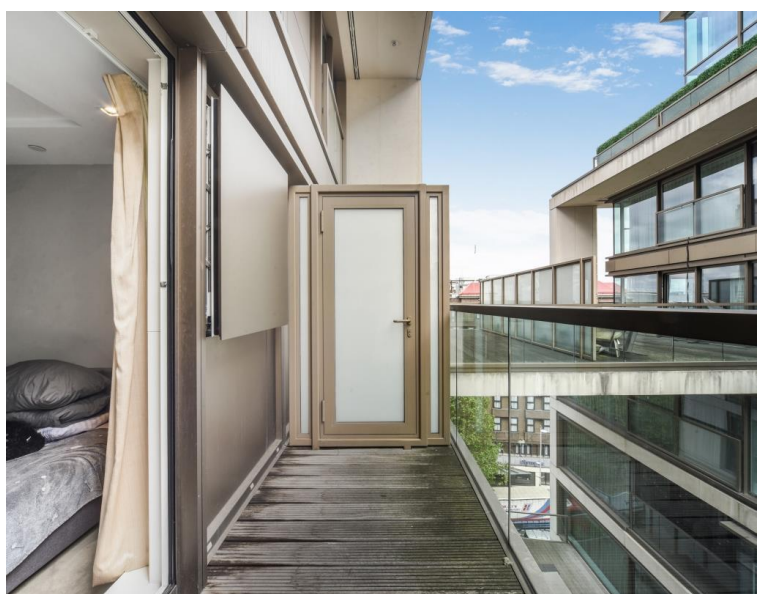
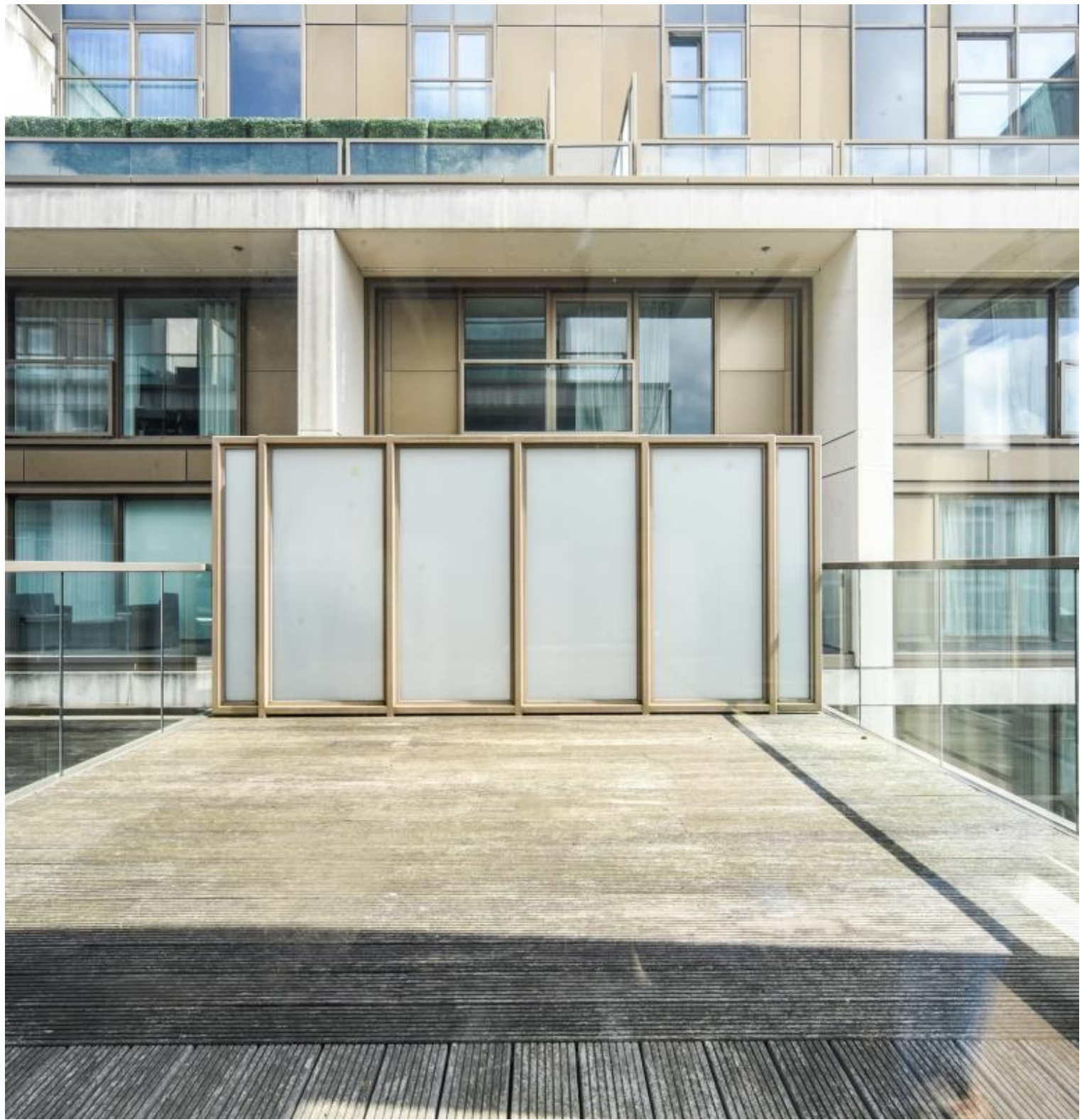




Kensington High Street, London W14

Asking price £1,490,000 Leasehold







Description

A stunning 2-bedroom, 2-bathroom apartment situated on the 9th floor in 375 Kensington High Street development by Berekely Group. This exceptional residence offers a beautiful blend of style and functionality.

The living area has warm wooden flooring and is bathed in natural light that streams through the floor-to-ceiling windows, and with the connection to the wrap-around balcony it makes the perfect space to unwind while enjoying the views. There are 2 double bedrooms, one of which has an en-suite bathroom, and a further communal bathroom serves the rest of the property.

Residents of Charles House benefit from secure entry systems, 24/7 concierge, swimming pool, cinema room, gym, massage suites and expansive sky garden/terrace.

Nestled in the heart of Kensington, this thriving neighbourhood offers a blend of world-class dining, shopping destinations, cultural attractions, and green spaces. Excellent transport links like Kensington Olympia station being within 0.3 miles and the wealth of other options are ensuring easy access to the rest of London.

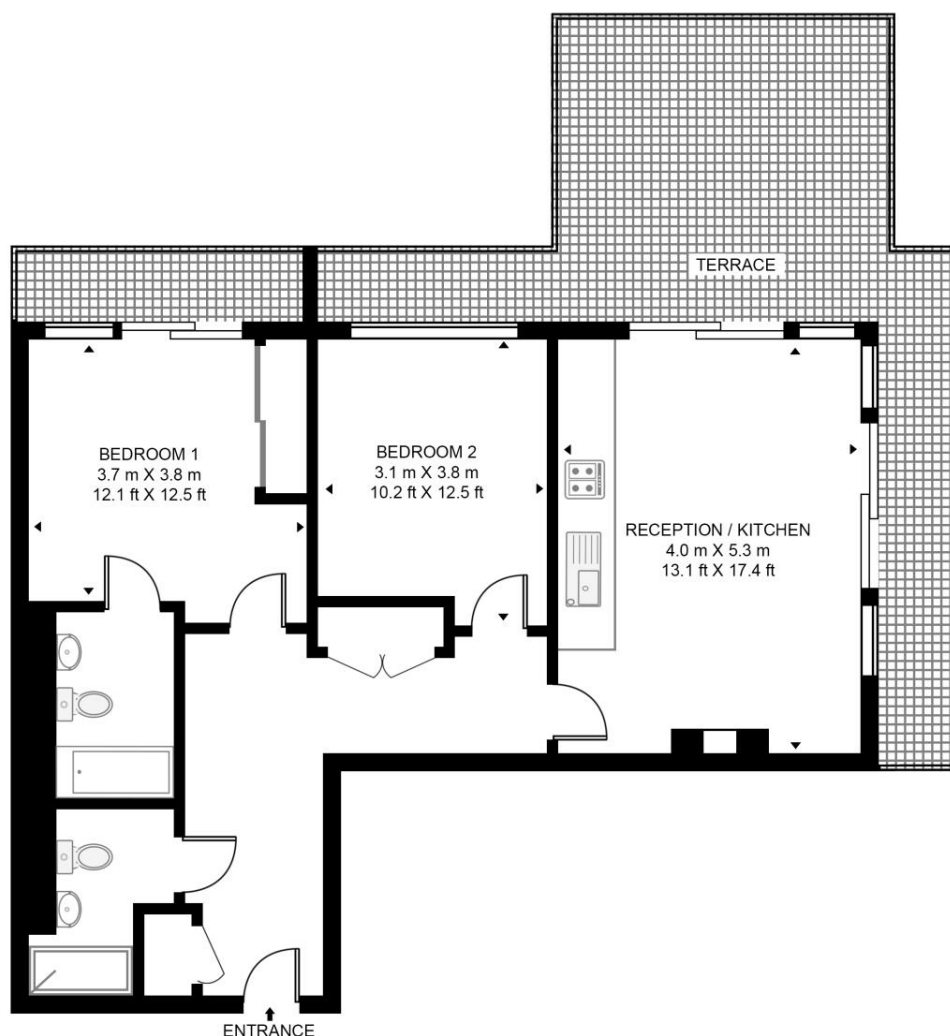
- 2 bedrooms
- 2 bathrooms
- Wrap-around balcony
- Underground parking
- 24 Hours concierge
- Luxury on-site facilities
- Approx 798 sq ft / 74 sq m
- EPC B

Floorplan

798 sq ft | 74 sq m

CHARLES HOUSE, KENSINGTON HIGH STREET

APPROXIMATE GROSS INTERNAL FLOOR AREA 798 SQ.FT (74.1 SQ.M)



NINTH FLOOR



This floor plan has been defined by the RICS Code of Measurement. This floor plan and all others are for approximate representative purposes only and upon usage is agreed to as such by the client.

WWW: hdvirtualart.com | TEL: 0203.974.1567 | EMAIL: info@hdvirtualart.com

Kensington
387 Kensington High Street,
London W14 8QA
+4420 7087 5696
lettingskensington@eu.jll.com

Urban living, your way.

jll.co.uk/residential

© 2019 Jones Lang LaSalle IP, Inc. All rights reserved. All information contained herein is from sources deemed reliable; however, no representation or warranty is made to the accuracy thereof.

