

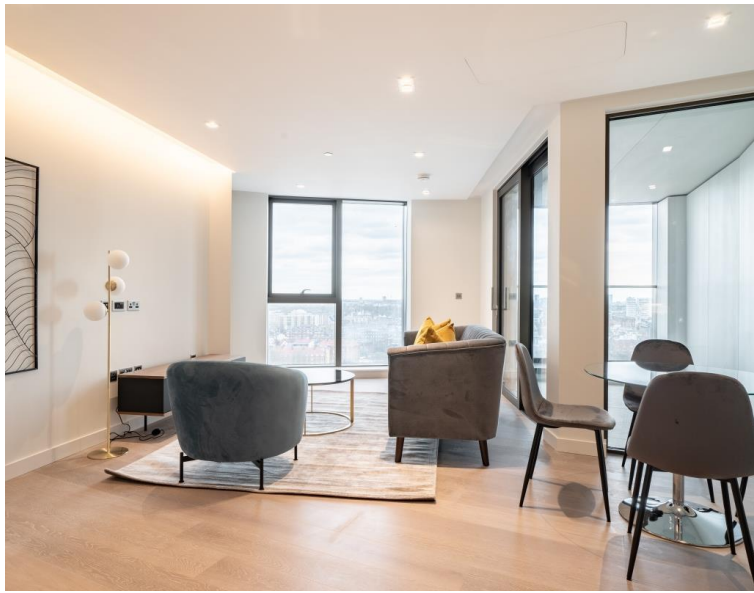


Newcastle Place, London W2

Price £1,250 per week - Furnished







Description

A luxury two bedroom apartment to let in Westmark Tower, part of the new West End Gate development in Paddington. Arranged over the 15th floor the property comprises two double bedrooms (one en-suite), second family sized bathroom, open plan kitchen and living room leading to the private balcony.

Rent is payable on a monthly basis and you may be required to pay more than a month's rent in advance, depending on your circumstances. You will be required to pay a 1 week holding deposit following a successful offer. Utility bills, council tax, telephone line and broadband are not included in the rent. As well as paying the rent, you may also be required to make some additional permitted payments. If your tenancy does not qualify as an AST, additional fees may apply. Please visit jll.co.uk/fees for details of fees which may be payable when renting a property.

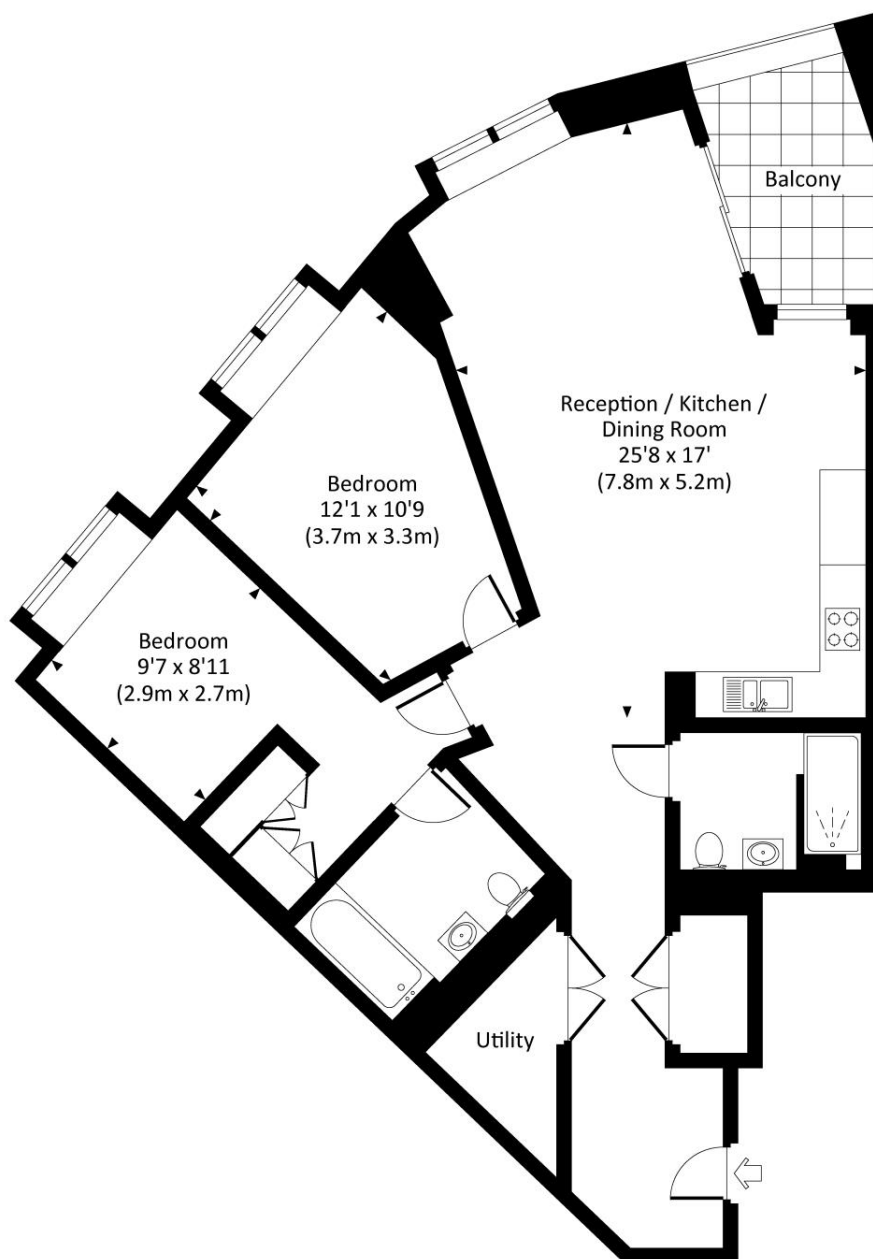
- 2 Bedrooms
- 2 Bathrooms
- Private balcony
- 24 Hour concierge
- Resident only leisure facilities
- Approx 1051 sq ft (98 sq m)
- Furnished
- EPC: B
- Council tax: Band F
- Deposit amount: £7,500 (estimate) and an initial holding deposit of 1 week's rent is payable to res

Floorplan

1,051 sq ft | 98 sq m

WESTMARK TOWER, W2

Approx. gross internal area
1051 Sq Ft. / 97.6 Sq M.



FIFTEENTH FLOOR

All measurements are approximate and for guidance and illustrative purposes only.
Photography and Floor Plans by www.rayco.london - +44 7793 974 209

Kensington
387 Kensington High Street,
London W14 8QA
+4420 7087 5696
lettingskensington@eu.jll.com

Urban living, your way.

jll.co.uk/residential

© 2019 Jones Lang LaSalle IP, Inc. All rights reserved. All information contained herein is from sources deemed reliable; however, no representation or warranty is made to the accuracy thereof.

