



Canalside Walk, London W2

Price £4,700 per month - Furnished







Description

A beautiful two double bedroom apartment available to rent on the third floor of the newest block in Paddington Basin overlooking the Regents Canal along with skyline views. The property comprises main bedroom with built in storage and en-suite bathroom, second double bedroom, large stylish family sized bathroom, and an open plan kitchen and living room leading to a private balcony with views over the Regents Canal. This building is the most recent building completed by European Land and is very high spec. Other benefits to the building include a day concierge seven days a week, roof top residents lounge with outside seating and some communal gym equipment. Paddington station is just a 2 minute walk away. This apartment is offered furnished.

Parking is included in the rent.

Further development info at <https://residential.jll.co.uk/number-three-canal-side-walk>

Rent is payable on a monthly basis and you may be required to pay more than a month's rent in advance, depending on your circumstances. You will be required to pay a 1 week holding deposit following a successful offer. Utility bills, council tax, telephone line and broadband are not included in the rent. As w

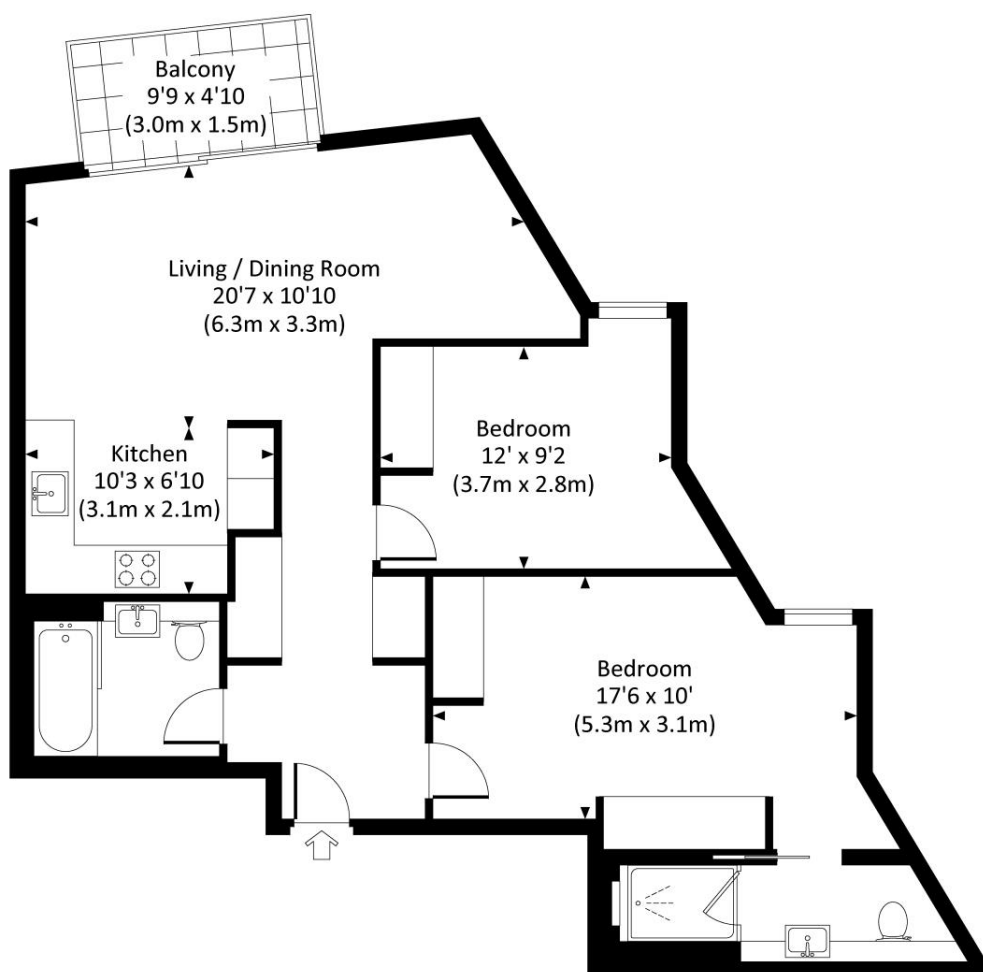
- Two double bedroom with storage
- 2 Bathrooms
- Balcony
- Concierge
- Residents lounge and gym equipment
- Approx 816 sq ft (76 sq m)
- Furnished
- EPC: B
- Parking included
- Council tax: Band F

Floorplan

816 sq ft | 76 sq m

CANALSIDE WALK, W2

Approx. gross internal area
816 Sq Ft. / 75.8 Sq M.



THIRD FLOOR

All measurements are approximate and for guidance and illustrative purposes only.
Photography and Floor Plans by www.thedowlingco.com - +44 7793 974 209

China Desk
Unit C1 4 Riverlight Quay,
London SW11 8DG
+4420 3147 1333
ChinaDeskPM@eu.jll.com

Urban living, your way.

jll.co.uk/residential

© 2019 Jones Lang LaSalle IP, Inc. All rights reserved. All information contained herein is from sources deemed reliable; however, no representation or warranty is made to the accuracy thereof.

