



Newcastle Place, London W2

£1,225,000 Leasehold







Description

Sophisticated 2 bedroom apartment located on the 4th floor of the prestigious Westmark Tower within West End Gate, St Edward's exemplary development in Paddington.

This immaculately presented residence features an open-concept living space, where the designer kitchen flows seamlessly into a light-filled reception area that opens onto a private balcony. The spacious main bedroom with a luxurious en-suite bathroom finished in premium materials, complemented by a second well-proportioned double bedroom and a stylish family bathroom with high-end fixtures. Neutral-coloured engineered wood flooring adds to the elegant appeal of this home, while additional conveniences include a dedicated utility/storage area.

Residents of Westmark Tower enjoy top notch amenities including 24-hour concierge service, a state-of-the-art gym, swimming pool, private cinema, meeting facilities, an elegant residents' lounge, and exclusive dining space for entertaining guests. Just a short walk (0.2 miles) from Edgware Road station and within half a mile from Paddington's various transport connections.

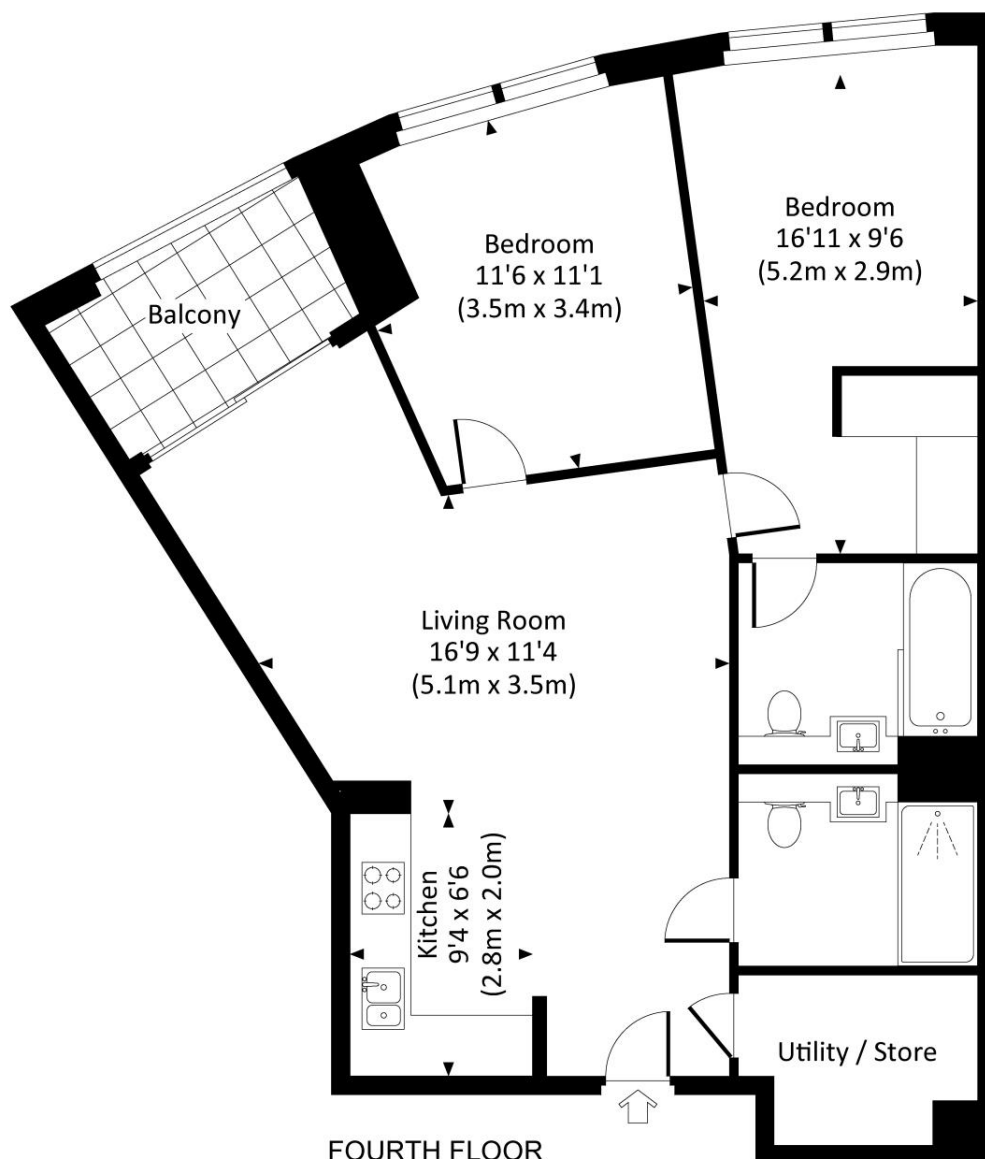
- 2 Bedrooms
- 2 Bathrooms
- Private balcony
- 24 Hour concierge
- Resident only leisure facilities
- Approx 809 sq ft / 75.2 sq m)
- EPC: B

Floorplan

809 sq ft | 75 sq m

WESTMARK TOWER, W2

Approx. gross internal area
809 Sq Ft. / 75.2 Sq M.



All measurements are approximate and for guidance and illustrative purposes only.
Photography and Floor Plans by www.rayco.london - +44 7793 974 209

Kensington
387 Kensington High Street,
London W14 8QA
+4420 7087 5696
lettingskensington@eu.jll.com

Urban living, your way.

jll.co.uk/residential

© 2019 Jones Lang LaSalle IP, Inc. All rights reserved. All information contained herein is from sources deemed reliable; however, no representation or warranty is made to the accuracy thereof.

