



**Sinclair Road, London W14**

£1,100,000 Leasehold









## Description

Discover luxury living at The Atelier, a brand-new development offering the pinnacle of modern urban living. This beautiful 2 bedroom first floor apartment is located in the heart of West London between Kensington Olympia and Shepherds Bush with Olympia station and the exciting Future Olympia redevelopment within 0.2 miles from the apartment. The interior boasts a contemporary design with high-quality finishes. The living area is bathed in natural light from large windows, complemented by stylish furnishings and a neutral colour palette. The modern kitchen is semi-separate and equipped with top-of-the-line appliances, perfect for both everyday meals and entertaining. The adjacent utility room ensures practical functionality and offering extra storage space for housing laundry facilities. The main bedroom comes complete with an en-suite bathroom for added convenience and there is a second bedroom and an additional bathroom. Residents of The Atelier enjoy exclusive access to premium building amenities such as concierge service, a fully-equipped gym, a cinema room, and secure bike storage.

- 2 Bedrooms
- 2 Bathrooms
- Concierge
- Exclusive resident facilities
- Lift
- Approx 818 sq ft (75 sq m)
- EPC: B
- Council tax: Band G

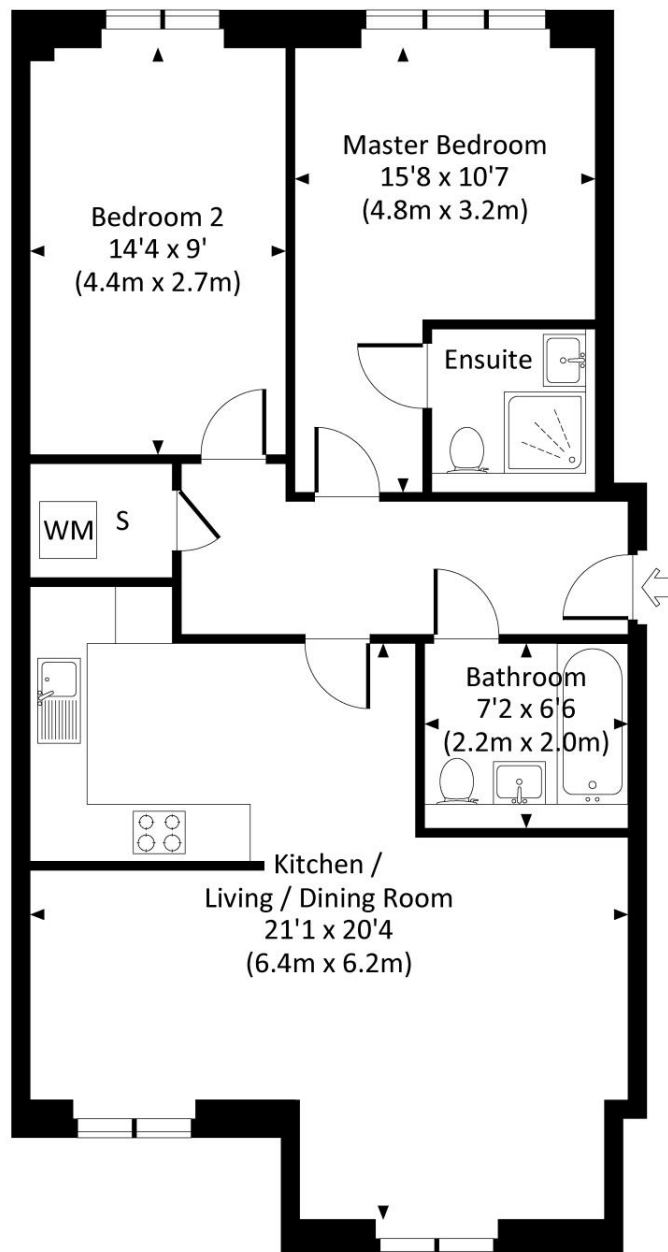
# Floorplan

818 sq ft | 76 sq m

## ATELIER APARTMENTS, SINCLAIR ROAD, W14

Approx. gross internal area

818 Sq Ft. / 76.0 Sq M.



FIRST FLOOR

All measurements are approximate and for guidance and illustrative purposes only.  
Photography and Floor Plans by [www.thedowlingco.com](http://www.thedowlingco.com) - +44 7793 974 209

Kensington  
387 Kensington High Street,  
London W14 8QA  
+4420 7087 5696  
[lettingskensington@eu.jll.com](mailto:lettingskensington@eu.jll.com)

*Urban living, your way.*

[jll.co.uk/residential](http://jll.co.uk/residential)

© 2019 Jones Lang LaSalle IP, Inc. All rights reserved. All information contained herein is from sources deemed reliable; however, no representation or warranty is made to the accuracy thereof.

