



Radnor Terrace, London W14

Price £950 per week - Furnished







Description

An elegant and spacious 2 double bedroom duplex apartment situated within the esteemed development, 375 Kensington High Street. Featuring a top of the range integrated open-plan kitchen and living room on the ground floor along with a guest WC, 2 double bedrooms (both en-suite) and a storage room on the lower ground floor with access to the private patio. This property also comes with secure underground parking.

Residents benefit from 24 hour concierge, the use of leisure facilities including a swimming pool, gym, cinema room, business suite and communal gardens.

Rent is payable on a monthly basis and you may be required to pay more than a month's rent in advance, depending on your circumstances. You will be required to pay a 1 week holding deposit following a successful offer. Utility bills, council tax, telephone line and broadband are not included in the rent. As well as paying the rent, you may also be required to make some additional permitted payments. If your tenancy does not qualify as an AST, additional fees may apply. Please visit jll.co.uk/fees for details of fees which may be payable when renting a property.

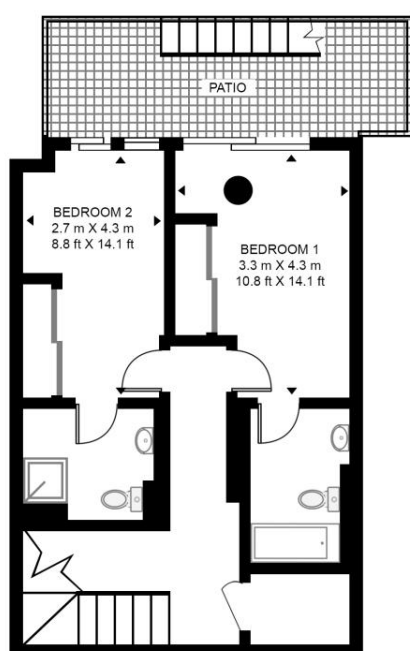
- 2 Bedrooms
- 2 Bathrooms plus guest WC
- Private patio
- 24 Hour concierge
- Swimming pool, cinema, gym
- Approx 1134 sq ft (105.4 sq m)
- Council tax: Band G
- Deposit amount: £4,750 (estimate) and an initial holding deposit of 1 week's rent is payable to res

Floorplan

1,134 sq ft | 105 sq m

BRIDGEMAN HOUSE, 1 RADNOR TERRACE

APPROXIMATE GROSS INTERNAL FLOOR AREA 1134 SQ.FT (105.4 SQ.M)



LOWER GROUND FLOOR



GROUND FLOOR



This floor plan has been defined by the RICS Code of Measurement. This floor plan and all others are for approximate representative purposes only and upon usage is agreed to as such by the client.

WWW: hdvirtualart.com | TEL: 0203.974.1567 | EMAIL: info@hdvirtualart.com

Kensington
387 Kensington High Street,
London W14 8QA
+4420 7087 5696
lettingskensington@eu.jll.com

Urban living, your way.

jll.co.uk/residential

© 2019 Jones Lang LaSalle IP, Inc. All rights reserved. All information contained herein is from sources deemed reliable; however, no representation or warranty is made to the accuracy thereof.

