



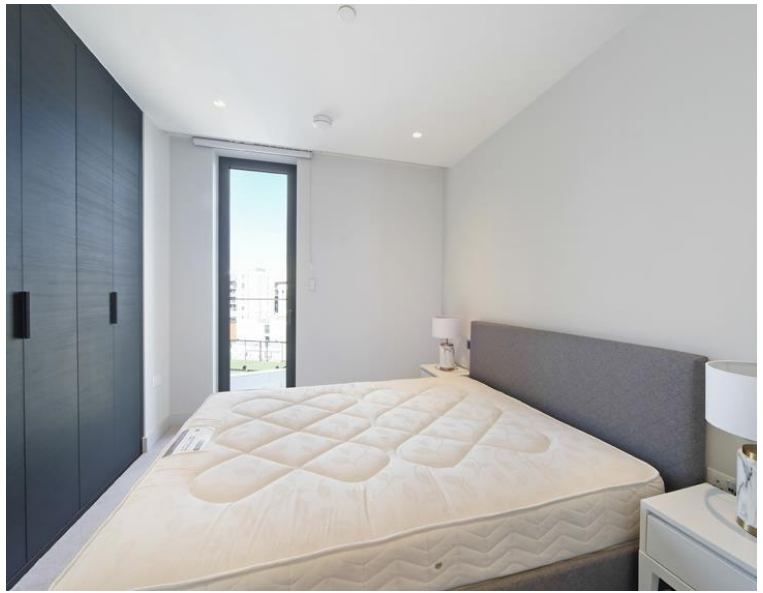
## Canalside Walk, London W2

Price £670 per week - Furnished









## Description

A brand new one bedroom apartment available to rent on the 12th floor of the newest block in Paddington Basin. The property comprises one double bedroom with built in storage, large stylish bathroom, and an open plan kitchen and living room. This building is the most recent building completed by European Land and is very high spec. Other benefits to the building include a day concierge seven days a week, roof top residents lounge with outside seating and some communal gym equipment. Paddington station is just a 2 minute walk away. This apartment is offered furnished and is ready for immediate occupancy.

Further development info at <https://residential.jll.co.uk/number-three-canalside-walk>

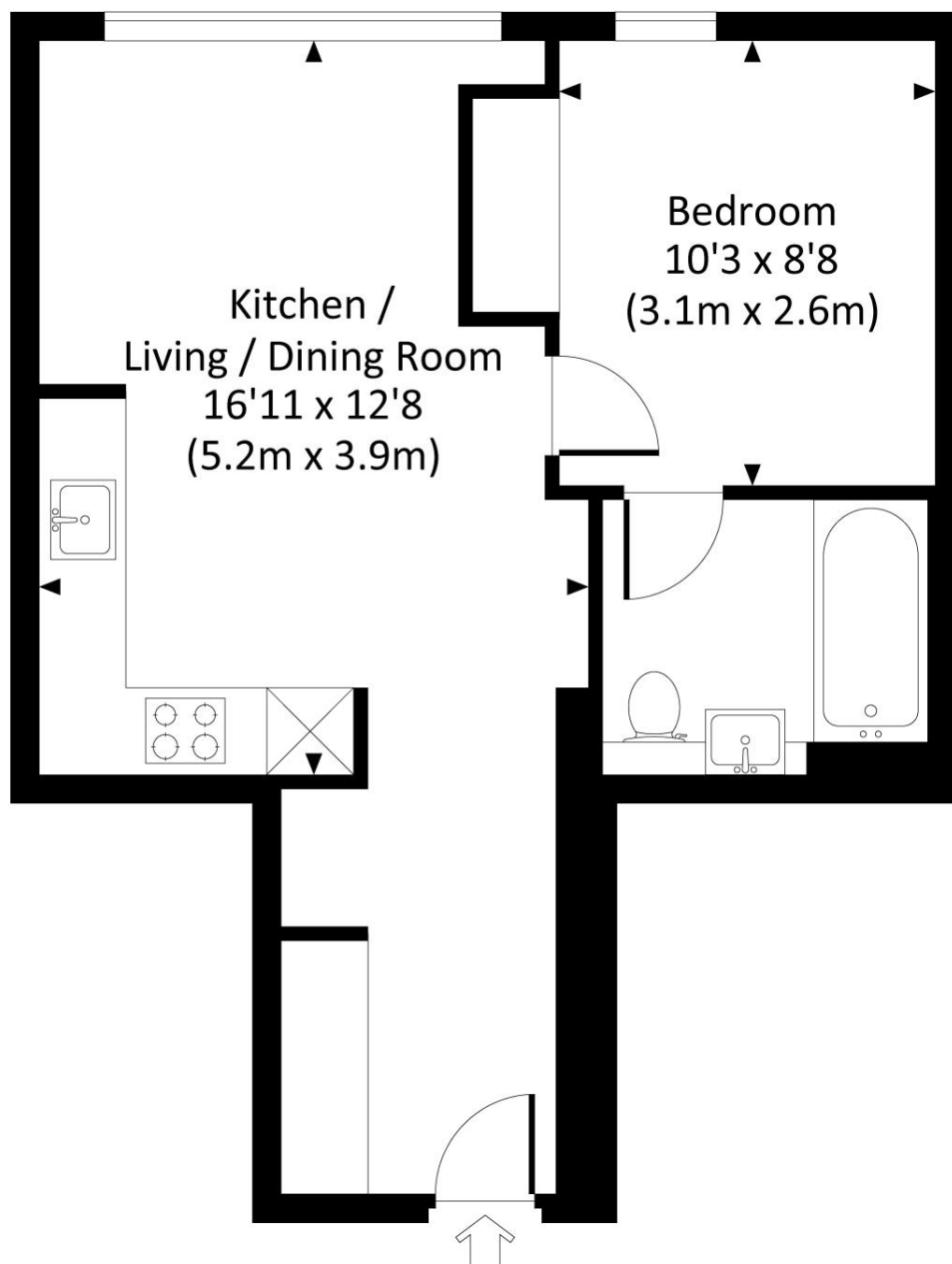
Rent is payable on a monthly basis and you may be required to pay more than a month's rent in advance, depending on your circumstances. You will be required to pay a 1 week holding deposit following a successful offer. Utility bills, council tax, telephone line and broadband are not included in the rent. As well as paying the rent, you may also be required to make some additional permitted payments. If your tenancy does not qualify as an AST, additional fees may apply. Please visit [jll.co.uk/fees](https://jll.co.uk/fees) for details of fees which may be payable when ren

- One double bedroom with storage
- Lift
- Balcony
- Concierge
- Residents lounge and gym equipment
- Approx 409 sq ft (38 sq m)
- Furnished
- EPC: B
- Council tax: Band E
- Deposit amount: £3,350 (estimate) and an initial holding deposit of 1 week's rent is payable to res

# Floorplan

409 sq ft | 38 sq m

CANALSIDE, W2  
Approx. gross internal area  
409 Sq Ft. / 38.0 Sq M.



TWELVTH FLOOR

All measurements are approximate and for guidance and illustrative purposes only.  
Photography and Floor Plans by [www.thedowlingco.com](http://www.thedowlingco.com) - +44 7793 974 209

Kensington  
387 Kensington High Street,  
London W14 8QA  
+4420 7087 5696  
[lettingskensington@eu.jll.com](mailto:lettingskensington@eu.jll.com)

*Urban living, your way.*

[jll.co.uk/residential](http://jll.co.uk/residential)

© 2019 Jones Lang LaSalle IP, Inc. All rights reserved. All information contained herein is from sources deemed reliable; however, no representation or warranty is made to the accuracy thereof.

