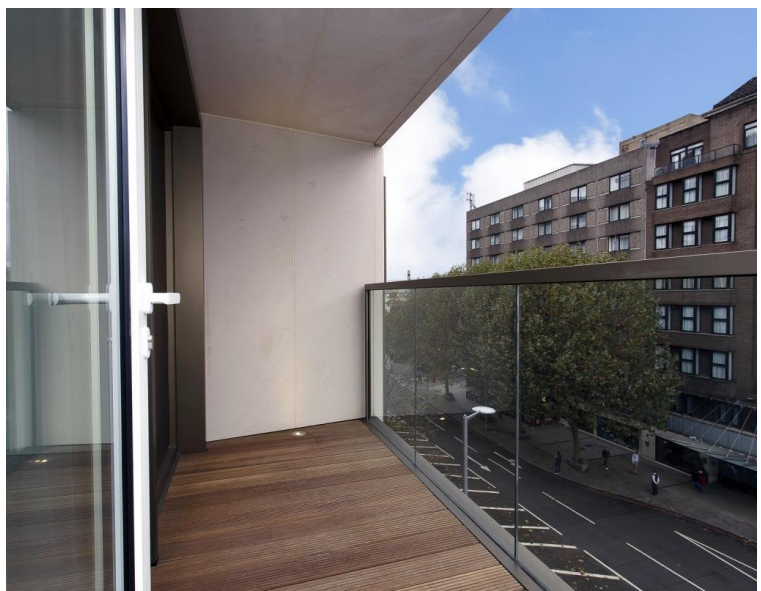




**Kensington High Street, London W14**  
£2,000,000 Leasehold











## Description

Exquisite 2 bedroom apartment, nestled on the 5th floor of a prestigious development just 0.3 miles from Kensington Olympia Station and the exciting Olympia regeneration. This premium residence stands out as one of the building's most coveted plots, boasting a generous layout that surpasses most 2 and 3 bedroom units in size. The apartment's corner position affords unobstructed views to the east, with outlook over Kensington High Street.

Inside this home, an elegant hallway leading to a sophisticated open-plan kitchen and reception area with access to the delightful private balcony - perfect spot for al fresco dining or unwinding while taking in the cityscape.

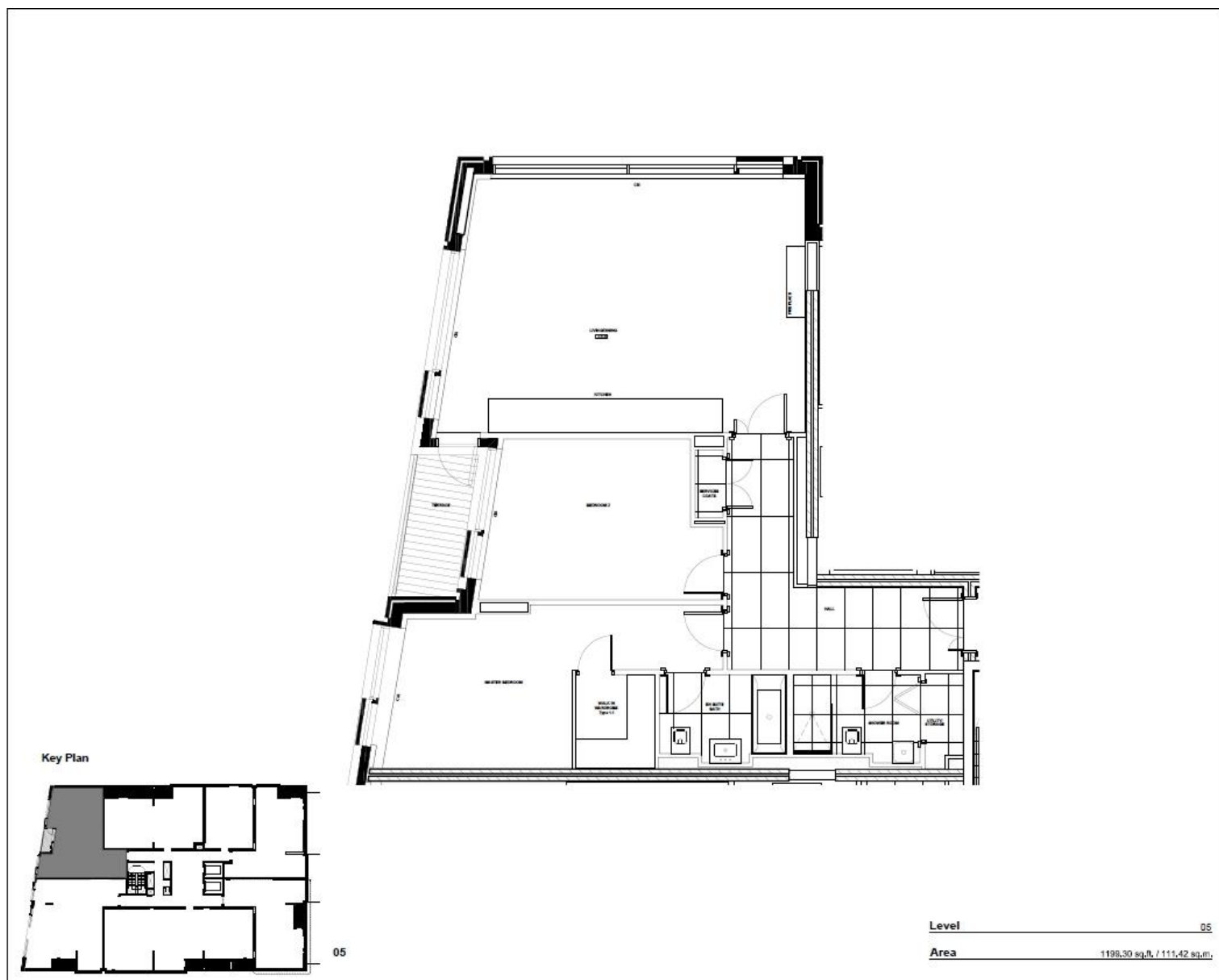
The main bedroom is complete with a luxurious walk-in wardrobe and en-suite bathroom. The second bedroom offering direct access to the balcony. A well-appointed communal bathroom and a smart utility area round out this thoughtfully designed apartment.

Residents of this exceptional development enjoy 24-hour concierge service, state-of-the-art business suite, a private cinema room, bespoke swimming pool, comprehensive fitness and spa facilities, and beautifully landscaped courtyard.

- 2 Bedrooms
- 2 Bathrooms
- Private balcony
- Underground parking
- 24 Hr concierge
- Gym, swimming pool, cinema
- Kensington Olympia Station 0.3 miles
- Approx 1199.30 sq ft (111.42 sq m)
- EPC: B

# Floorplan

1,199 sq ft | 111 sq m



Kensington  
387 Kensington High Street,  
London W14 8QA  
+4420 7087 5696  
[lettingskensington@eu.jll.com](mailto:lettingskensington@eu.jll.com)

*Urban living, your way.*

[jll.co.uk/residential](http://jll.co.uk/residential)

© 2019 Jones Lang LaSalle IP, Inc. All rights reserved. All information contained herein is from sources deemed reliable; however, no representation or warranty is made to the accuracy thereof.

