



Sinclair Road, London W14

Price £875 per week - Furnished







Description

A brand new luxury two bedroom apartment to let with concierge between Kensington Olympia and Shepherds Bush. Arranged over the first floor of the building, the apartment comprises two double bedrooms with storage, two bathrooms, open plan kitchen and living room.

The Atelier building is brand new and built to the highest of standards. Benefits include concierge, gym, cinema room and bike store.

This apartment is offered on a furnished basis and available for immediate occupancy.

Rent is payable on a monthly basis and you may be required to pay more than a month's rent in advance, depending on your circumstances. You will be required to pay a 1 week holding deposit following a successful offer. Utility bills, council tax, telephone line and broadband are not included in the rent. As well as paying the rent, you may also be required to make some additional permitted payments. If your tenancy does not qualify as an AST, additional fees may apply. Please visit jll.co.uk/fees for details of fees which may be payable when renting a property.

- 2 Bedrooms
- 2 Bathrooms
- Concierge
- Cinema pool
- Gym
- Lift
- Approx 818 sq ft (75 sq m)
- Furnished
- EPC: B
- Council tax: Band G

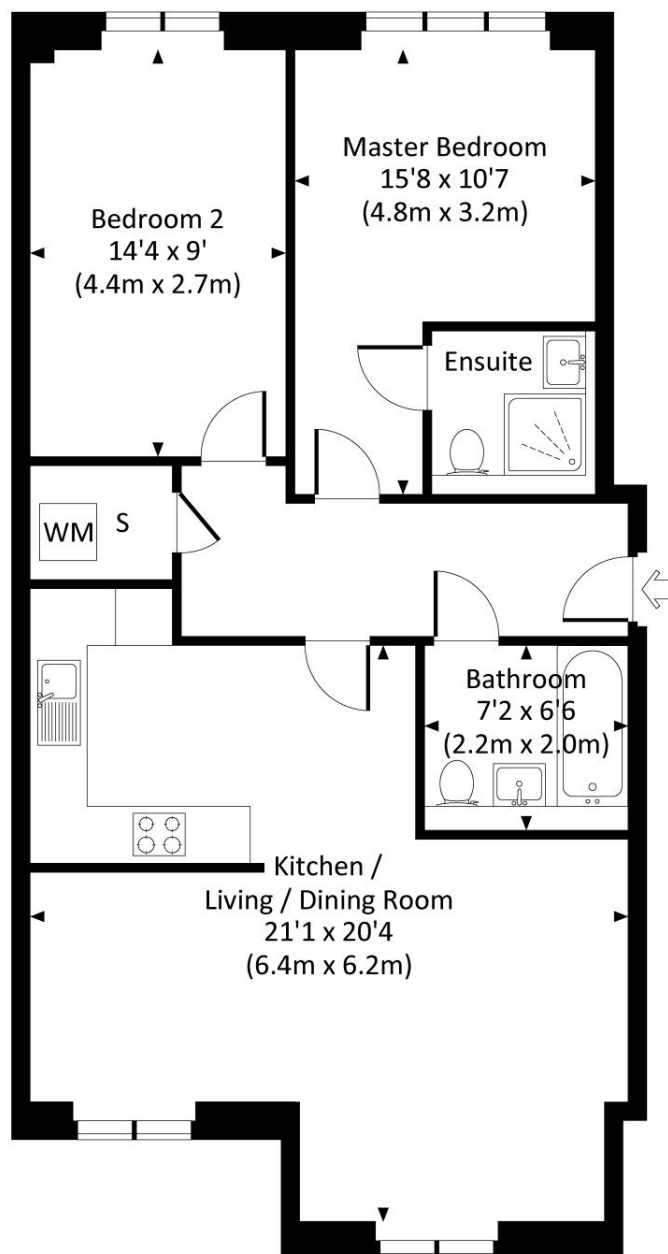
Floorplan

818 sq ft | 76 sq m

ATELIER APARTMENTS, SINCLAIR ROAD, W14

Approx. gross internal area

818 Sq Ft. / 76.0 Sq M.



FIRST FLOOR

All measurements are approximate and for guidance and illustrative purposes only.
Photography and Floor Plans by www.thedowlingco.com - +44 7793 974 209

Kensington
387 Kensington High Street,
London W14 8QA
+4420 7087 5696
lettingskensington@eu.jll.com

Urban living, your way.

jll.co.uk/residential

© 2019 Jones Lang LaSalle IP, Inc. All rights reserved. All information contained herein is from sources deemed reliable; however, no representation or warranty is made to the accuracy thereof.

