



Merchant Square East, London W2

Price £1,000 per week - Furnished







Description

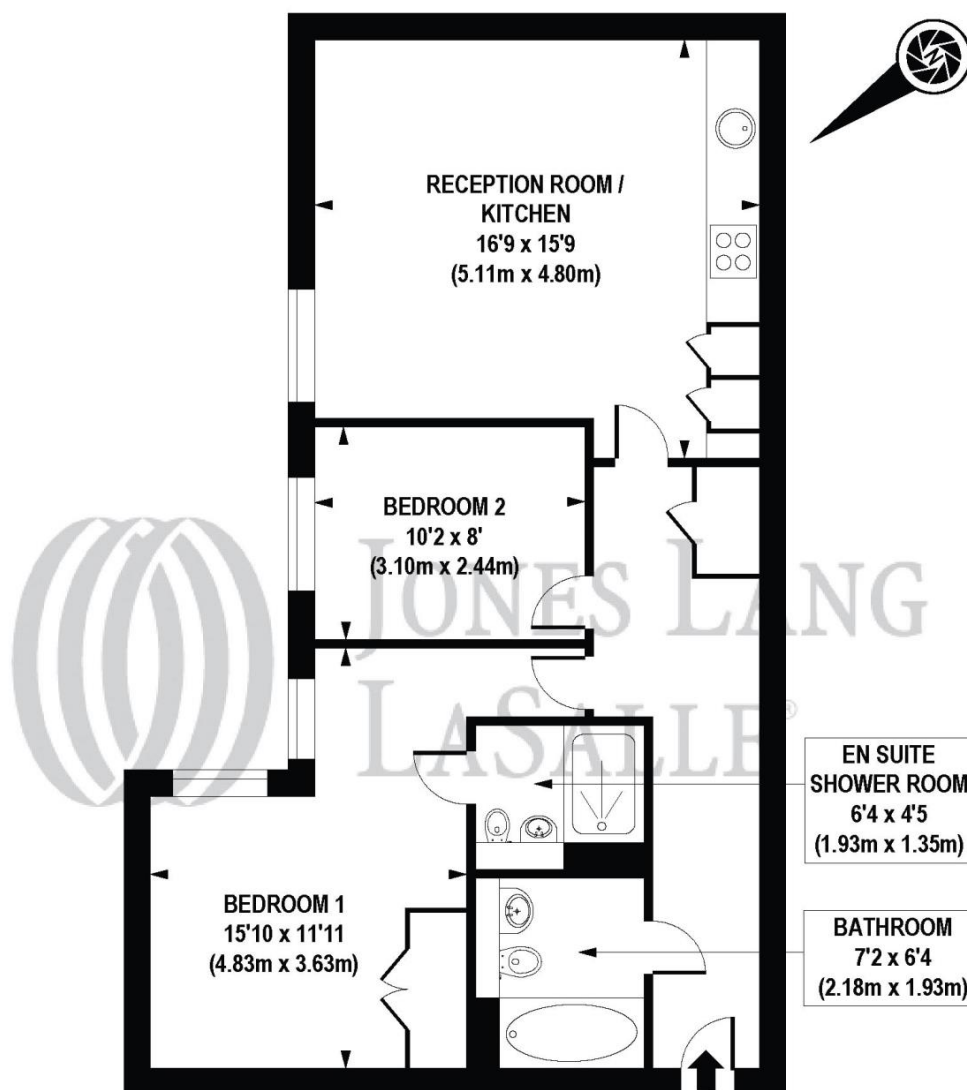
A stunning seventh floor apartment (with lift) in this new development within Paddington Basin. The property consists of master bedroom with en suite shower room, second double bedroom, one bathroom, reception room with dining area and a fully fitted, open plan kitchen. Further benefits include underfloor heating, air conditioning and 24 hour concierge.

Rent is payable on a monthly basis and you may be required to pay more than a month's rent in advance, depending on your circumstances. You will be required to pay a 1 week holding deposit following a successful offer. Utility bills, council tax, telephone line and broadband are not included in the rent. As well as paying the rent, you may also be required to make some additional permitted payments. If your tenancy does not qualify as an AST, additional fees may apply. Please visit jll.co.uk/fees for details of fees which may be payable when renting a property.

- 2 Bedrooms
- 2 Bathrooms
- 24 hour concierge
- Approx 713 sq ft (66 sq m)
- Furnished
- EPC: B
- Council tax: Band F
- Deposit amount: £6,000 (estimate) and an initial holding deposit of 1 week's rent is payable to res

Floorplan

713 sq ft | 66 sq m



THIRD FLOOR

APPROX. GROSS INTERNAL FLOOR AREA 713 sq. ft / 66.22 sq. m

COMPLIANT WITH RICS CODE OF MEASURING PRACTICE Floorplan is for illustrative purposes only and is not to scale. Every attempt has been made to ensure the accuracy of the floorplan shown, however all measurements, fixtures, fittings and data shown are an approximate interpretation for illustrative purposes only. Liability for errors, omissions or mis-statement through negligence or otherwise is hereby excluded.

CPICREATIVE
Property Marketing

Kensington
387 Kensington High Street,
London W14 8QA
+4420 7087 5696
lettingskensington@eu.jll.com

Urban living, your way.

jll.co.uk/residential

© 2019 Jones Lang LaSalle IP, Inc. All rights reserved. All information contained herein is from sources deemed reliable; however, no representation or warranty is made to the accuracy thereof.

