

Fountain Park Way, London W12

Asking price £750,000 Leasehold







Description

Nestled in the heart of Shepherd's Bush is this spacious 1 bedroom apartment on the 11th floor of Lincoln Apartments in White City Living.

The accommodation boasts an expansive open-plan reception, measuring approximately 17'x20', which extends onto a private balcony that offers a tranquil outdoor retreat, making the living space an inviting area for relaxation and entertainment. The sleek kitchen is fitted with top-of-the-line appliances. The bedroom boasts integrated storage and luxurious carpeting. A modern bathroom and clever hallway storage complete this attractive apartment.

Residents have access to an impressive array of on-site amenities, including round-the-clock concierge service, a sophisticated resident's lounge, professional meeting facilities, a rejuvenating pool and spa complex, state-of-the-art gym, lush communal gardens, and an exclusive cineplex (personal Blu-ray disc on demand & PS4 Pro available). Perfectly positioned for city life, this home offers easy access to excellent transport links, with both Wood Lane and White City stations within 360 yards, and the renowned Westfield shopping centre within similar proximity, ensuring that urban convenience is always at your fingertips.

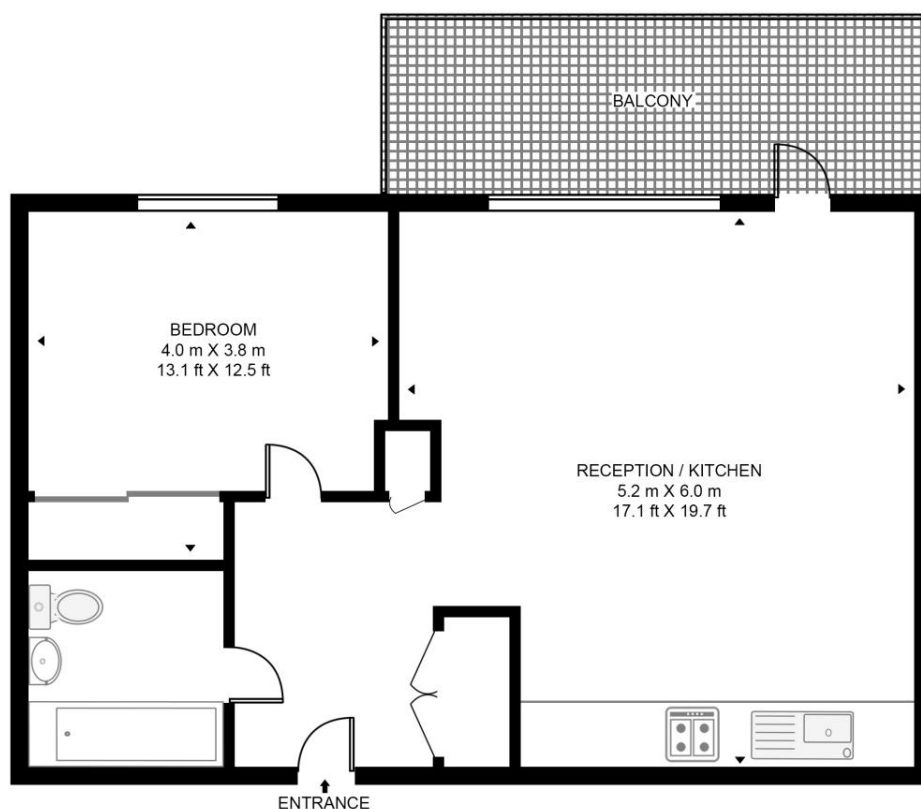
- White City Living
- 1 Double bedroom
- 1 Bathroom
- Open-plan reception
- Private balcony
- Wood Lane and White City stations within 0.2 miles
- Westfield shopping centre 0.2 miles
- Approx 594 sq ft / 55.2 sq m
- EPC B

Floorplan

594 sq ft | 55 sq m

LINCOLN APARTMENTS, WHITE CITY LIVING

APPROXIMATE GROSS INTERNAL FLOOR AREA 594 SQ.FT (55.2 SQ.M)



ELEVENTH FLOOR



HDVA

This floor plan has been defined by the RICS Code of Measurement. This floor plan and all others are for approximate representative purposes only and upon usage is agreed to as such by the client.

WWW: hdvirtualart.com | TEL: 0203.974.1567 | EMAIL: info@hdvirtualart.com

Kensington
387 Kensington High Street,
London W14 8QA
+4420 7087 5696
lettingskensington@eu.jll.com

Urban living, your way.

jll.co.uk/residential

© 2019 Jones Lang LaSalle IP, Inc. All rights reserved. All information contained herein is from sources deemed reliable; however, no representation or warranty is made to the accuracy thereof.

