



Hammersmith Grove, London W6

Offers In Excess Of £650,000 Share of







Description

Nestled in the coveted Hammersmith Grove within Brackenbury Village, this exquisite 850 sq. ft. lower ground floor apartment masterfully blends modern luxury with rustic charm. The 2-bedroom, 1-bathroom maisonette features its own private entrance and is part of a share of freehold with a long underlying lease.

Step inside to discover a spacious open-concept living area, where a state-of-the-art kitchen seamlessly integrates with the dining and living spaces. Bathed in natural light from large windows and enhanced by high ceilings, the room showcases an exposed brick fireplace and wooden floors, creating an ambiance of sophisticated comfort. The hallway leads to a luxurious bathroom, complete with a rainfall shower and crittall-style doors, as well as a cleverly designed home office nook. Two generous double bedrooms await, with the primary bedroom offering direct access to a delightful west-facing communal garden.

Located in the heart of Brackenbury Village, this home is surrounded by trendy cafes, wine bars, and excellent transport links to central London. This rare gem in one of West London's most sought-after areas presents an unmissable opportunity for discerning buyers seeking a perfect blend of style and location.

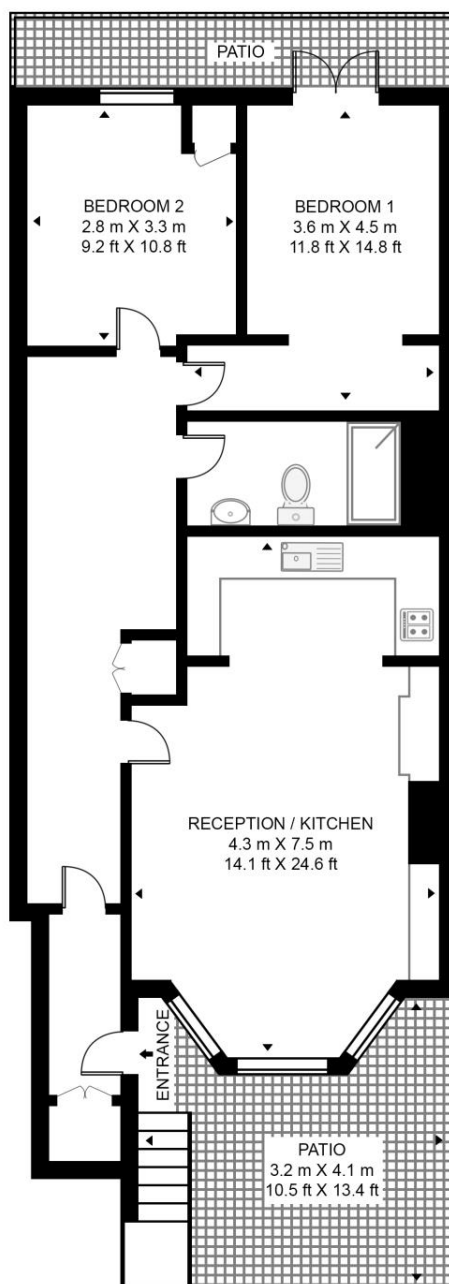
- Tree-lined residential street
- Share of Freehold - underlying 981 years
- 2 Double bedrooms
- 1 Bathroom
- Front and rear patio
- Goldhawk Road station within 0.3 miles
- Approx 795 sq ft / 79.9 sq m
- EPC C

Floorplan

795 sq ft | 74 sq m

HAMMERSMITH GROVE

APPROXIMATE GROSS INTERNAL FLOOR AREA 795 SQ.FT (73.9 SQ.M)



LOWER GROUND FLOOR



This floor plan has been defined by the RICS Code of Measurement. This floor plan and all others are for approximate representative purposes only and upon usage is agreed to as such by the client.
WWW: hdvirtualart.com | TEL: 0203.974.1567 | EMAIL: info@hdvirtualart.com

Kensington
387 Kensington High Street,
London W14 8QA
+4420 7087 5696
lettingskensington@eu.jll.com

Urban living, your way.

jll.co.uk/residential

© 2019 Jones Lang LaSalle IP, Inc. All rights reserved. All information contained herein is from sources deemed reliable; however, no representation or warranty is made to the accuracy thereof.

