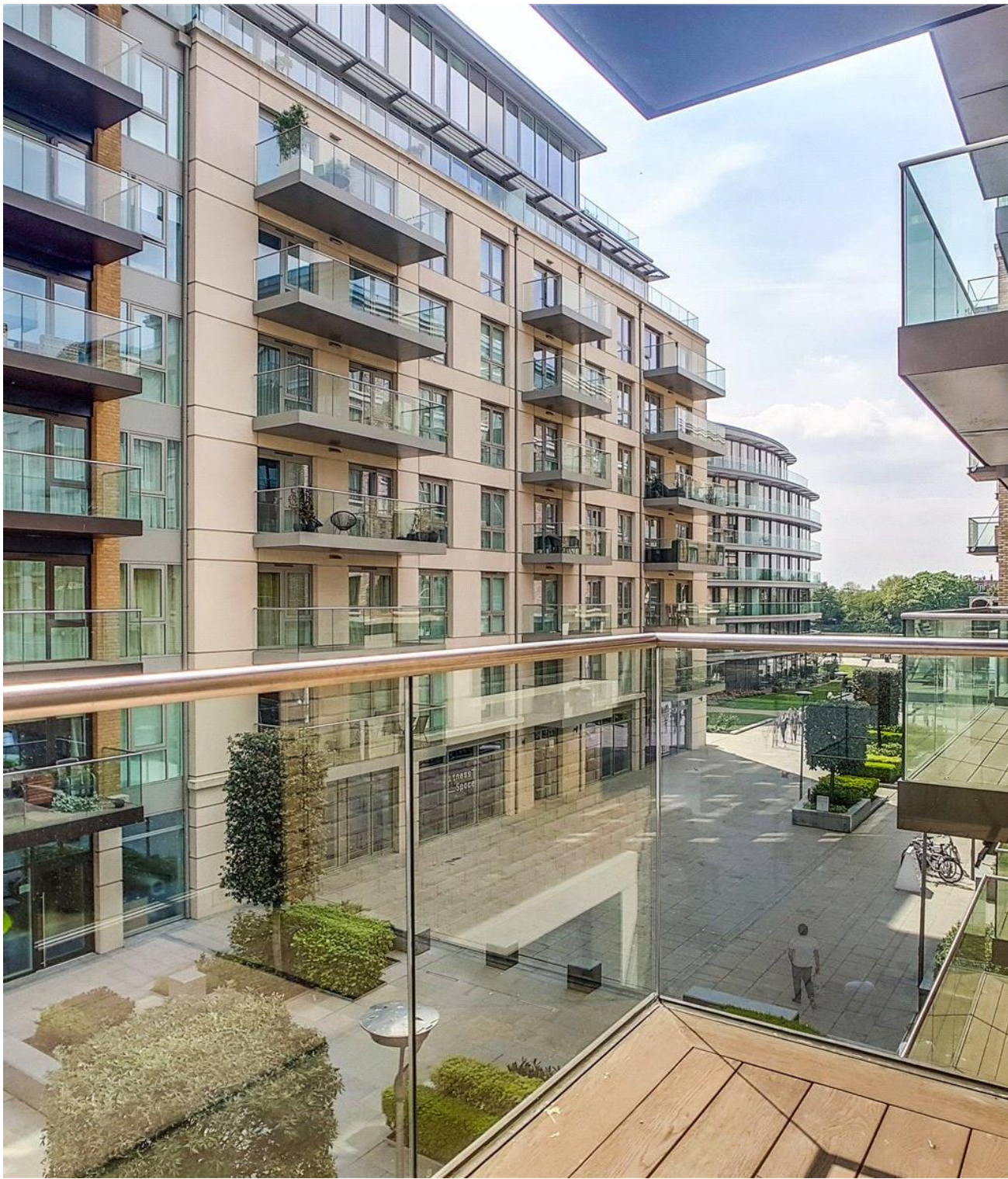




Parrs Way, London W6

Guide price £650,000 Leasehold





Description

Discover luxury living in this stunning 1-bedroom apartment nestled on the 2nd floor of an exceptional riverside development, Brunswick House.

Step into a world of elegance with an open-plan kitchen and living area that extends to a private balcony, perfect for enjoying morning coffee or evening relaxation. The spacious bedroom, complete with fitted wardrobes, provides a tranquil retreat, complemented by a family-sized bathroom.

Residents of this prestigious development enjoy access to an array of great amenities, including a 24-hour concierge service, gym, swimming pool, cinema room, and even a virtual golf room.

Located in a prime area, a leisurely 150-meter stroll to reach the picturesque Thames riverside, perfect for scenic walks or jogs. For commuters, Hammersmith station is conveniently situated 0.6 miles away, while Barons Court Station is a mere 0.7 miles ensuring seamless transportation links throughout the capital.

- 1 Double bedroom
- 1 Bathroom
- Private balcony
- Interior designed
- 24 Hour concierge
- Gym, swimming pool, cinema
- Within 150 yards to Thames river
- 0.6 miles to Hammersmith station
- Approx 545 sq ft / 521sq m
- EPC B



Floorplan

545 sq ft | 51 sq m

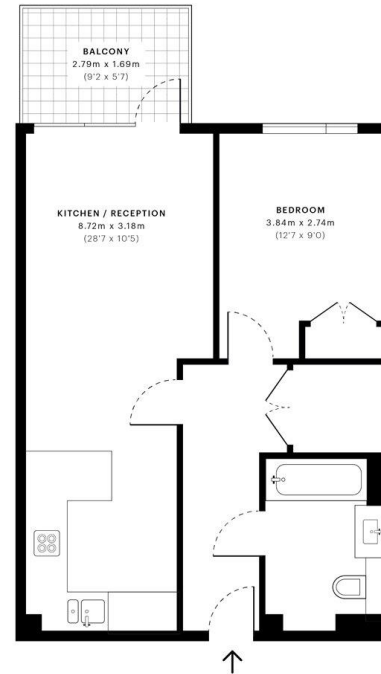


Brunswick House, W6

CAPTURE DATE
30/04/2019

LASER SCAN POINTS
19,063,230

GROSS INTERNAL AREA
50.7 Sqm / 545.5 Sqft



— Second Floor

GROSS INTERNAL AREA
The footprint of the property
50.7 Sqm / 545.5 Sqft

NET AREA (INTERNAL)
Excludes walls and external features
48.9 Sqm / 526.9 Sqft

EXTERNAL STRUCTURAL FEATURES
Balconies, terraces, verandas etc.
4.8 Sqm / 51.2 Sqft

RESTRICTED HEAD HEIGHT
Limited use area under 1.5m
0.0 Sqm / 0.0 Sqft



Spec floor plans are produced in accordance with the Royal Institution of Chartered Surveyors' Property Measurement Standards. Plots and gardens are illustrative only and are excluded from all area calculations. Due to rounding, numbers may not add up precisely.



IPMS 3B RESIDENTIAL
55.9 Sqm / 602.1 Sqft
IPMS 3C RESIDENTIAL
54.2 Sqm / 583.4 Sqft

SPEC ID:
5cb86a416f880a0atefb47ec

Kensington
387 Kensington High Street,
London W14 8QA
+4420 7087 5696
lettingskensington@eu.jll.com

Urban living, your way.

jll.co.uk/residential

© 2019 Jones Lang LaSalle IP, Inc. All rights reserved. All information contained herein is from sources deemed reliable; however, no representation or warranty is made to the accuracy thereof.

