



Sinclair Road, London W14

£1,100,000 Leasehold







Description

Nestled on the 4th floor of Atelier Apartment, a well-managed new development with porter service, this stunning 2 bedroom apartment offers modern living at its finest.

The property has been finished to a high standard, featuring an open-plan kitchen and living room with elegant wood flooring, 2 double bedrooms each boasting built-in storage, and a large, stylish family bathroom.

Perfectly positioned between Kensington High Street, Hammersmith, and Shepherds Bush, and just moments from Kensington Olympia. Residents enjoy easy access to numerous public transport options, including bus, overground, and tube stations nearby. The vibrant neighbourhood is dotted with local restaurants and bars, making this apartment an ideal choice for those seeking a blend of comfort, convenience, and urban sophistication in one of London's most desirable areas.

- 2 Double bedrooms
- 1 Bathroom
- Concierge
- Lift
- Resident gym
- Communal gardens
- Approx 740.8 sq ft / 68.8 sq m
- EPC: B

Floorplan

741 sq ft | 69 sq m

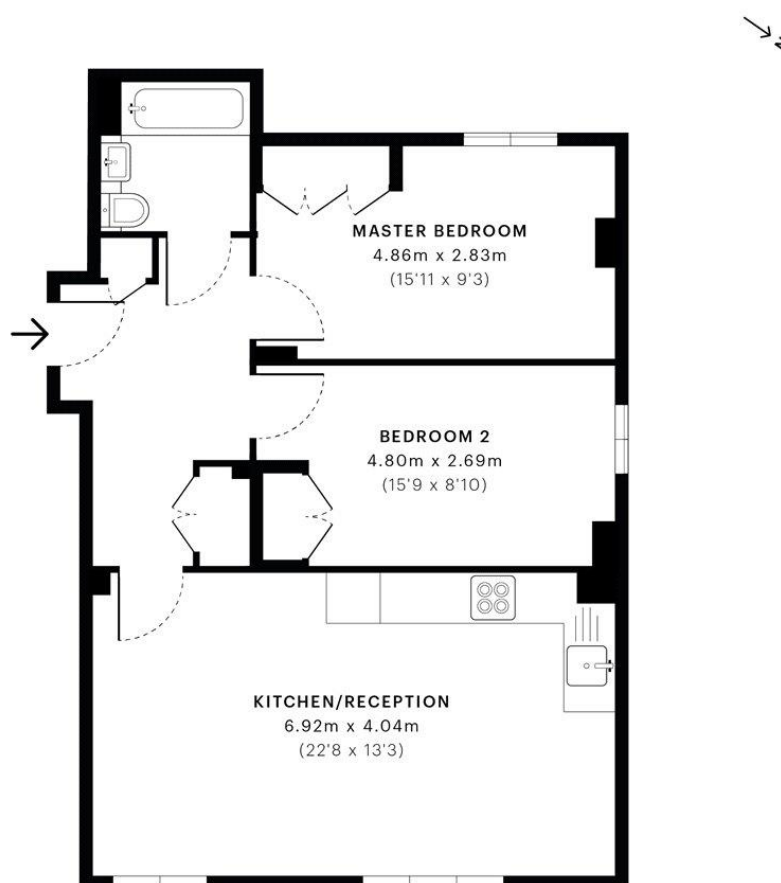


Atelier Apartments, W14

CAPTURE DATE
27/11/2019

LASER SCAN POINTS
32,889,410

GROSS INTERNAL AREA
68.8 Sqm / 740.8 Sqft



— Fourth Floor



GROSS INTERNAL AREA (GIA)
The footprint of the property.
68.8 Sqm / 740.8 Sqft



NET INTERNAL AREA (NIA)
Excludes walls and external features.
Includes washrooms, restricted head
65.7 Sqm / 707.2 Sqft



EXTERNAL STRUCTURAL FEATURES
Balconies, terraces, verandas etc.
0.0 Sqm / 0.0 Sqft



RESTRICTED HEAD HEIGHT
Limited use area under 1.5m
0.0 Sqm / 0.0 Sqft



Spec floor plans are produced in accordance with the Royal Institution of Chartered Surveyors' Property Measurement Standards. Plots and gardens are illustrative only and are excluded from all area calculations. Due to rounding, numbers may not add up precisely. All measurements shown for the individual room lengths and widths are the maximum points of measurements captured in the scan.

IPMS 3B RESIDENTIAL
69.4 Sqm / 747.5 Sqft

IPMS 3C RESIDENTIAL
66.3 Sqm / 714.0 Sqft

SPEC ID
5ddd5c5203c0f90a14102847

Kensington
387 Kensington High Street,
London W14 8QA
+4420 7087 5696
lettingskensington@eu.jll.com

Urban living, your way.

jll.co.uk/residential

© 2019 Jones Lang LaSalle IP, Inc. All rights reserved. All information contained herein is from sources deemed reliable; however, no representation or warranty is made to the accuracy thereof.

