



## Fountain Park Way, London W12

Price £650 per week - Furnished









## Description

A brand new luxurious one-bedroom apartment to let with private balcony in the award-winning White City Living development. Arranged over the second floor, property comprises one double bedroom, stylish family sized bathroom, large open plan kitchen and living room leading to a private balcony with fantastic views. White city living is a beautiful development set in tranquil communal landscaped gardens and is located next to Westfield and Wood Lane tube station. Other benefits include 24-hour concierge, resident only facilities including gym, spa, cinema, and swimming pool. This property is offered on a furnished basis, is ready for immediate occupancy and is professionally managed for tenant's peace of mind.

Rent is payable on a monthly basis and you may be required to pay more than a month's rent in advance, depending on your circumstances. You will be required to pay a 1 week holding deposit following a successful offer. Utility bills, council tax, telephone line and broadband are not included in the rent. As well as paying the rent, you may also be required to make some additional permitted payments. If your tenancy does not qualify as an AST, additional fees may apply. Please visit [jll.co.uk/fees](http://jll.co.uk/fees) for details of fees which may be payable when renting a property.

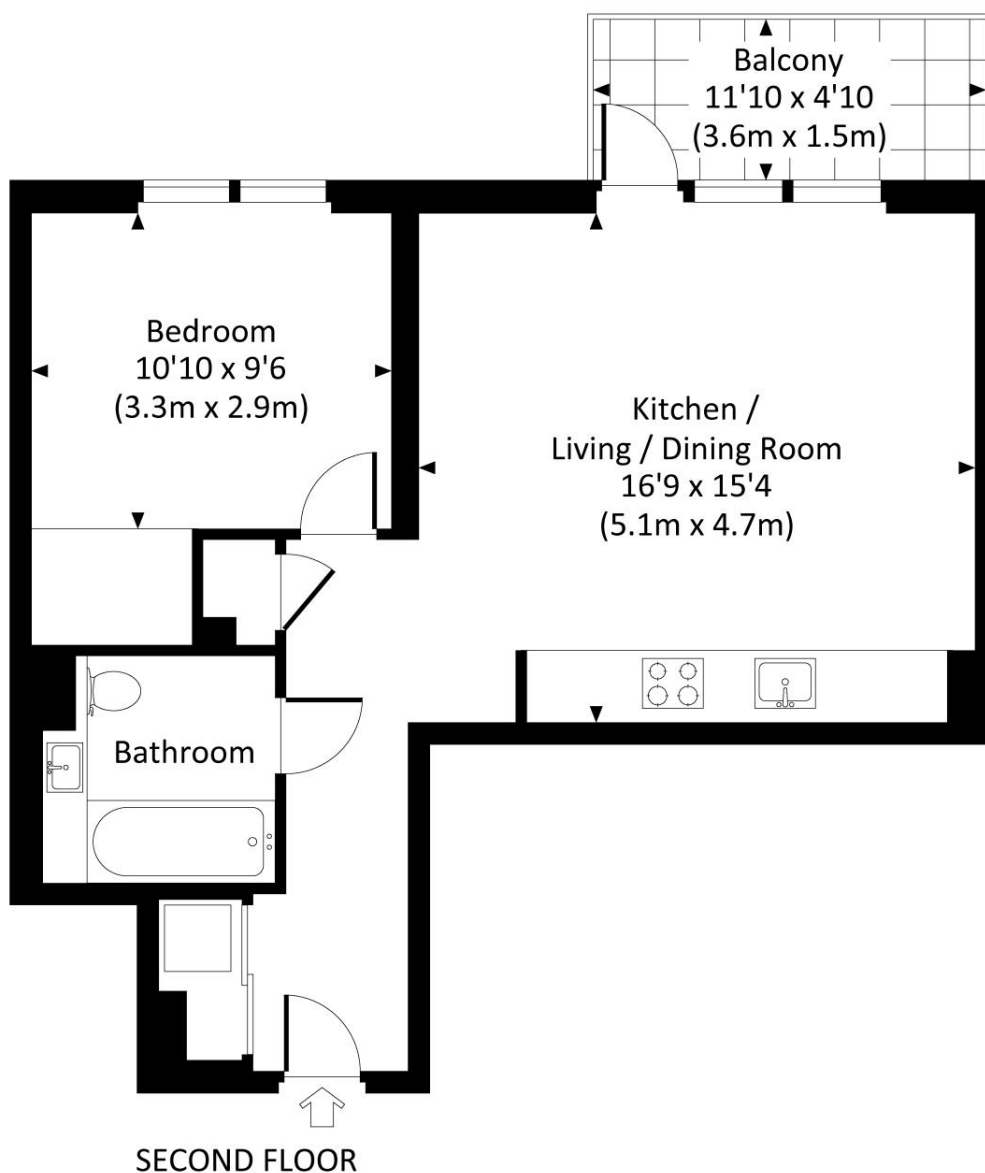
- 1 bed, 1 bath
- Private balcony
- 24 Hour concierge
- Gym, swimming pool, cinema
- Approx 544 sq ft (50 sq m)
- Furnished
- EPC: B
- Council tax: Band E
- Deposit amount: £3,250 (estimate) and an initial holding deposit of 1 week's rent is payable to res

# Floorplan

544 sq ft | 51 sq m

## BOWERY APARTMENTS, W12

Approx. gross internal area  
544 Sq Ft. / 50.5 Sq M.



All measurements are approximate and for guidance and illustrative purposes only.  
Photography and Floor Plans by [www.rayco.london](http://www.rayco.london) - +44 7793 974 209

Kensington  
387 Kensington High Street,  
London W14 8QA  
+4420 7087 5696  
[lettingskensington@eu.jll.com](mailto:lettingskensington@eu.jll.com)

*Urban living, your way.*

[jll.co.uk/residential](http://jll.co.uk/residential)

© 2019 Jones Lang LaSalle IP, Inc. All rights reserved. All information contained herein is from sources deemed reliable; however, no representation or warranty is made to the accuracy thereof.

