



Wedgewood Mews, London SW6

Guide price £2,075,000 Freehold







Description

Introducing this charming freehold end of terrace house located within Wedgewood Mews, a modern gated development in SW6. The property situated over 3 floors and comprises of 4 bedrooms, 3 bathrooms (2 en-suite), a guest WC and large open plan kitchen/living room with direct access to the large private garden. The area offers great access to public transport, with several underground stations nearby. Residents can enjoy local amenities including shops, restaurants, and green spaces such as Parsons Green and Bishop's Park. The location combines a quiet residential feel with the conveniences of city living.

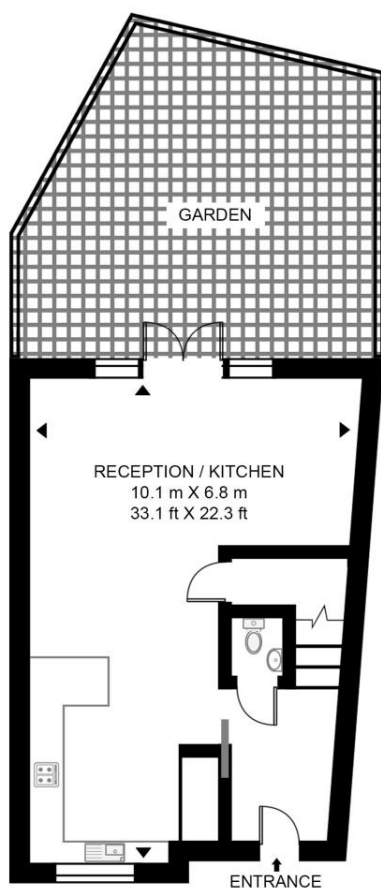
Service charge is £2,800 pa with an extra £420 pa for parking, Council tax band: H

- Freehold Mews House
- 4 Double bedrooms
- 3 Bathrooms plus guest WC
- Private garden
- Off-street parking
- Approx 1836 sq. ft (170.6 sq. m)
- EPC B

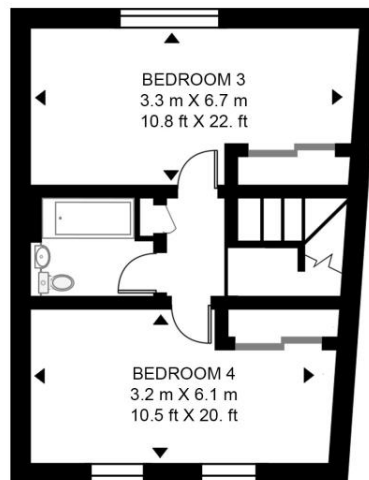
Floorplan

1,836 sq ft | 171 sq m

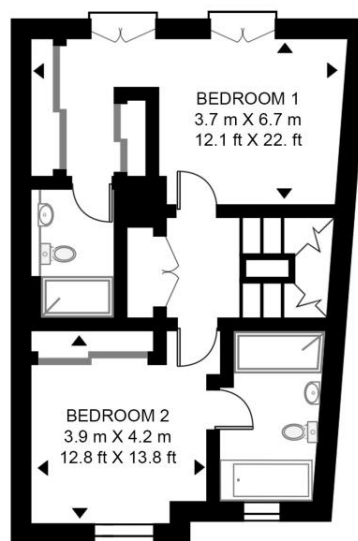
WEDGEWOOD MEWS, 86 FULHAM HIGH STREET
APPROXIMATE GROSS INTERNAL FLOOR AREA 1836 SQ.FT (170.6 SQ.M)



GROUND FLOOR



SECOND FLOOR



FIRST FLOOR



This floor plan has been defined by the RICS Code of Measurement. This floor plan and all others are for approximate representative purposes only and upon usage is agreed to as such by the client.
WWW: hdvirtualart.com | TEL: 0203.974.1567 | EMAIL: info@hdvirtualart.com

Kensington
387 Kensington High Street,
London W14 8QA
+4420 7087 5696
lettingskensington@eu.jll.com

Urban living, your way.

jll.co.uk/residential

© 2019 Jones Lang LaSalle IP, Inc. All rights reserved. All information contained herein is from sources deemed reliable; however, no representation or warranty is made to the accuracy thereof.

