



North End House, London W14

Asking price £1,150,000 Leasehold







Description

A beautiful 3 bedroom apartment nestled on the 7th floor of a prestigious gated development, 530 yards from West Kensington station. This sophisticated home harmoniously combines contemporary comfort with classic charm in one of London's most coveted neighbourhoods. As you step inside, you're greeted by a spacious hallway, so generous in size that it's currently utilized as a welcoming dining area. Warm wooden flooring flows throughout the home, complemented by stylish sash windows that add character. The large kitchen is perfect for entertaining while cooking but also there is a separate living room with its lovely 7th-floor views. All 3 bedrooms feature integrated storage spaces, ensuring ample room for belongings. A well-appointed bathroom and dedicated shower room complete the living space. Residents enjoy a peaceful and secure environment, complemented by thoughtful concierge service and well-maintained outdoor spaces. The lovely tree-lined Fitzjames Avenue boasts convenient proximity to excellent schools, the amenities of High Street Kensington and Hammersmith, and the upcoming (2025) Olympia London Exhibition Centre, which is just a short walk away and poised to revitalize the neighbourhood. With easy access to West Kensington, Barons Court, and Kensington Olympia stations, this location ensures seamless connectivity to Heathrow and the rest of London.

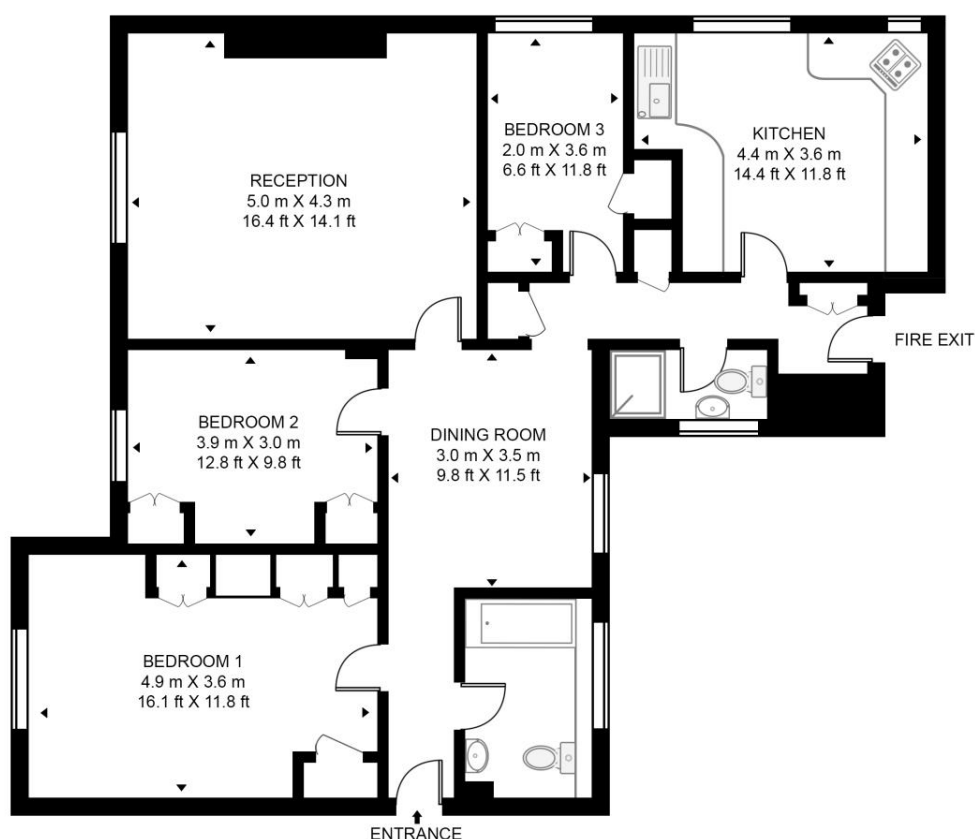
- Secure gated development
- 3 Bedrooms
- 2 Bathrooms
- 24Hr porter
- Expansive well-maintained communal gardens
- Car parking available in development £55-£65/month
- West Kensington station within 530 yards
- Short walk to the upcoming Olympia London Exhibition Centre
- Approx 1200 sq ft / 111 sq m
- EPC D

Floorplan

1,200 sq ft | 112 sq m

NORTH END HOUSE, FITZ-JAMES AVENUE

APPROXIMATE GROSS INTERNAL FLOOR AREA 1200 SQ.FT (111 SQ.M)



SEVENTH FLOOR



This floor plan has been defined by the RICS Code of Measurement. This floor plan and all others are for approximate representative purposes only and upon usage is agreed to as such by the client.

WWW: hdvirtualart.com | TEL: 0203.974.1567 | EMAIL: info@hdvirtualart.com

Kensington
387 Kensington High Street,
London W14 8QA
+4420 7087 5696
lettingskensington@eu.jll.com

Urban living, your way.

jll.co.uk/residential

© 2019 Jones Lang LaSalle IP, Inc. All rights reserved. All information contained herein is from sources deemed reliable; however, no representation or warranty is made to the accuracy thereof.

