



Fountain Park Way, London W12

Asking price £800,000 Leasehold







Description

Nestled in the heart of White City Living a superb 1 bedroom apartment situated on the 3rd floor, this property is ideally located just 0.2 miles from both White City and Wood Lane stations, ensuring easy access to the city's vibrant amenities. Upon entering the apartment, there is a handy room to your left providing practical storage, while the hallway leads you into an inviting open-plan kitchen and reception area. This expansive living space seamlessly connects to a delightful private balcony, perfect for enjoying a morning coffee or evening relaxation while overlooking the beautifully landscaped gardens.

The spacious double bedroom features an elegant walk-in wardrobe, conveniently accessible from both the bedroom and the hallway. A sophisticated bathroom adjoins the dressing area, completing the suite.

The property further benefits from air conditioning, underfloor heating, an air ventilation system, while residents enjoy 24-hour security, concierge service, CCTV surveillance, elevator access, a resident's lounge, meeting room, luxurious swimming pool, spa facilities, on-site gym, and a high-specification cineplex.

With its prime location, smart layout, and desirable amenities, this apartment presents an exceptional opportunity for those seeking a contemporary urban lifestyle in one of London's most

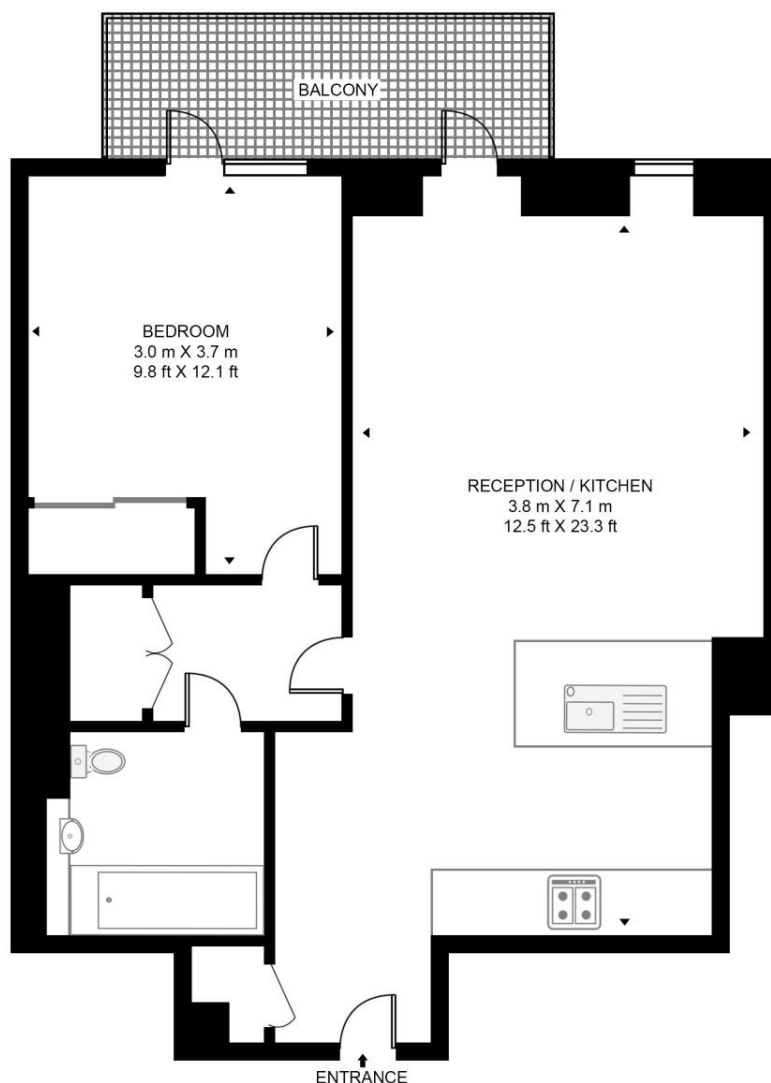
- White City Living
- 1 Double bedroom
- 1 Bathroom
- Private Balcony
- Luxury resident facilities
- White City and Wood Lane stations are within 0.2 miles
- Approx 548 sq ft / 50.9 sq m
- EPC B

Floorplan

548 sq ft | 51 sq m

BELVEDERE ROW, WHITE CITY LIVING

APPROXIMATE GROSS INTERNAL FLOOR AREA 548 SQ.FT (50.9 SQ.M)



THIRD FLOOR



This floor plan has been defined by the RICS Code of Measurement. This floor plan and all others are for approximate representative purposes only and upon usage is agreed to as such by the client.

WWW: hdvirtualart.com | TEL: 0203.974.1567 | EMAIL: info@hdvirtualart.com

Kensington
387 Kensington High Street,
London W14 8QA
+4420 7087 5696
lettingskensington@eu.jll.com

Urban living, your way.

jll.co.uk/residential

© 2019 Jones Lang LaSalle IP, Inc. All rights reserved. All information contained herein is from sources deemed reliable; however, no representation or warranty is made to the accuracy thereof.

