

**Kensington High Street, London W14**  
Price £850 per week - Furnished







## Description

A stunning two bedroom flat with balcony situated on the second floor of a private secure block with concierge.

The property is a short walk away from Kensington Olympia Station and is close to the restaurants, shops and bars situated on Kensington High Street.

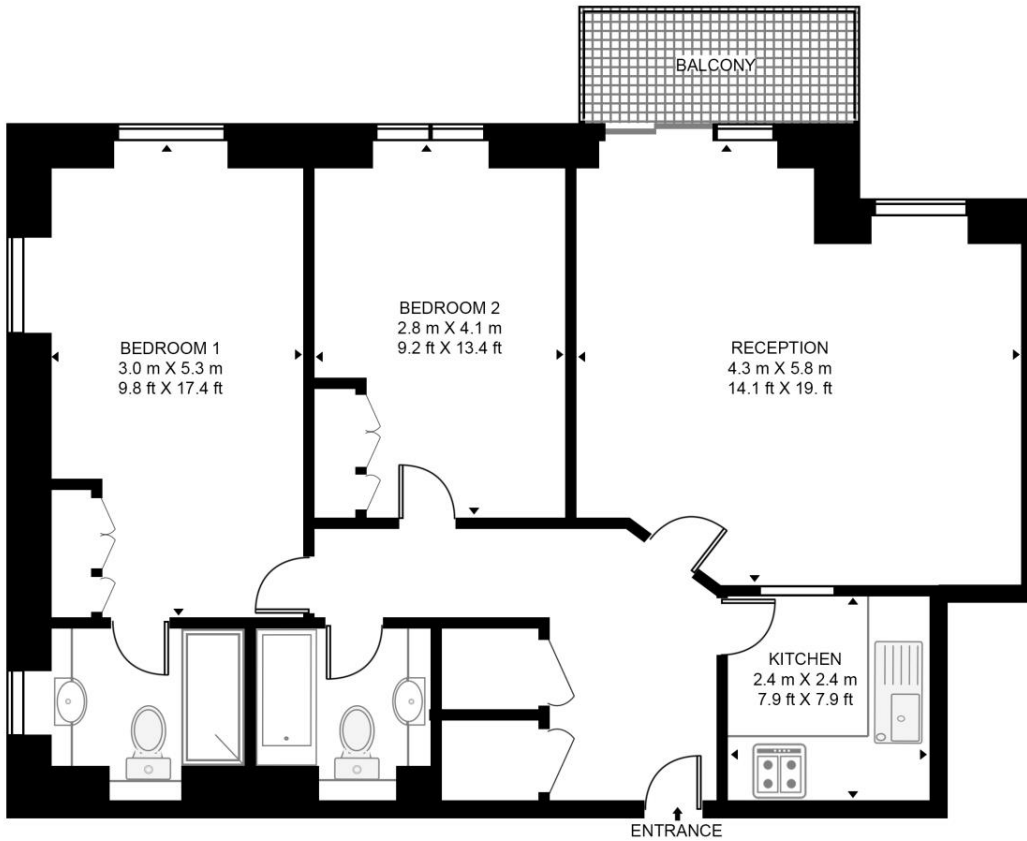
Rent is payable on a monthly basis and you may be required to pay more than a month's rent in advance, depending on your circumstances. You will be required to pay a 1 week holding deposit following a successful offer. Utility bills, council tax, telephone line and broadband are not included in the rent. As well as paying the rent, you may also be required to make some additional permitted payments. If your tenancy does not qualify as an AST, additional fees may apply. Please visit [jll.co.uk/fees](http://jll.co.uk/fees) for details of fees which may be payable when renting a property.

- 2 bedrooms
- 2 bathrooms
- Balcony
- Concierge
- EPC: TBC
- Council tax: Band G
- Deposit amount: £4,250 (estimate) and an initial holding deposit of 1 week's rent is payable to rese

# Floorplan

852 sq ft | 79 sq m

**TOLLARD HOUSE, 388 KENSINGTON HIGH STREET**  
APPROXIMATE GROSS INTERNAL FLOOR AREA 852 SQ.FT (79.2 SQ.M)



SECOND FLOOR



This floor plan has been defined by the RICS Code of Measurement. This floor plan and all others are for approximate representative purposes only and upon usage is agreed to as such by the client.  
WWW: [hdvirtualart.com](http://hdvirtualart.com) | TEL: 0203.974.1567 | EMAIL: [info@hdvirtualart.com](mailto:info@hdvirtualart.com)

Kensington  
387 Kensington High Street,  
London W14 8QA  
+4420 7087 5696  
[lettingskensington@eu.jll.com](mailto:lettingskensington@eu.jll.com)

*Urban living, your way.*

[jll.co.uk/residential](http://jll.co.uk/residential)

© 2019 Jones Lang LaSalle IP, Inc. All rights reserved. All information contained herein is from sources deemed reliable; however, no representation or warranty is made to the accuracy thereof.

