

Merchant Square East, London W2

Asking price £1,380,000 Leasehold







Description

Nestled near the picturesque Paddington Basin, this 4th floor apartment boasts a prime location in an area that seamlessly blends modern architecture with a charming waterside setting.

The open-plan kitchen/reception area is adorned with elegant wooden flooring and floor-to-ceiling South-facing windows allowing abundant natural light to flood the space, further enhancing the inviting ambiance. There are 3 tastefully decorated double bedrooms, offering ample space for relaxation and rest, and 2 sophisticated bathrooms with high-quality fixtures and fittings.

A separate storage room is also conveniently located on the basement level, providing a practical solution for storing luggage, seasonal clothing or other bulky items. This unique feature sets this flat apart, as only a select few units in the development benefit from dedicated storage spaces.

This prestigious waterside building benefits from a private underground parking space and 24/7 security and concierge service providing peace of mind to residents or guests.

- Rare Separate basement storage room included
- 3 Bedrooms
- 2 Bathrooms
- Paddington Basin
- Comfort cooling
- Paddington Station within 500 yards
- Approx 1117 sq ft / 103.7 sq m
- EPC B

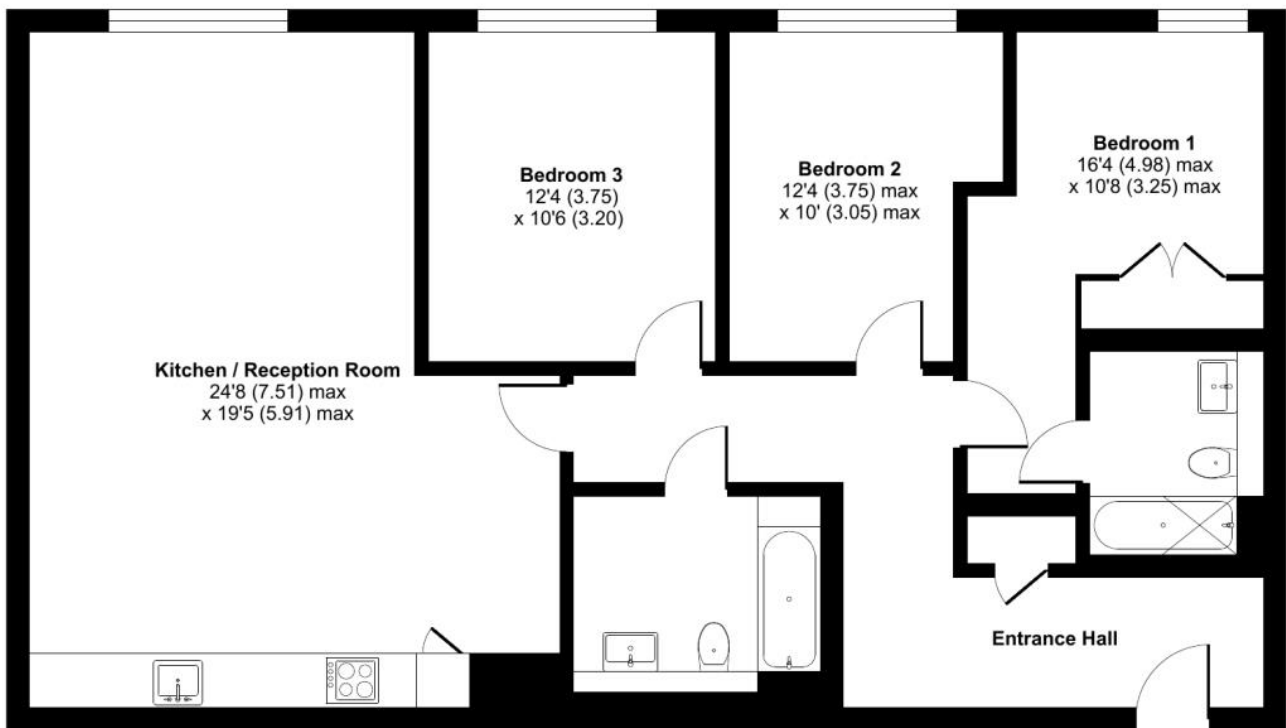
Floorplan

1,117 sq ft | 104 sq m

Merchant Square East, W2

Approximate Internal Area = 1117 sq ft / 103.7 sq m

For identification only - Not to scale



FOURTH FLOOR



Floor plan produced in accordance with RICS Property Measurement Standards incorporating International Property Measurement Standards (IPMS2 Residential). © ncthecom 2024. Produced for JLL Residential. REF: 1193996

Kensington
387 Kensington High Street,
London W14 8QA
+4420 7087 5696
lettingskensington@eu.jll.com

Urban living, your way.

jll.co.uk/residential

© 2019 Jones Lang LaSalle IP, Inc. All rights reserved. All information contained herein is from sources deemed reliable; however, no representation or warranty is made to the accuracy thereof.

