



Warwick Lane, London W14

Price £1,400 per week - Furnished







Description

A bright built 4th floor two bedroom apartment in Kensington Row, phase two of the prestigious 375 Kensington High Street development. Property comprises two double bedrooms with balconies, two bathrooms (both en-suite), storage cupboard, open plan kitchen and living room. With floor to ceiling windows leading to a private balcony, this property benefits from a lot of natural light. Other benefits include 24 hour concierge, swimming pool, gym, steam room, sauna, cinema room.

Rent is payable on a monthly basis and you may be required to pay more than a month's rent in advance, depending on your circumstances. You will be required to pay a 1 week holding deposit following a successful offer. Utility bills, council tax, telephone line and broadband are not included in the rent. As well as paying the rent, you may also be required to make some additional permitted payments. If your tenancy does not qualify as an AST, additional fees may apply. Please visit jll.co.uk/fees for details of fees which may be payable when renting a property.

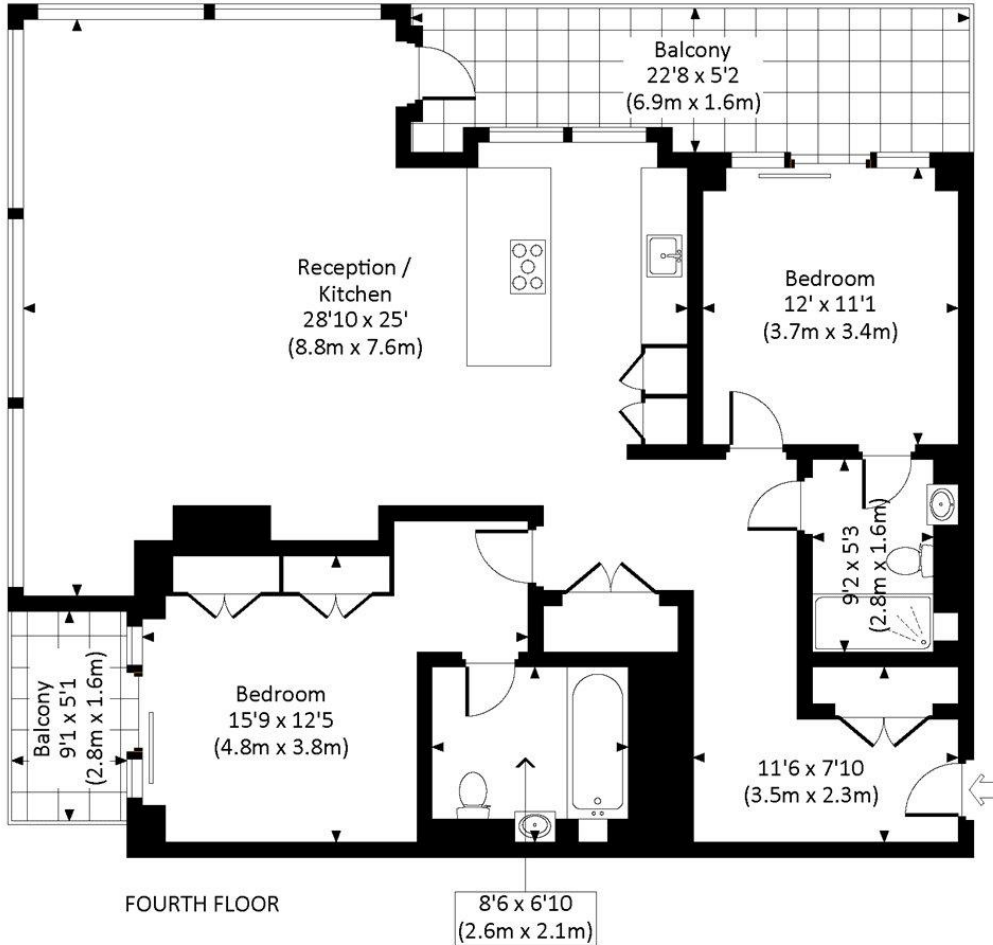
- 2 Bedrooms
- 2 Bathrooms
- 24 Hour concierge
- Gym, swimming pool, cinema
- Private balconies
- Approx 1250 sq ft (116 sq m)
- EPC: B
- Council tax: Band G
- Deposit amount: £8,400

Floorplan

1,246 sq ft | 116 sq m

THOMAS EARLE HOUSE, W14

Approx. gross internal area
1246 Sq Ft. / 115.8 Sq M.



All measurements have been made in accordance with RICS Code of Measuring Practice which are approximate only and only for illustrative purposes. For the avoidance of doubt, Dowling Jones Design shall not be liable for any reliance on these measurements. © 2018 www.dowlingjones.com 020 7610 9933

Kensington
387 Kensington High Street,
London W14 8QA
+4420 7087 5696
lettingskensington@eu.jll.com

Urban living, your way.

jll.co.uk/residential

© 2019 Jones Lang LaSalle IP, Inc. All rights reserved. All information contained herein is from sources deemed reliable; however, no representation or warranty is made to the accuracy thereof.

