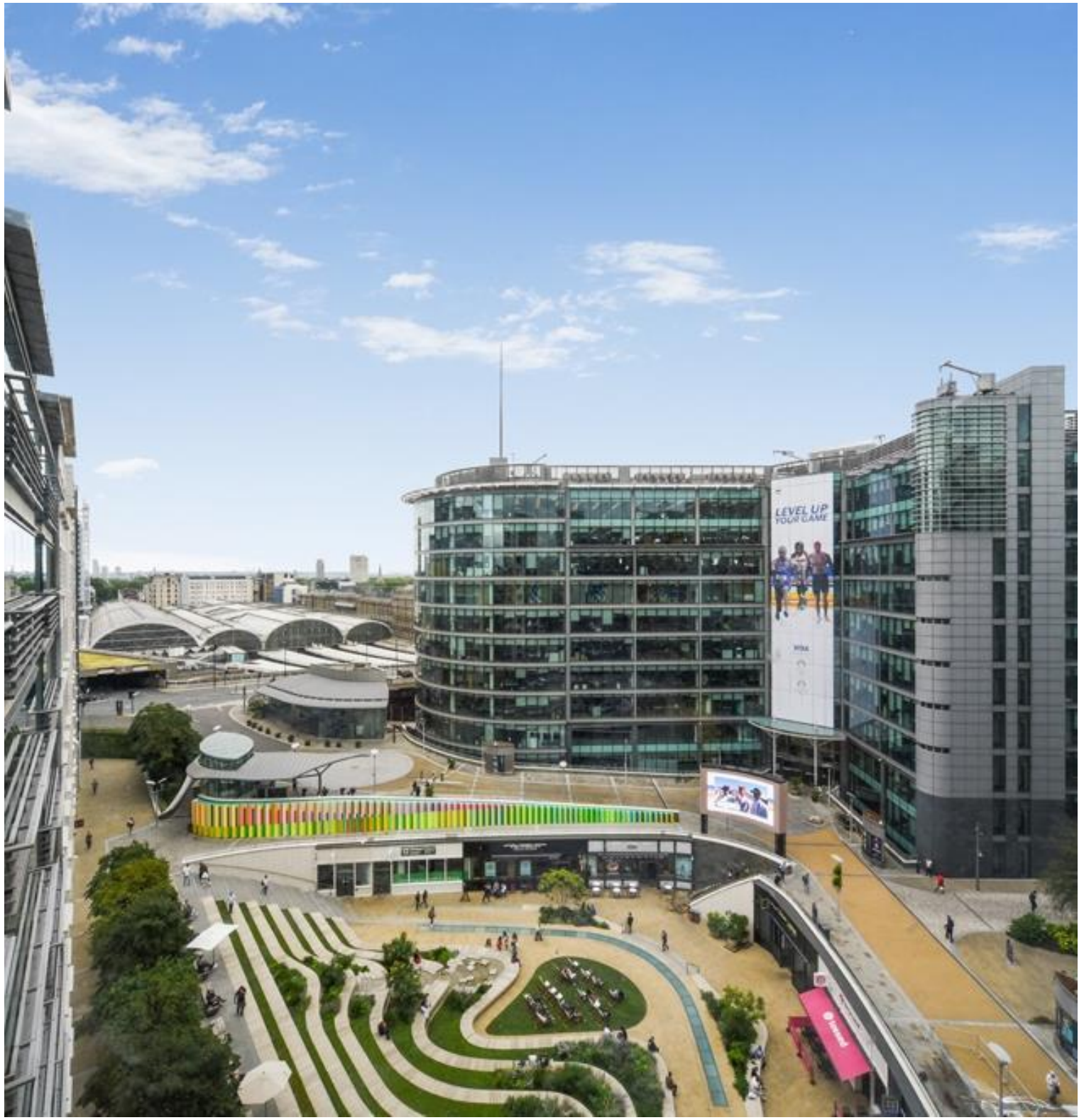




Sheldon Square, London W2

Asking price £1,000,000 Leasehold







Description

A 3 bedroom apartment that enjoys a prime location within yards from Paddington canal known for its picturesque waterfront setting, 0.2 miles to Paddington Station.

This stunning apartment with west-facing reception room providing an optional separation from the spacious and well-equipped kitchen that is complete with ample storage and modern appliances.

The main bedroom is a private retreat with its en-suite bathroom. The second bedroom offers its own charm and benefits from access to the private balcony, providing 8th floor vistas of the vibrant ambiance of the thriving locale and beautiful sunset views.

Additionally, there is a spacious third bedroom, ideal for accommodating guests or setting up a home office. A communal bathroom perfectly complements the layout of this property, providing convenience for all occupants.

With its fantastic location, fabulous views, well-designed layout, and modern amenities, this property offers a truly exceptional living experience.

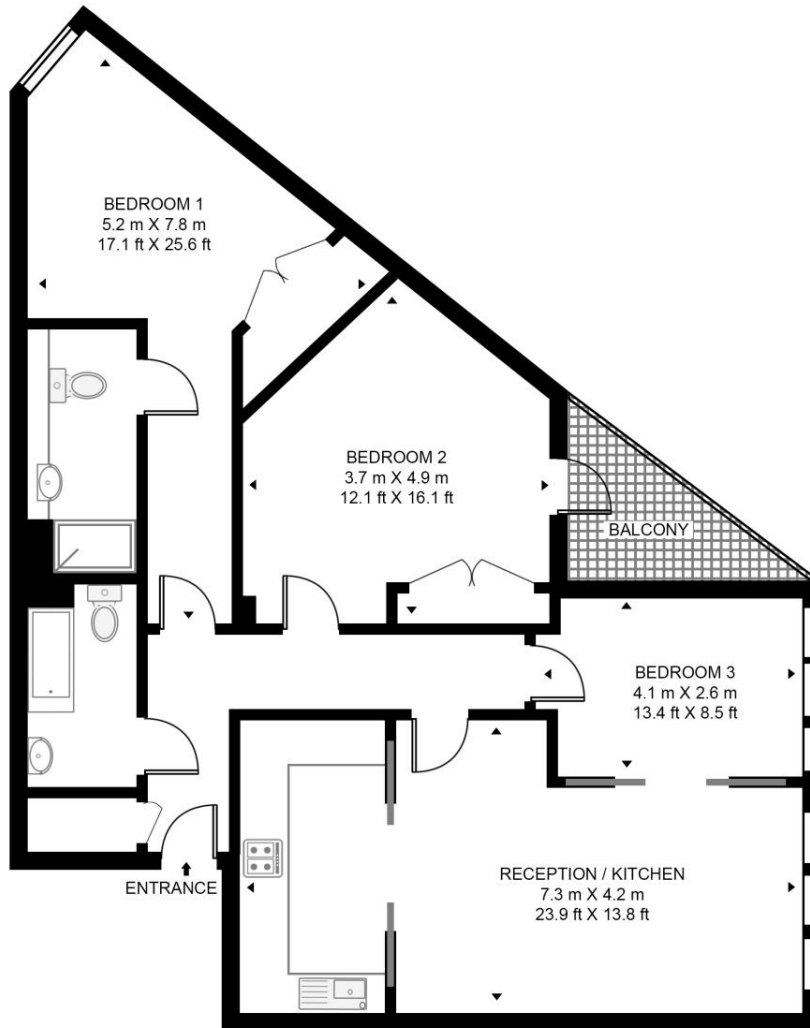
- 3 Bedrooms
- 2 Bathrooms
- Private balcony
- Fantastic views
- Within yards from Paddington canal
- 0.2 miles to Paddington Station
- Approx 929 sq ft / 86.3 sq m
- EPC D

Floorplan

929 sq ft | 86 sq m

SHELDON SQUARE

APPROXIMATE GROSS INTERNAL FLOOR AREA 929 SQ.FT (86.3 SQ.M)



EIGHTH FLOOR



This floor plan has been defined by the RICS Code of Measurement. This floor plan and all others are for approximate representative purposes only and upon usage is agreed to as such by the client.
WWW: hdvirtualart.com | TEL: 0203.974.1567 | EMAIL: info@hdvirtualart.com

Kensington
387 Kensington High Street,
London W14 8QA
+4420 7087 5696
lettingskensington@eu.jll.com

Urban living, your way.

jll.co.uk/residential

© 2019 Jones Lang LaSalle IP, Inc. All rights reserved. All information contained herein is from sources deemed reliable; however, no representation or warranty is made to the accuracy thereof.

